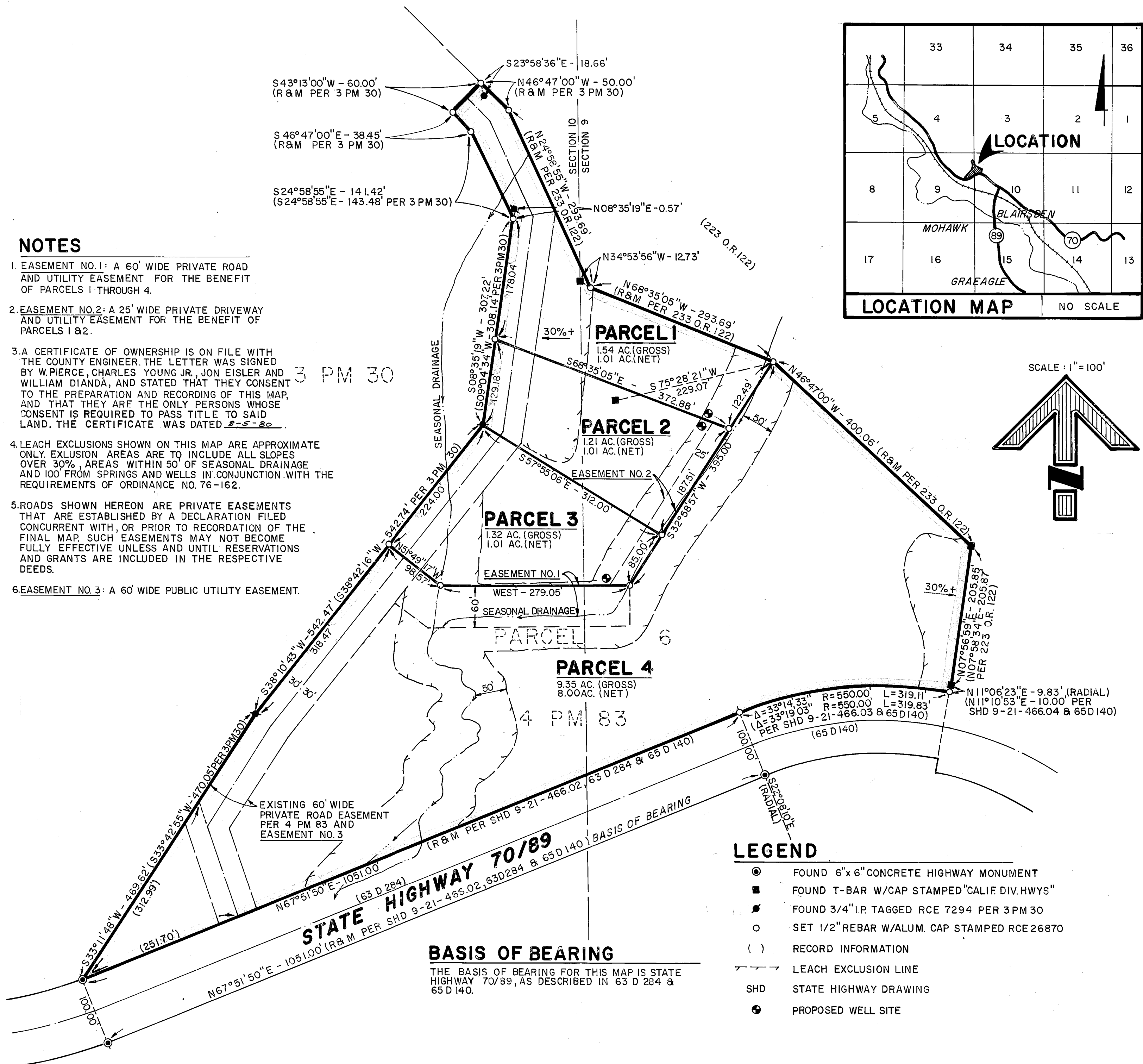


NOTES

- EASEMENT NO. 1: A 60' WIDE PRIVATE ROAD AND UTILITY EASEMENT FOR THE BENEFIT OF PARCELS 1 THROUGH 4.
- EASEMENT NO. 2: A 25' WIDE PRIVATE DRIVEWAY AND UTILITY EASEMENT FOR THE BENEFIT OF PARCELS 1 & 2.
- A CERTIFICATE OF OWNERSHIP IS ON FILE WITH THE COUNTY ENGINEER. THE LETTER WAS SIGNED BY W. PIERCE, CHARLES YOUNG JR., JON EISLER AND WILLIAM DIANDA, AND STATED THAT THEY CONSENT TO THE PREPARATION AND RECORDING OF THIS MAP, AND THAT THEY ARE THE ONLY PERSONS WHOSE CONSENT IS REQUIRED TO PASS TITLE TO SAID LAND. THE CERTIFICATE WAS DATED 8-5-80.
- LEACH EXCLUSIONS SHOWN ON THIS MAP ARE APPROXIMATE ONLY. EXCLUSION AREAS ARE TO INCLUDE ALL SLOPES OVER 30%, AREAS WITHIN 50' OF SEASONAL DRAINAGE AND 100' FROM SPRINGS AND WELLS IN CONJUNCTION WITH THE REQUIREMENTS OF ORDINANCE NO. 76-162.
- ROADS SHOWN HEREON ARE PRIVATE EASEMENTS THAT ARE ESTABLISHED BY A DECLARATION FILED CONCURRENT WITH, OR PRIOR TO RECORDATION OF THE FINAL MAP. SUCH EASEMENTS MAY NOT BECOME FULLY EFFECTIVE UNLESS AND UNTIL RESERVATIONS AND GRANTS ARE INCLUDED IN THE RESPECTIVE DEEDS.
- EASEMENT NO. 3: A 60' WIDE PUBLIC UTILITY EASEMENT.



ENGINEER'S CERTIFICATE

THIS MAP WAS PREPARED BY ME OR UNDER MY DIRECTION AND IS BASED UPON A FIELD SURVEY IN CONFORMANCE WITH THE REQUIREMENTS OF THE SUBDIVISION MAP ACT AND LOCAL ORDINANCE AT THE REQUEST OF PAUL CAREY IN OCTOBER, 1979. I HEREBY STATE THAT THE PARCEL MAP PROCEDURES OF THE LOCAL AGENCY HAVE BEEN COMPLIED WITH AND THAT THIS PARCEL MAP CONFORMS TO THE APPROVED TENTATIVE MAP AND THE CONDITIONS OF APPROVAL THEREOF WHICH WERE REQUIRED TO BE FULFILLED PRIOR TO THE FILING OF THE PARCEL MAP.

Joseph G. Brandt
JOSEPH G. BRANDT R.C.E. 26870

COUNTY SURVEYOR'S CERTIFICATE

THIS MAP CONFORMS WITH THE REQUIREMENTS OF THE SUBDIVISION MAP ACT AND LOCAL ORDINANCE.

8-11-80
DATED *Lawrence J. Brock*
LAWRENCE J. BROCK RCE 13528
PLUMAS COUNTY SURVEYOR

COUNTY TAX COLLECTOR'S CERTIFICATE

I, LOIS ALEXANDER, TAX COLLECTOR OF THE COUNTY OF PLUMAS, STATE OF CALIFORNIA, DO HEREBY CERTIFY THAT THERE ARE NO TAX LIENS AGAINST THE PARCELS, AS SHOWN HEREON, FOR UNPAID COUNTY, MUNICIPAL, OR LOCAL TAXES OR SPECIAL ASSESSMENTS COLLECTED AS TAXES, EXCEPT TAXES OR ASSESSMENTS NOT YET PAYABLE. TAXES OR ASSESSMENTS WHICH ARE A LIEN BUT NOT YET PAYABLE ARE ESTIMATED TO BE IN THE AMOUNT OF \$ 840.00.

DATED 8/11/80
Lois Alexander
LOIS ALEXANDER
PLUMAS COUNTY TAX COLLECTOR

COUNTY RECORDER'S CERTIFICATE

FILED THIS 11th DAY OF August, 1980, AT 11:05 A.M.
IN BOOK 7 OF PARCEL MAPS AT PAGE 83, AT THE REQUEST OF THE COUNTY ENGINEER.

ILA DIGGS
COUNTY RECORDER
BY *Francis Nicol*
DEPUTY

PARCEL MAP

OF
A SUBDIVISION OF FOUR PARCELS

WITHIN
THE NE 1/4 OF SEC. 9 & THE NW 1/4 OF SEC. 10
T22N, R12E MDM

PLUMAS COUNTY, CALIFORNIA

FOR

PAUL CAREY, ET AL

brandt & associates

CIVIL ENGINEERS~SURVEYORS

75 COURT STREET
QUINCY, CALIFORNIA 95971

P.O. BOX 749
916-283-1111

W.O. No. 790304

DATE: OCT., 1979
SHEET 1 OF 1