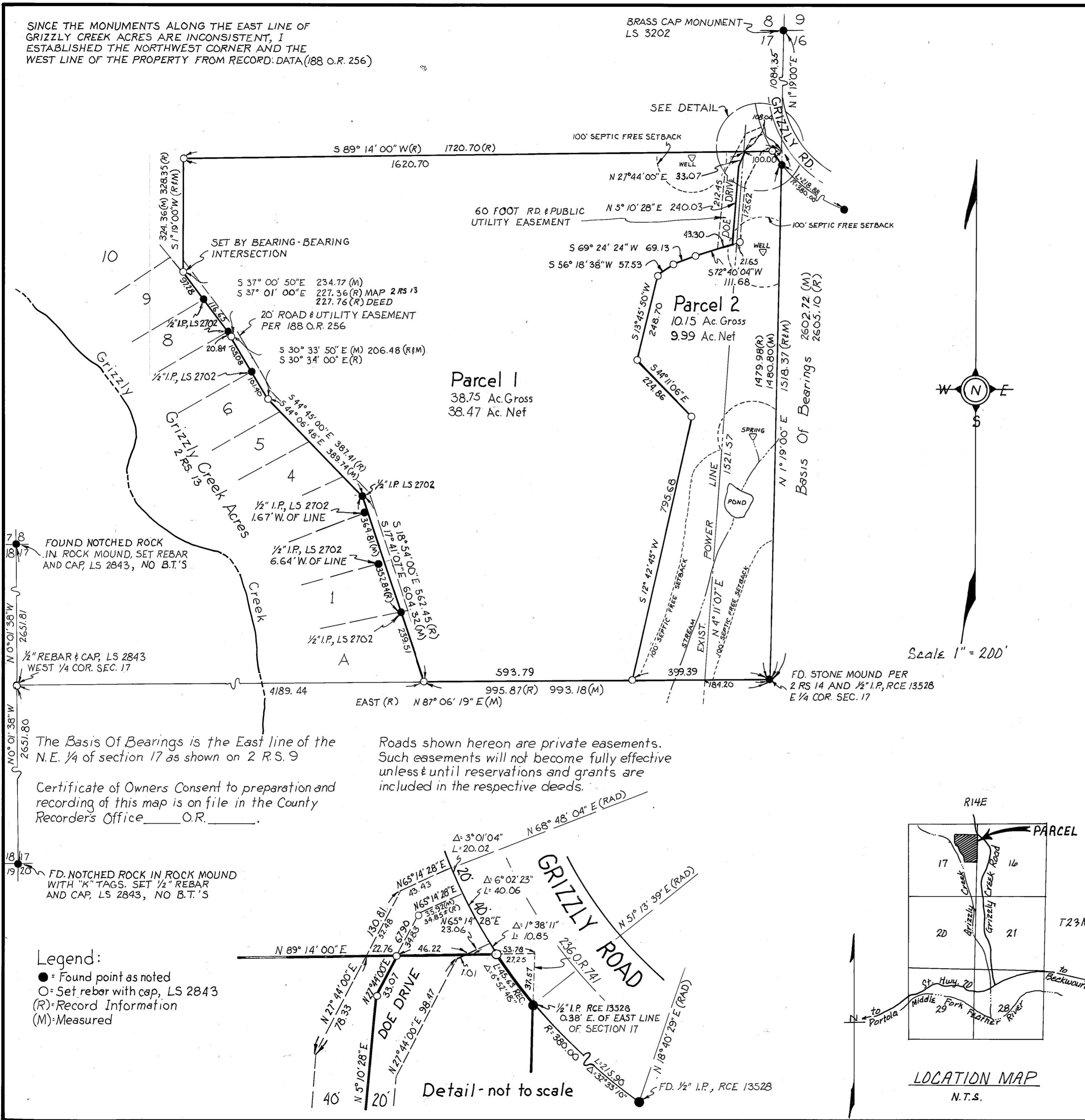


SINCE THE MONUMENTS ALONG THE EAST LINE OF GRIZZLY CREEK ACRES ARE INCONSISTENT, I ESTABLISHED THE NORTHWEST CORNER AND THE WEST LINE OF THE PROPERTY FROM RECORD DATA (188 O.R. 256)

BRASS CAP MONUMENT LS 3202



SURVEYOR'S CERTIFICATE

This Map was prepared by me or under my direction and is based upon a field survey in conformance with the requirements of the Subdivision Map Act and Local Ordinance at the request of Herman E. Russell on 5/12/80. I hereby state that the parcel map procedures of the local agency have been complied with and that this parcel map conforms to the approved tentative map and the conditions of approval thereof which were required to be fulfilled prior to the filing of the parcel map.

John W. Hamby
John W. Hamby LS 2843

COUNTY SURVEYOR'S CERTIFICATE

This Map conforms with the requirements of the Subdivision Map Act and local ordinances.

Lawrence J. Brock
Lawrence J. Brock RCE 13528
Plumas County Surveyor

Dated: May 22, 1981

COUNTY TAX COLLECTOR'S CERTIFICATE

I, Lois Alexander, Tax Collector of the County of Plumas, State of California, do hereby certify that there are no tax liens against the parcels as shown hereon for un-paid county, municipal, or local taxes, or special assessments collected as taxes, except taxes or assessments not yet payable. Taxes or assessments which are a lien but not yet payable are estimated to be in the amount of \$ 1,841.00

Dated: 5-20-81

Barbara J. Coker
Barbara J. Coker
Plumas County Tax Collector

COUNTY RECORDER'S CERTIFICATE

Filed this 22 day of May, 1981, at 2:25 P.M. in Book 8 of Parcel Maps at Page 9 at the request of the County Engineer.

Fee \$ 5.00

File No. 8591

Ila Diggs
County Recorder

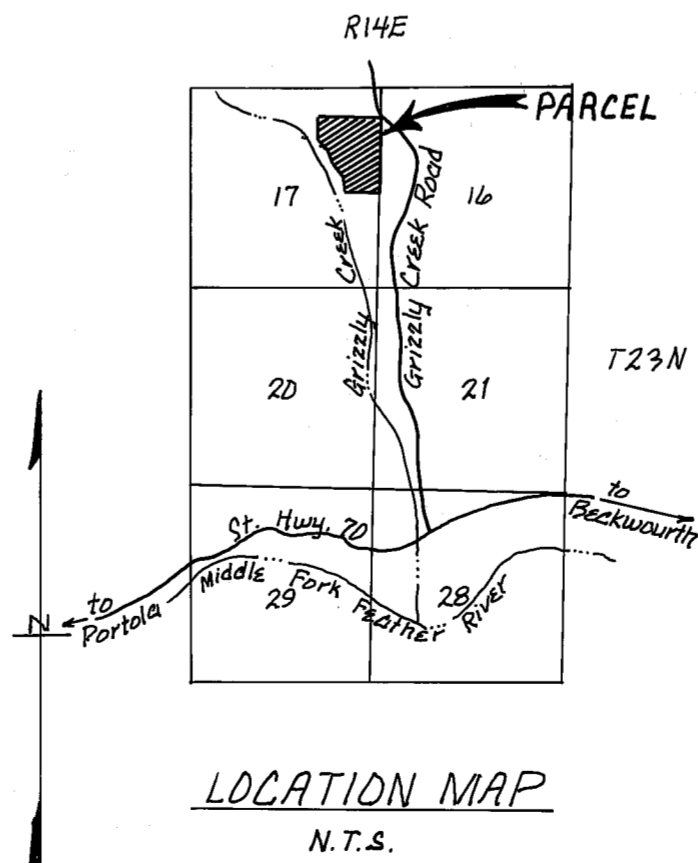
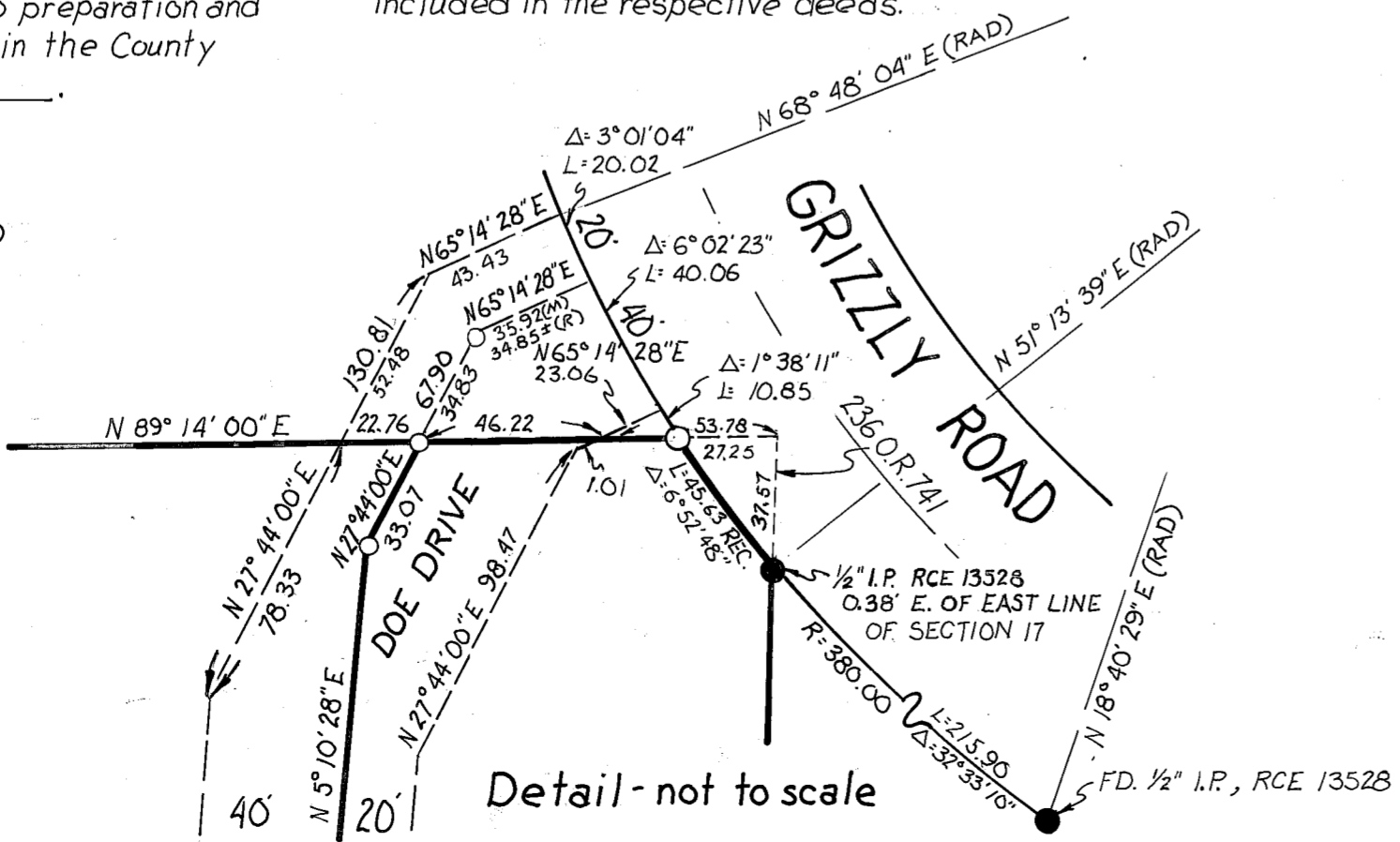
By *Frances P. Nicol*
Deputy

The Basis Of Bearings is the East line of the N.E. 1/4 of section 17 as shown on 2 R.S. 9

Certificate of Owners Consent to preparation and recording of this map is on file in the County Recorder's Office O.R. _____

Roads shown hereon are private easements. Such easements will not become fully effective unless & until reservations and grants are included in the respective deeds.

- Legend:
- = Found point as noted
- = Set rebar with cap, LS 2843
- (R) = Record Information
- (M) = Measured



Parcel Map for Herman E. Russell Et. Ux.

Being a Portion of the NE 1/4 of Section 17, T.23N., R.14E., M.D.B. & M. Plumas County, California

Prepared by: John W. Hamby LS 2843
Licensed Land Surveyor
P.O. Box 842 Ph. 832-5571
Portola, California, 96122

August, 1980