

A Division of Parcel 1 per 5PM99  
 Certificate of Owner's Consent to preparation and recording of this map is on file in the County Engineer's Office, Plumas County Dated Sept. 6, 1980.

Roads shown hereon are private easements. Such easements will not fully become effective unless until reservations & grants are included in the respective deeds.

Basis of Bearings: The North Line of Parcel 1 shown as N89°32'20"W per 5PM99, Plumas County Records.

SURVEYOR'S CERTIFICATE

This Map was prepared by me or under my direction (and was compiled from record data) and is based upon a field survey in conformance with the requirements of the Subdivision Map Act and Local Ordinances at the request of Peter & Sandra Schmid on 9/12/79. I hereby state that the parcel map procedures of the local agency have been complied with and that this parcel map conforms to the approved tentative map and the conditions of approval thereof which were required to be fulfilled prior to the filing of the parcel map.

*John W. Hamby*  
 John W. Hamby L.S. 2843

COUNTY SURVEYOR'S CERTIFICATE

This Map conforms with the requirements of the Subdivision Map Act and Local Ordinance.

Dated: May 28 1981

*Lawrence J. Brock*  
 Lawrence J. Brock R.C.E. 13528  
 Plumas County Surveyor

COUNTY TAX COLLECTOR'S CERTIFICATE

I, Lois Alexander, Tax Collector of the County of Plumas, State of California, do hereby certify that there are no tax liens against the parcels, as shown hereon, for un-paid county, municipal, or local taxes or special assessments collected as taxes, except taxes or assessments not yet payable. Taxes or assessments which are a lien, but not yet payable, are estimated to be in the amount of \$ 447.00

Dated: 4-23-81

*Lois Alexander By Barbara Colton*  
 Lois Alexander  
 Plumas County Tax Collector Deputy

COUNTY RECORDER'S CERTIFICATE

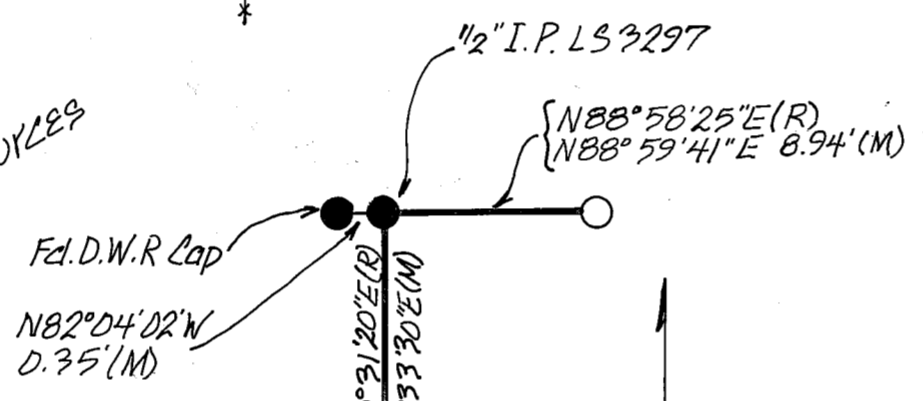
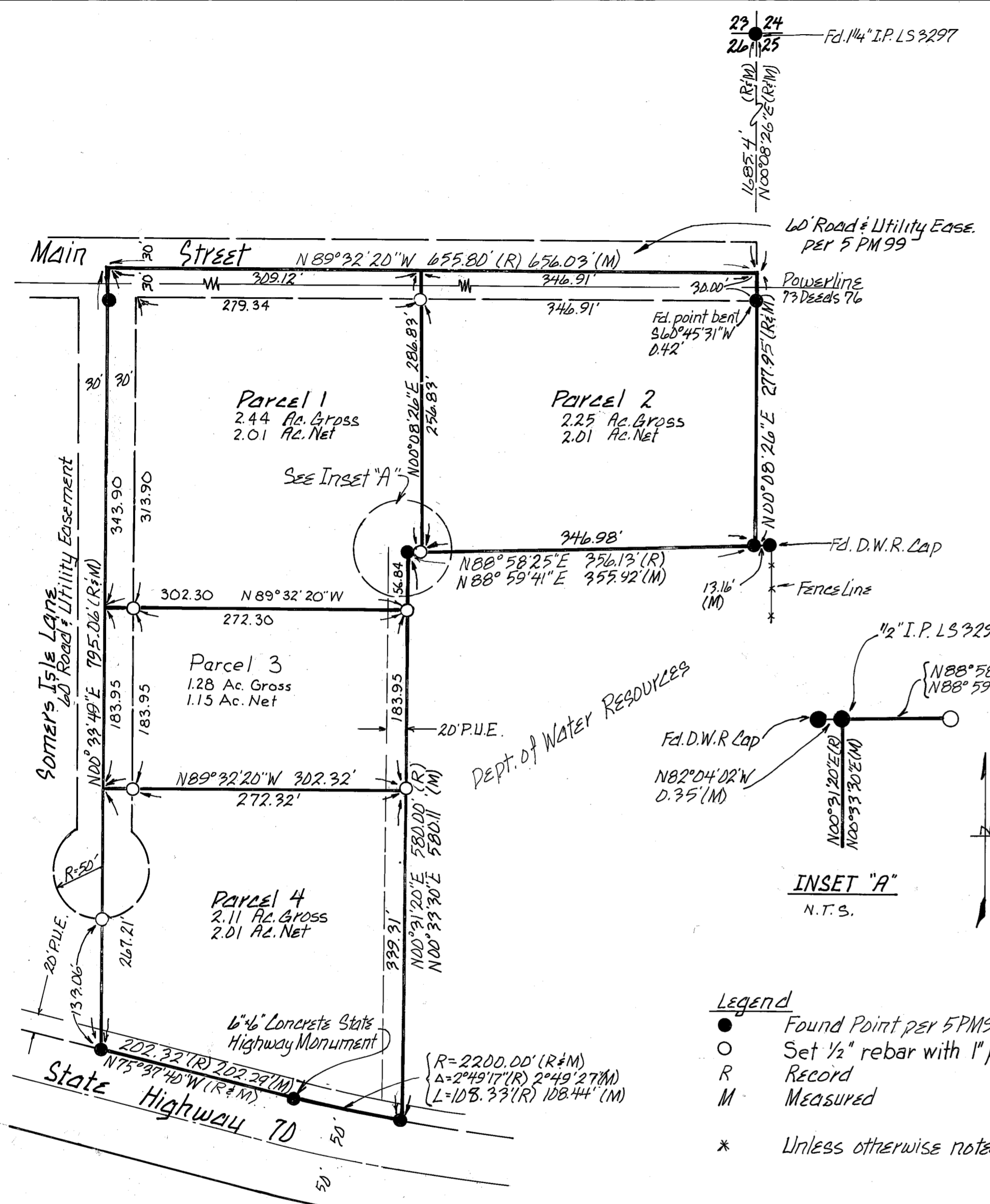
Filed this 28 day of May, 1981 at 4:25 P.M. in Book 8 of Parcel Maps, at Page 14, at the request of the County Engineer

Fee \$ 5.00

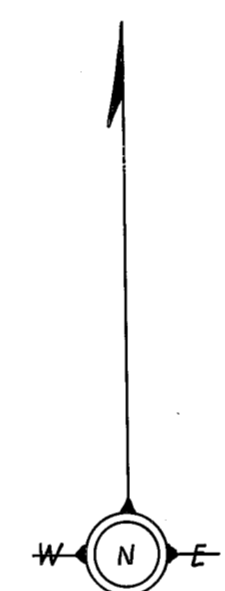
Ila Diggs  
 County Recorder

File No. 8772

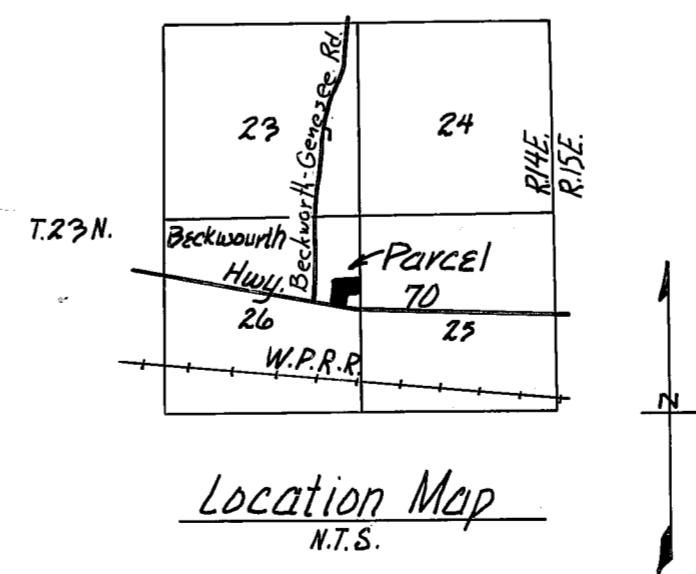
By: *Frances Nicol*  
 Deputy



- Legend
- Found Point per 5PM99, 1/2" I.P. Tagged LS 3297\*
  - Set 1/2" rebar with 1" plastic cap, LS 2843
  - R Record
  - M Measured
  - \* Unless otherwise noted



Scale 1" = 100'



Parcel Map  
 for  
 Peter & Sandra Schmid

Being a Portion of the SE 1/4 of the NE 1/4 of Section 26  
 T.23 N. R.14 E. M.D.B.#M.  
 Plumas County, California  
 December of 1979

Prepared by:  
 John W. Hamby L.S. 2843  
 Licensed Land Surveyor  
 P.O. Box 842 Ph. (916) 832-5571  
 Portola, California

Sheet 1 of 1