

Surveyor's Certificate

This map was prepared by me or under my direction, and is based upon a field survey in conformance with the requirements of the Subdivision Map Act and local ordinances at the request of Kenneth Pearson on Aug. 4, 1981. I hereby state that the parcel map procedures of the local agency have been complied with and that this parcel map conforms to the approved tentative map and the conditions of approval thereof which were required to be fulfilled prior to the filing of the parcel map.

John W. Hamby
John W. Hamby L.S. 2843

County Surveyor's Certificate

This map conforms with the requirements of the Subdivision Map Act and local ordinances.

Dated: 12-3-81

Lawrence J. Brock
Lawrence J. Brock R.C.E. 13528
Plumas County Surveyor

County Tax Collector's Certificate

I, Barbara J. Cokor, Tax Collector of the County of Plumas, State of California, do hereby certify that there are no tax liens against the parcels as shown hereon for unpaid county, municipal or local taxes or special assessments collected as taxes except taxes or assessments not yet payable. Taxes or assessments which are a lien but not yet payable are estimated to be in the amount of NONE.

Dated: Dec. 3, 1981

Barbara J. Cokor
Barbara J. Cokor
Plumas County Tax Collector

County Recorder's Certificate

Filed this 3rd day of DECEMBER, 1981, at 4:25 P.M. in Book B of Parcel Maps at Page 51 at the request of the County Engineer.

Fee \$5.00
File No. 810031

ILA DIGGS
County Recorder
by *Frances Nicol*
Deputy

PARCEL MAP
FOR

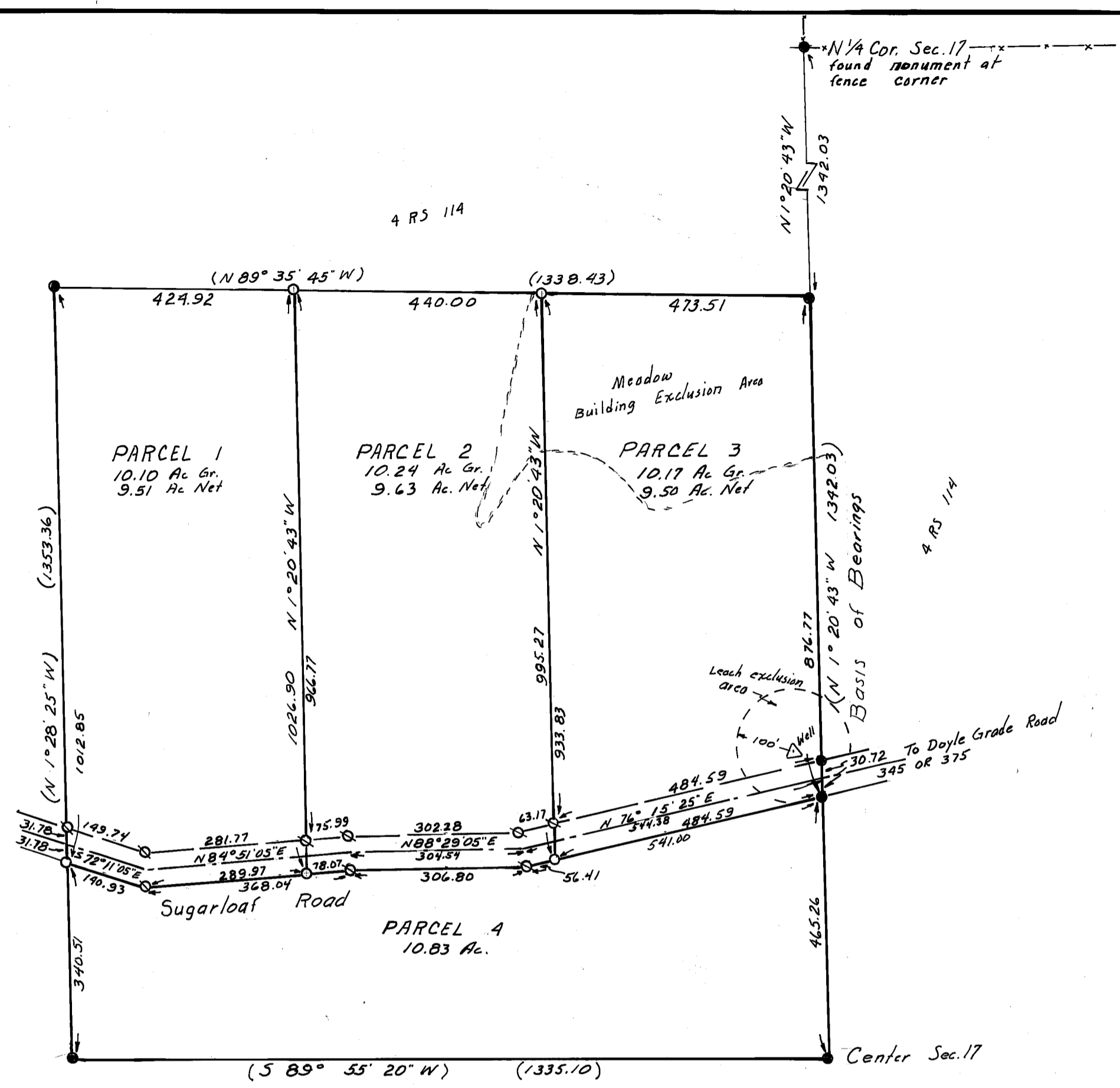
KENNETH PEARSON, WESLEY HARDY AND BOBBI HARDY

THE SE 1/4 OF THE NW 1/4 OF SECTION 17, T25N R16E, MDB&M.
PLUMAS COUNTY CALIFORNIA

HAMBY SURVEYING, INC.
P.O. BOX 842,
PORTOLA, CALIF 96122
PH. 916-832-5571

OCTOBER, 1981

SHEET 1 OF 1



Scale = 1" = 200'

U. S. A.

The BASIS OF BEARINGS is the west line of the N.E. 1/4 of Section 17, shown as N1°20'43"W on 4 R.S. 114.

No authorized structural fire protection is provided to the parcels shown hereon.

NOTES:

Certificate of owner's consent to preparation and recording of this map is on file in the County Recorders Office in 361 O.R. 577

Leach exclusion areas are all areas within 50' of property lines, within easements, within 50' of watercourses and all areas over 30% slope, and within 100' of wells.

Roads shown hereon are private easements. Such easements will not become fully effective unless and until reservations and grants are included in the respective deeds. Said private roads are not subject to County improvements or maintenance. It will be required that such roads be improved to County Standards at no cost to the County before such roads may be accepted into the County Road System.

LEGEND:

- Found rebar with aluminum cap, L.S. 2843.
- Set rebar with aluminum cap, L.S. 2843.
- ⊗ Set rebar with plastic cap, L.S. 2843.
- () Indicates record and measured data.

