

**NOTES**

Certificate of owners consent to preparation and recording of this map is on file in the County Recorders Office in Book 364 O.R. 27

Leach exclusion areas are all areas within 50 feet of property lines, within easements, within 50 feet of watercourses, within 100 feet of wells and all areas over 30% slope.

Archeological sites are designated hereon as a dotted line boundary and labeled as CA-PLU-363 and CA-PLU-364. These sites are building and excavation exclusion areas. Ground disturbance, other than agricultural activity, within these areas must be approved in writing by a professional archaeologist prior to any excavation.

Roads shown hereon as easements are private easements. Such easements will not become fully effective unless and until reservations and grants are included in the respective deeds. Said private roads are not subject to County improvements or maintenance. It will be required that such roads be improved to County Standards at no cost to the County before such roads may be accepted into the County Road System.

This map is a division of Parcel 4 of 7 P.M. II.

The basis of bearings is the north line of Section 26, as shown on 7 P.M. II.

**LEGEND**

● Indicates found rebar with aluminum cap marked L.S.2843

**SURVEYOR'S CERTIFICATE**

This map was prepared by me or under my direction and was compiled from record data in conformance with the requirements of the Subdivision Map Act and local ordinances at the request of Kenneth Gilmer on June 23, 1981. I hereby state that the parcel map procedures of the local agency have been complied with and that this parcel map conforms to the approved tentative map and the conditions of approval thereof which were required to be fulfilled prior to the filing of the parcel map.

*John W. Hamby*  
John W. Hamby L.S. 2843

**COUNTY SURVEYOR'S CERTIFICATE**

This map conforms with the requirements of the Subdivision Map Act and local ordinances.

Dated Jan 21, 1982

*Lawrence J. Brock*  
Lawrence J. Brock RCE 13528  
Plumas County Surveyor

**COUNTY TAX COLLECTOR'S CERTIFICATE**

I, Barbara J. Cokor, Tax Collector of the County of Plumas, State of California, do hereby certify that there are no tax liens against the parcels as shown hereon for unpaid county, municipal or local taxes or special assessments collected as taxes except taxes or assessments not yet payable. Taxes or assessments which are a lien but not yet payable are estimated to be in the amount of NONE.

Dated: 1-21-82

*Barbara J. Cokor*  
Barbara J. Cokor  
Plumas County Tax Collector

**COUNTY RECORDER'S CERTIFICATE**

Filed this 21<sup>st</sup> day of January, 1982, at 2:50 p.m. in Book 8 of Parcel Maps at page 63 at the request of the County Engineer.

Fee \$ 5.00  
File No. 61007

Ila Diggs  
County Recorder  
by *Frances Nicol*  
Deputy

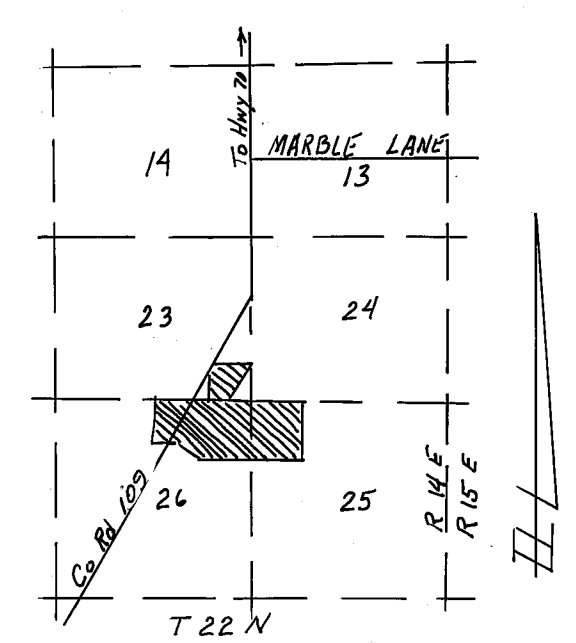
**PARCEL MAP**

AND  
PLANNED UNIT DEVELOPMENT

FOR  
KENNETH GILMER AND SHIRLEY GILMER  
BEING PORTIONS OF SECTIONS 23, 25 & 26, T22 NR14E, M.D.M.  
PLUMAS COUNTY CALIFORNIA

By:  
HAMBY SURVEYING, INC. L.S. 2843  
P.O. BOX 842  
PORTOLA CALIF. 96122

OCT. 1981



Location Map - N.T.S.

