

Surveyor's Certificate

This map was prepared by me or under my direction and is based upon a field survey in conformance with the requirements of the Subdivision Map Act and local ordinances at the request of Dieter Kleinhans on January 23, 1981. I hereby state that the parcel map procedures of the local agency have been complied with and that this parcel map conforms to the approved tentative map and the conditions of approval thereof which were required to be fulfilled prior to the filing of the parcel map.

John W. Hamby
John W. Hamby LS 2843

County Surveyor's Certificate

This map conforms with the requirements of the Subdivision Map Act and local ordinances.

Dated: 4-9-82

Lawrence J. Brock
Lawrence J. Brock-RCE 13528
Plumas County Surveyor

County Tax Collector's Certificate

I, Barbara J. Cokor, Tax Collector of the County of Plumas, State of California, do hereby certify that there are no tax liens against the parcels as shown hereon for unpaid county, municipal or local taxes or special assessments collected as taxes, except taxes or assessments not yet payable. Taxes or assessments which are a lien but not yet payable are estimated to be in the amount of \$362.00

Dated: 3/29/82

Barbara J. Cokor
Barbara J. Cokor
Plumas County Tax Collector

County Recorder's Certificate

Filed this 9 Day of April, 1982, at 1:40 p.m. in Book 8 of Parcel Maps at Page 67 at the request of the County Engineer.

Fee \$5.00
File No. 7336

Ila Diggs
County Recorder

by *Francis Nicol*
Deputy

Notes:

Certificate of Owners' Consent to preparation and recording of this map is on file in the County Recorders Office in 367 O.R. 132

Leach exclusion areas are all areas within 50' of property lines, within easements, within 50' of watercourses and for all slopes of 30% or greater.

Roads shown hereon are private easements. Such easements will not become fully effective unless and until reservations and grants are included in the respective deeds.

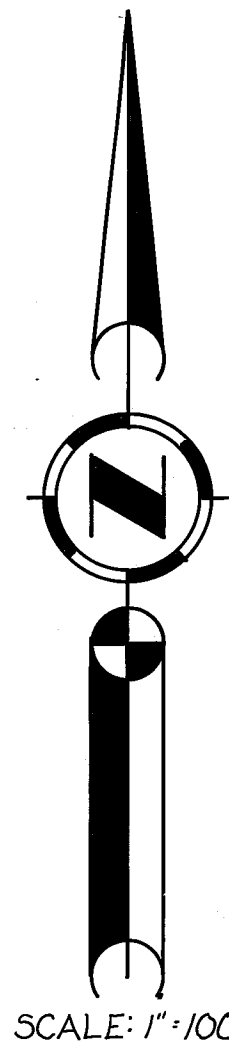
Roads shown hereon are private roads not subject to County improvements or maintenance. It will be required that such roads be improved to County Standards at no cost to the County before such roads may be accepted into the County Road System.

The Basis Of Bearings is the South line of Parcel 2, shown as S 89° 26' 58" W on the Parcel Map recorded in Book 7 of Parcel Maps at Page 113, Plumas County Records.

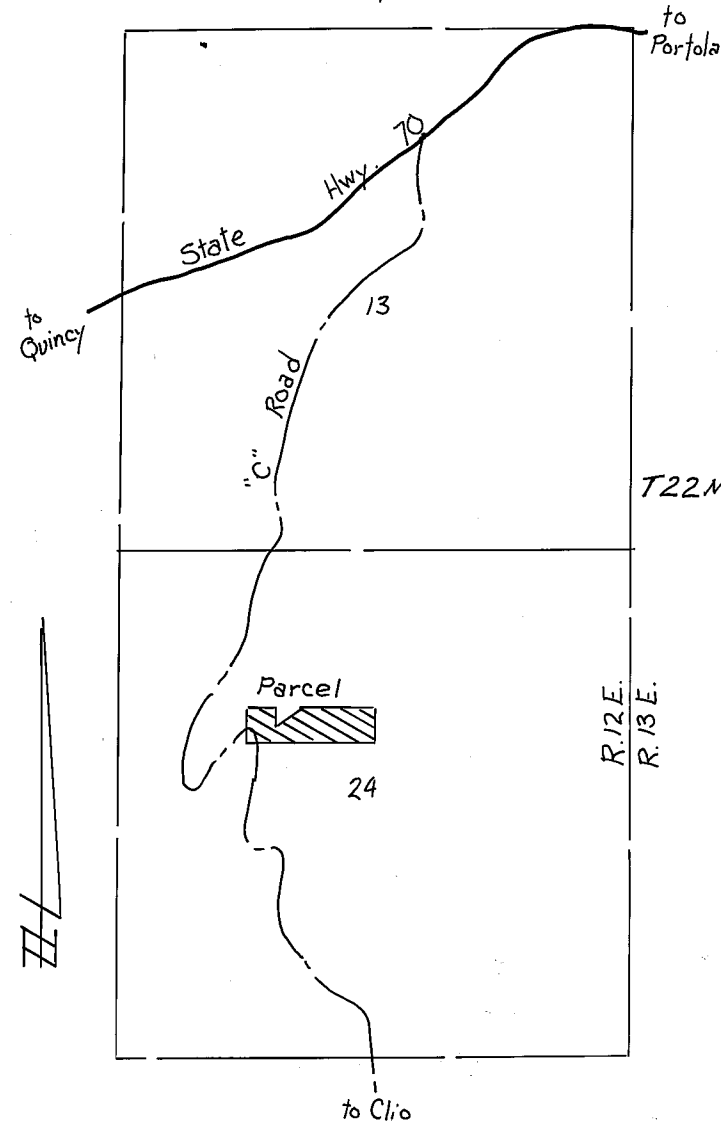
Legend:

- - Set 1/2" rebar with cap, LS 2843
- - Found 1/2" rebar with cap, LS 2843
- - Found 3/4" I.P., LS 3336
- P - Power line
- P.U.D. - Planned Unit Development

Warning: No structural fire protection is available.



Location Map - N.T.S.



PARCEL MAP & P.U.D.

for
DIETER & URSULA KLEINHANS
Of a portion of the N.W. 1/4 of Sec. 24, T.22 N. R.12 E., M.D.B#M.
Plumas County, California

By:
Hamby Surveying, Inc., LS 2843
P.O. Box 842, Ph. (916) 832 5571
Portola, California, 96122
May, 1981

Sheet 1 of 1