

**NOTES**

Parcels 1 and 2 shown hereon are a division of Parcel 8 per Book 6 of Parcel Maps at Page 111, Plumas County Records.  
 Certificate of Owner's Consent to preparation and filing of this map is on file in the County Engineers Office dated Dec 8, 1982 380 OR 215  
 The roads shown hereon are private easements not subject to improvements or maintenance by Plumas County. Such easements may not become effective unless and until reservations and grants are included in the respective deeds.  
 All lots shown hereon shall be serviced by a community sewage system.

**SURVEYOR'S CERTIFICATE**

This map was prepared by me or under my direction and is based upon a field survey in conformance with the requirements of the Subdivision Map Act and local ordinances at the request of DON BOWERS on August 23, 1982. I hereby state that this parcel map substantially conforms to the approved or conditionally approved tentative map, if any.



*John W. Hamby*  
 John W. Hamby L.S. 2843

**COUNTY SURVEYOR'S CERTIFICATE**

This map conforms with the requirements of the Subdivision Map Act and local ordinance.

Dated 13<sup>th</sup> Dec. 1982.

*Lawrence J. Brock*  
 Lawrence J. Brock R.C.E. 13528  
 Plumas County Surveyor

**RECORDER'S CERTIFICATE**

Filed this 23<sup>rd</sup> day of December, 1982, in Book 8 of Parcel Maps at Page 91 at the request of the County Engineer.

Fee # 500  
 File No. 4642

Ila Diggs  
 County Recorder  
 by *Frances Nicol*  
 Deputy

**BASIS OF BEARING**

The EAST line of Parcels 1 & 2 shown as S. 0° 33' 30" E. per Book 6 of Parcel Maps at Page 111, Plumas County Records.

**LEGEND**

- Found 1/2" rebar and 1-1/2" cap, L.S. 2843
- Set 1/2" rebar and 1-1/2" cap, L.S. 2843
- (R) Record information
- (M) Measured
- Found 1" Iron Pipe, capped, L.S. 2843

**COUNTY TAX COLLECTOR'S CERTIFICATE**

I, Barbara J. Cokor, Tax Collector of the County of Plumas, State of California, do hereby certify that there are no tax liens against the parcels as shown hereon for unpaid county, municipal, or local taxes or special assessments collected as taxes, except taxes or assessments not yet payable. Taxes or special assessments which are a lien but not yet payable are estimated to be in the amount of NONE.

Dated 12-16-82  
*Barbara J. Cokor*  
 Barbara J. Cokor  
 Plumas County Tax Collector

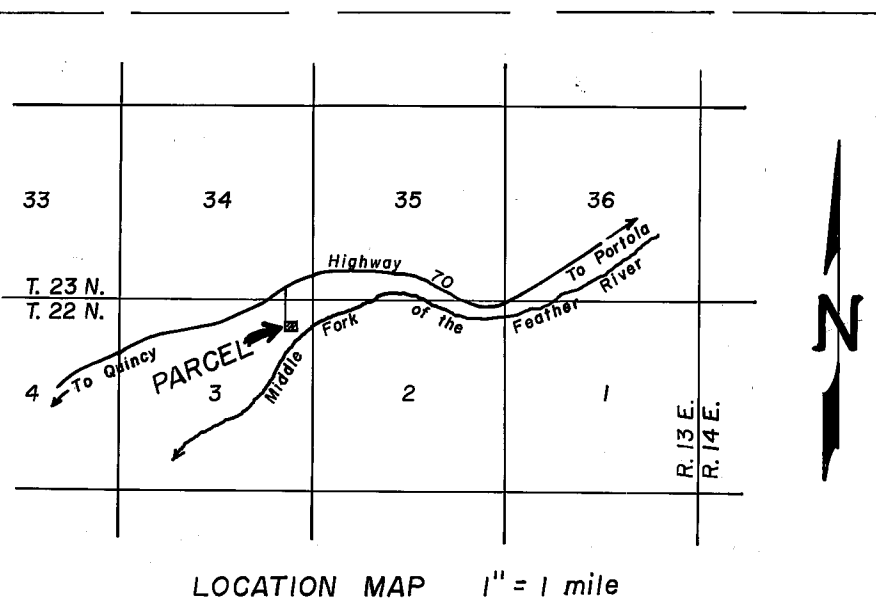
**PARCEL MAP FOR PLUMAS-SIERRA RENTALS**

A PORTION OF THE N.E. 1/4 OF SECTION 3  
 T. 22 N. R. 13 E. M.D.B. & M.  
 PLUMAS COUNTY CALIFORNIA

**HAMBY SURVEYING INC.**  
 LICENSED LAND SURVEYORS

P.O. BOX 1209 PORTOLA, CALIF. 96122  
 P.O. BOX H.H. PARADISE, CALIF. 95969  
 NOVEMBER 1982  
 SHEET 1 OF 1

INDUSTRIAL WAY  
 Existing 60' Roadway Easement



BRUNING 44-132

82037

Road Main  
 380 OR 215