

COUNTY TAX COLLECTOR'S CERTIFICATE

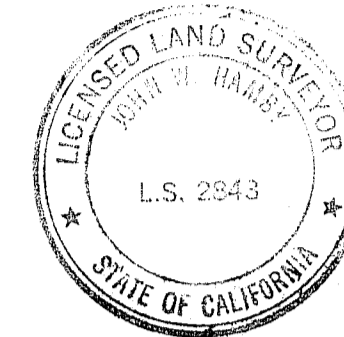
I, Barbara J. Cokor, Tax Collector of the County of Plumas, State of California, do hereby certify that there are no tax liens against the parcels as shown hereon for unpaid county, municipal, or local taxes or special assessments collected as taxes except taxes or assessments not yet payable. Taxes or special assessments which are a lien but not yet payable are estimated to be in the amount of NONE.

Dated 1/6/83

Barbara J. Cokor
Barbara J. Cokor
Plumas County Tax Collector

SURVEYOR'S CERTIFICATE

This map was prepared by me or under my direction and is based upon a field survey in conformance with the requirements of the Subdivision Map Act and local ordinances at the request of Ron Lee on September 1981. I hereby state that this parcel map substantially conforms to the approved or conditionally approved tentative map, if any.



John W. Hamby
John W. Hamby L.S. 2843

NOTES

Certificate of Owners' consent to prepare and record this map is on file in the office of the Plumas County Recorder in Book 281 of Official Records at Page 74.

Leach exclusion areas are all areas within 50' of property lines, within easements, within 50' of watercourses and all areas with slopes in excess of 30%.

Roads shown hereon are private easements and will not become fully effective unless and until reservations and grants are included in the respective deeds. Said private roads are not subject to Plumas County improvements or maintenance.

No authorized structural fire protection is provided to the parcels shown hereon.

COUNTY SURVEYOR'S CERTIFICATE

This map conforms with the requirements of the Subdivision Map Act and local ordinance.

Dated 1-4-83

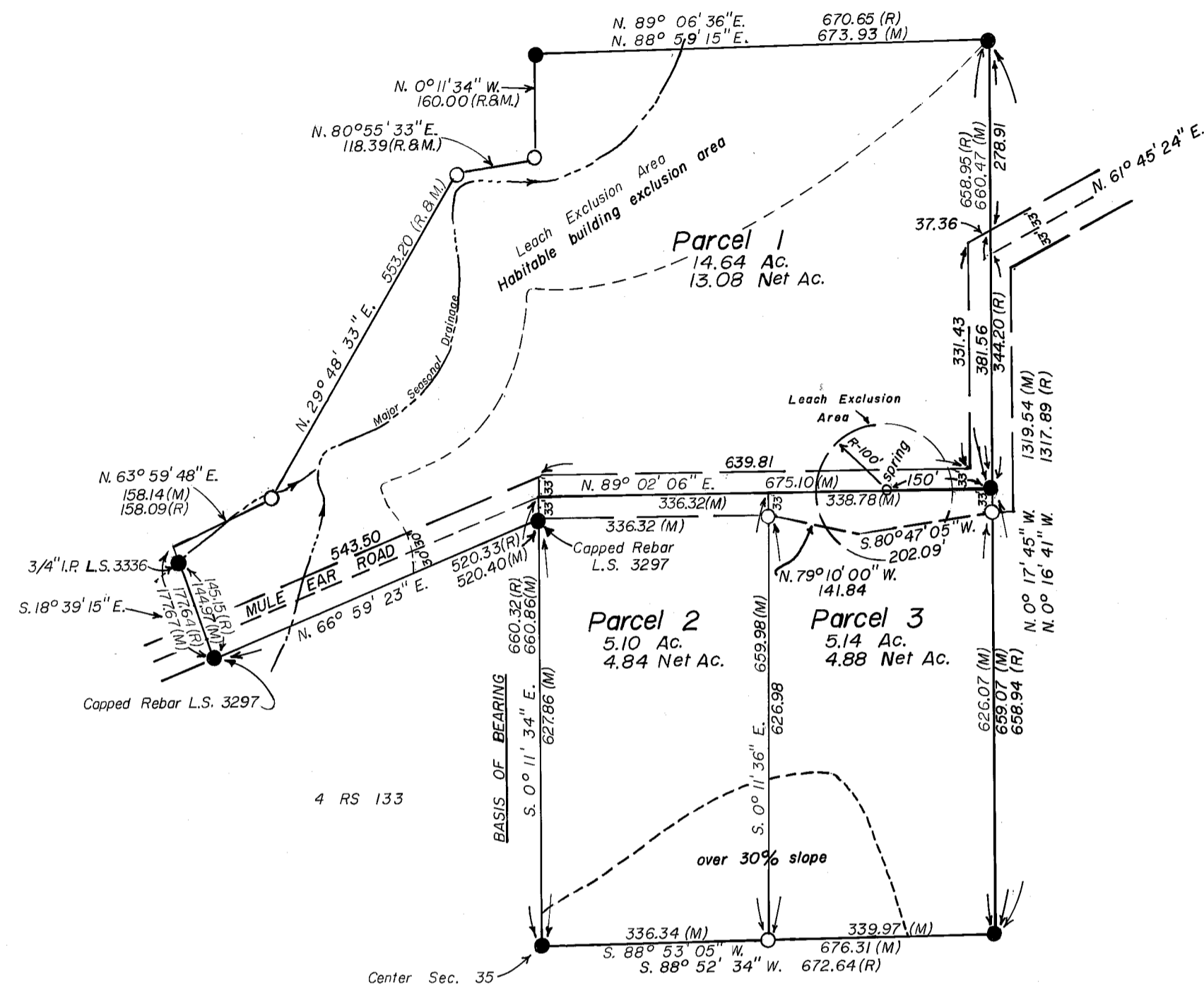
Lawrence J. Brock
Lawrence J. Brock R.C.E. 13528
County Surveyor

RECORDER'S CERTIFICATE

Filed this 6th day of January, 1982 at 10:27 AM in Book 8 of Parcel Maps at Page 92 at the request of Ron Lee County Engineer

Fee \$ 5.00
File No. 28430

Ila Diggs
Ila Diggs
County Recorder
by *Francis Nicol*
Deputy



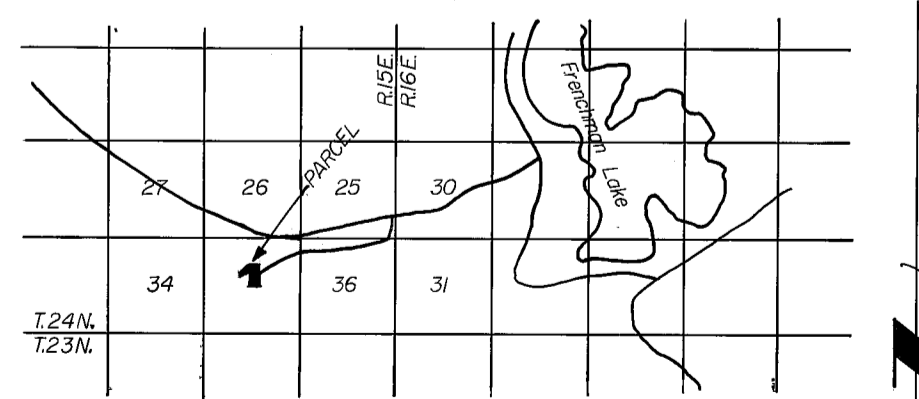
SCALE 1" = 200'

BASIS OF BEARING

The West line of Parcel 2 shown as S. 0° 11' 34" E. per 4 RS 133, Plumas County.

LEGEND:

- - FOUND 3/4" IRON PIPE L.S. 2846, OR AS NOTED
- - SET 1/2" REBAR CAPPED L.S. 2843
- (R) - RECORD DATA PER 4 RS 133
- (M) - MEASURED



LOCATION MAP

PARCEL MAP

FOR
RON LEE & MARGARET LEE
AND **RICHARD LEWIS**
OF A PORTION OF THE NORTH 1/2 OF
SEC. 35, T.24N., R.15E., M.D.B.&M.
PLUMAS COUNTY, CALIFORNIA

HAMBY SURVEYING INC.
LICENSED LAND SURVEYORS

P.O. BOX 1209 PORTOLA, CALIF. P.O. BOX H.H. PARADISE, CALIF.

AUGUST 1982
SHEET 1 OF 1