

MAP NOTES

1. EASEMENT NO. 1 IS AN EASEMENT FOR ROADWAY, PUBLIC UTILITY AND DRAINAGE CONSTRUCTION AND MAINTENANCE PURPOSES FOR THE BENEFIT OF LANDS OF MARSH AS DESCRIBED IN BOOK 233, PLUMAS COUNTY OFFICIAL RECORDS, AT PAGE 295 AND FOR THE BENEFIT OF OTHER LANDS OF SUBDIVIDER.
2. EASEMENT NO. 2 IS AN EASEMENT FOR INGRESS AND EGRESS PER 265 OR 350 AND AS SHOWN HEREON.
3. EASEMENT NO. 3 IS A TEN FOOT (10') WIDE EASEMENT FOR THE CONSTRUCTION, MAINTENANCE AND REPLACEMENT OF STORM DRAIN FACILITIES.
4. EASEMENT NO. 4 IS A PUBLIC UTILITY EASEMENT FOR THE MAINTENANCE AND REPLACEMENT OF EXISTING PUBLIC FACILITIES. EASEMENT NO. 4 ENCOMPASSES LOT A IN ITS ENTIRETY.
5. EXTERIOR PROPERTY LINES, DEFINED BY POINTS (A) (B) (C) (D) (E) (F) AND (G), HAVE BEEN ESTABLISHED BY QUIT CLAIM DEEDS, RECORDED PRIOR TO OR CONCURRENTLY WITH THIS MAP.
6. ALL BEARINGS AND DISTANCES SHOWN HEREON, BUT NOT A PART OF THE BOUNDARY OF LOT A OR A COURSE DEFINED BY POINTS (A) (B) (C) OR (D), ARE RECORD INFORMATION ONLY.
7. EASEMENT NO. 5 IS AN EASEMENT FOR THE MAINTENANCE, REPAIR AND REPLACEMENT OF A FENCE AND FOR THE CARE, MAINTENANCE AND PRESERVATION OF ANY AND ALL LIVE TREES STANDING WITHIN SAID EASEMENT FOR THE BENEFIT OF LANDS OF MARSH.

BASIS OF BEARING

BASIS OF BEARING FOR THIS SURVEY IS THE WEST LINE OF SECTION 23, TAKEN AS S00°17'30" W, AS SHOWN ON 1M 42.

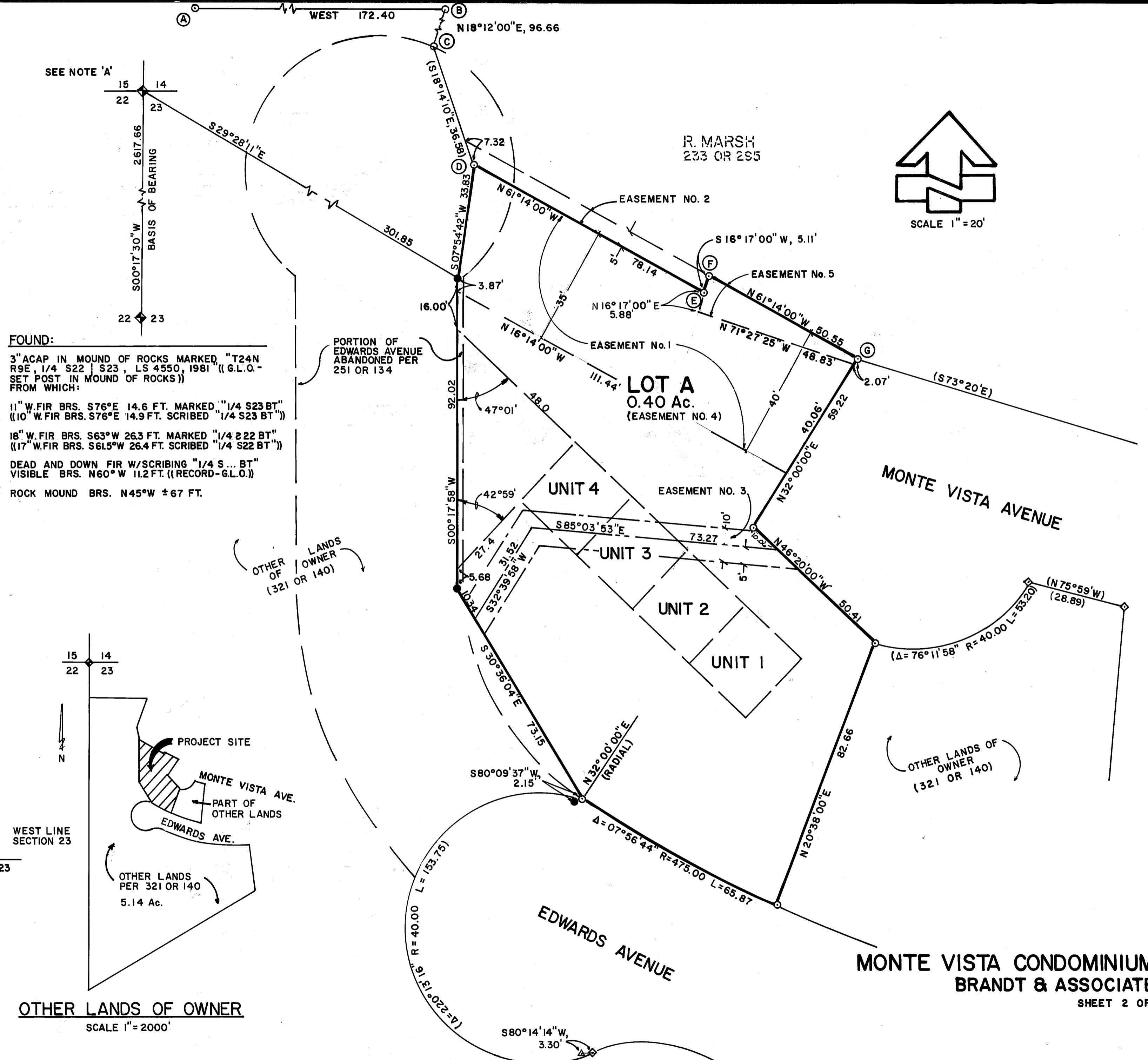
LEGEND

- ⊙ SET 1/2" REBAR WITH ALUM. CAP STAMPED RCE 26870
- FOUND 1/2" REBAR, RCE 11173 (NO RECORD)
- △ FOUND 1/2" REBAR, RCE 13528 (NO RECORD)
- ◇ CALCULATED CORNER, NOTHING SET OR FOUND
- ◆ FOUND SECTIONAL CORNER AS DESCRIBED
- () RECORD INFORMATION PER 321 OR 140 OR 1M43. SEE NOTE 6.
- (() RECORD PER 6RS 12,13, EXCEPT AS NOTED
- ACAP ALUMINUM CAP IN ALUMINUM PIPE

NOTE 'A'

FOUND 2" IRON PIPE W/ALUM. TAG MARKED "SEC. COR. 14,15,22,23 RCE 11173

((G.L.O. - SET POST IN MOUND OF ROCKS FROM WHICH:
 35" SPRUCE BRS. S68°E 171 LKS.
 32" PPINE BRS. N28.5°E 75 LKS.
 25" SPRUCE BRS. S73.5°W 36 LKS.))



FOUND:

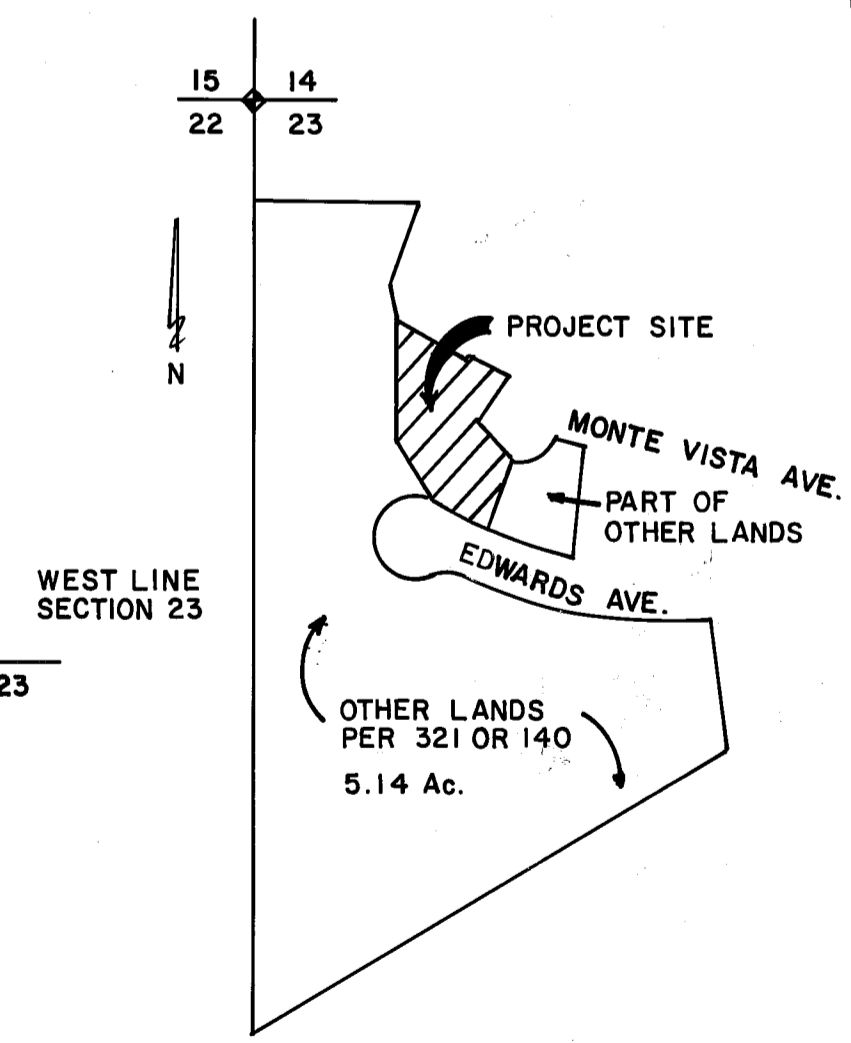
3" ACAP IN MOUND OF ROCKS MARKED "T24N R9E, 1/4 S22 1/2 S23, LS 4550, 1981 ((G.L.O. - SET POST IN MOUND OF ROCKS)) FROM WHICH:

11" W.FIR BRS. S76°E 14.6 FT. MARKED "1/4 S23 BT" ((10" W.FIR BRS. S76°E 14.9 FT. SCRIBED "1/4 S23 BT"))

18" W.FIR BRS. S63°W 26.3 FT. MARKED "1/4 S22 BT" ((17" W.FIR BRS. S61.5°W 26.4 FT. SCRIBED "1/4 S22 BT"))

DEAD AND DOWN FIR W/SCRIBING "1/4 S... BT" VISIBLE BRS. N60°W 11.2 FT. ((RECORD-G.L.O.))

ROCK MOUND BRS. N45°W ±67 FT.



MONTE VISTA CONDOMINIUMS
BRANDT & ASSOCIATES
 SHEET 2 OF 3