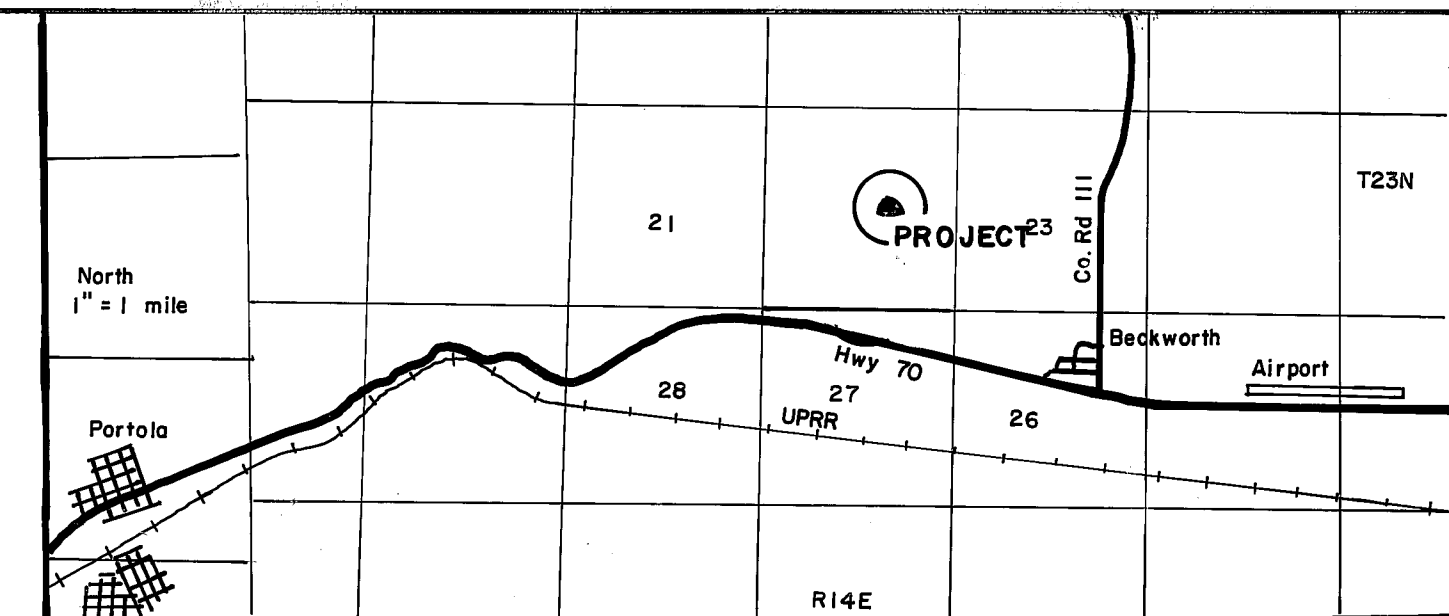


**LEGEND**

- Fd. 1/2 rebar and cap, LS 2843
- △ Calculated points
- ( ) Record per 5M29 and measured except as noted
- Set 1/2" rebar RCE 22836
- P.O.L. Point On Line
- ( ) C Calc from 5M29

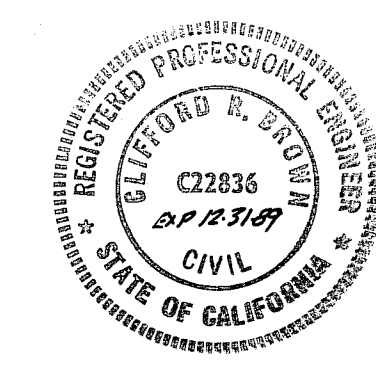
**EASEMENT DATA** per 5M29 except as noted.

Course	Delta Bearing	or Lt.	Radius		Length or Arc		
			£	Rt.	Lt.	£	Rt.
A	N3°38'53"E				122.90'	122.90'	
B	68°15'58"	430'	400'	370'	476.59'	440.84'	
C	N71°54'51"E				99.95'	99.95'	
D	48°59'46"	220'	250'	280'	213.79'		
E	(42°02'52")C					205.84'	
F	11°41'26"	290'	320'	350'	65.29'		
G	(6°11'56")C					37.87'	
H	S68°34'52"E				40.90'	40.90'	
I	69°56'19"	530'	500'	470'	646.95'	610.33'	573.71'
J	S1°21'27"W					72.41'	
K	S1°21'27"W				23.42'		23.42'
L	44°24'56"		20'			15.50'	
M	60°38'55"		50'			52.93'	



**SURVEYOR'S CERTIFICATE**

This map was prepared by me or under my direction and is based upon a field survey in conformance with the requirements of the Subdivision Map Act and Local Ordinance at the request of Vernon J. & Diane K. Kruse in Dec. 1988. All of the monuments shown hereon are of the character and occupy the positions indicated and are sufficient to enable the survey to be retraced. I hereby state that this parcel map substantially conforms to the approved or conditionally approved tentative map, if any.



*Clifford R. Brown*  
Clifford R. Brown RCE 22836

**COUNTY SURVEYOR'S CERTIFICATE**

This map conforms with the requirements of the Subdivision Map Act and Local Ordinance.

Dated 2/28/89

*Lawrence J. Brock*  
Lawrence J. Brock RCE 13528  
Plumas County Surveyor

**COUNTY TAX COLLECTOR'S CERTIFICATE**

I, Barbara J. Coates, Tax Collector of the County of Plumas, State of California, do hereby certify that there are no tax liens against the Parcels, as shown hereon, for unpaid state, county, municipal, or local taxes or special assessments collected as taxes, except taxes or assessments not yet payable. Taxes or assessments which are a lien but not yet payable, are estimated to be in the amount of NONE.

Dated 2-28-89

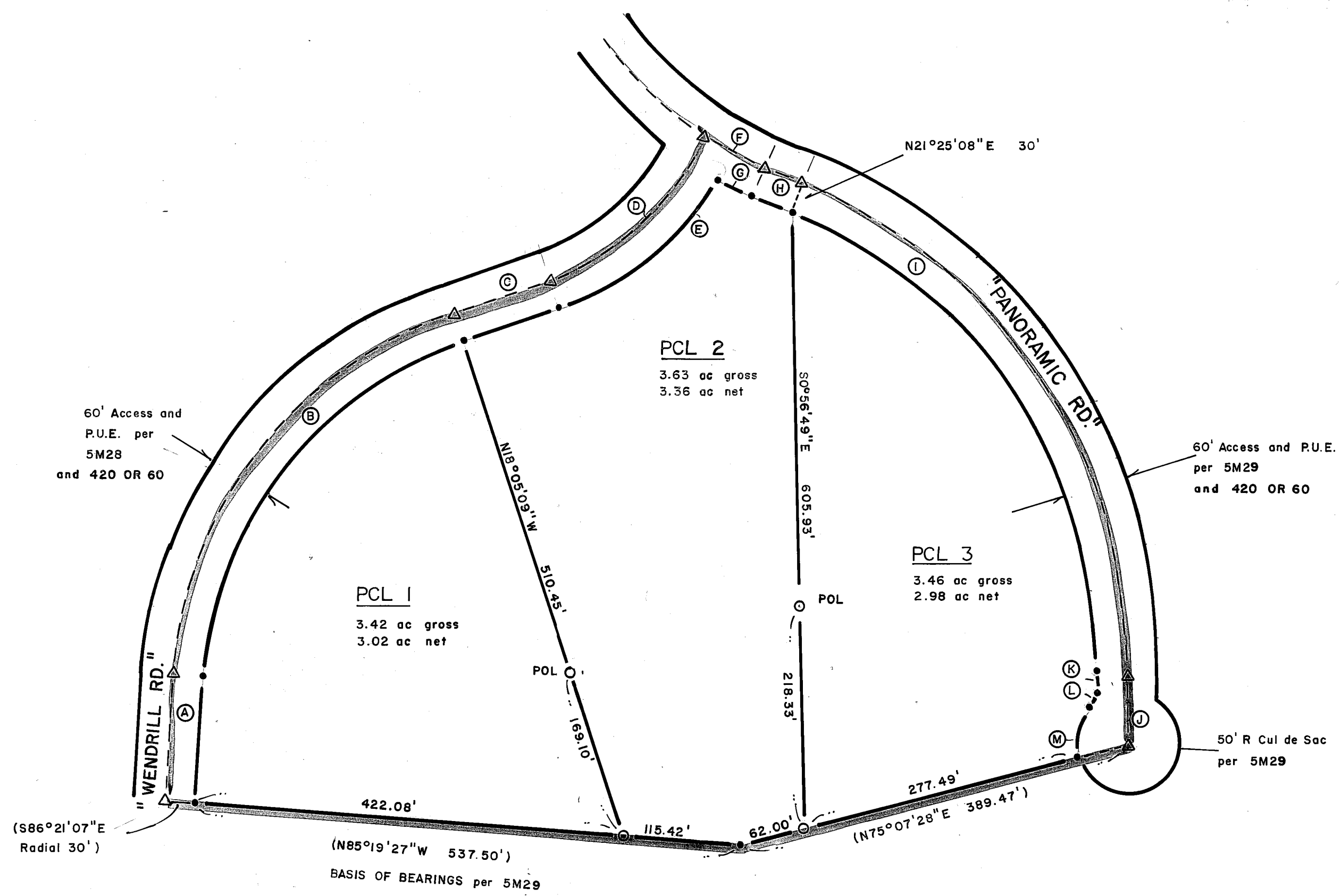
*Barbara J. Coates*  
*By: Jimmy Schaefer*  
Barbara J. Coates  
Plumas County Tax Collector

**COUNTY RECORDER'S CERTIFICATE**

Filed this 28 day of February, 1989, at 3:45 P.M. in Book 9 of Parcel Maps at page 132, at the request of the County Engineer.

Fee \$ 500  
File No. 1740

ILA DIGGS  
County Recorder  
by *Bob Cammack*  
Deputy



- NOTES**
- SUPPLEMENTAL INFORMATION: An Additional Information Sheet & Certificate of Ownership is on file with the County Recorder in Book 497 of Official Records at page 213. The certificate was signed by John A. Seibel et al and stated that they consent to the preparation and recording of this map.
  - This map is a division of Lot 6 of 5M29

**PARCEL MAP**

—FOR—  
JOHN A. SEIBEL ET AL  
PO Box 27  
Quincy, Calif. 95971

A division of 3 parcels within lot 6 of River Valley Subdivision (5M29) within a portion of T23N R14E S22 Portola, Plumas Co., CA.

Engineer: Cliff Brown Engineering & Survey  
2335 Ponderosa  
Quincy, CA 95971 283-3959

Dec 1988

Sheet 1 Of 1