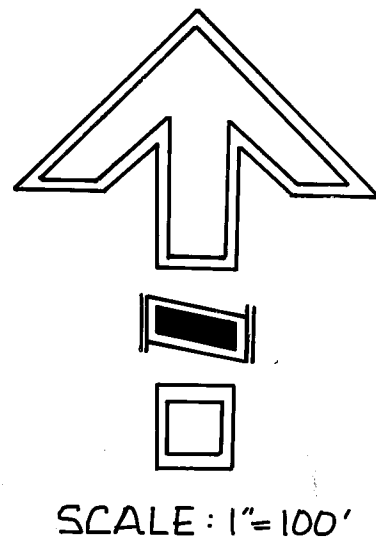


- FOUND 2 1/2" GAL BRASS CAP ON 2" O.D.I.P. LEANING OVER STAMPED
NO BT'S

128N RTE
 56/55
 57/58
 1929
- FOUND 1" O.D.I.P. IN MOUND OF STONE FW.B. - 42" PINE WITH SCRIBING "8NR651" VISIBLE N 37 3/4° W 163.1 FT. (N 38° W 2451k. - G.L.O.)
- ORIGINAL CORNER NOT FOUND CORNER FALLS IN RIPARIAN AREA AT NE CORNER OF MILL POND



- LEGEND**
- FOUND SECTION CORNER AS NOTED
 - SET 1/2"x24" REBAR WITH 1/4" ALUM. CAP STAMPED 'M FILSINGER LS 4976'
 - ◇ FOUND 1 1/4" I.D. IRON PIPE, EXCEPT AS NOTED
 - COMPUTED POINT
 - (N.T.S.) NOT TO SCALE
 - (R1) REFERS TO 1 MAPS 26 - 'CENTRAL ADDITION'
 - (R2) REFERS TO 1 MAPS 6 - 'PARRY TRACT'
 - (R3) REFERS TO 331 O.R. 270 - P.U.S.D.
 - (R4) REFERS TO 1 R.S. 114
 - REPRESENTS SURVEYED BOUNDARY
 - SET 1/2"x18" REBAR W/1/4" ALUM. CAP STAMPED 'W.C. M FILSINGER LS 4976'

SURVEYOR'S CERTIFICATE

THIS MAP WAS PREPARED BY ME OR UNDER MY DIRECTION AND IS BASED UPON A FIELD SURVEY IN CONFORMANCE WITH THE REQUIREMENTS OF THE SUBDIVISION MAP ACT AND LOCAL ORDINANCE AT THE REQUEST OF JOHN SHEEHAN IN JANUARY 1987. I HEREBY STATE THAT THIS PARCEL MAP SUBSTANTIALLY CONFORMS TO THE APPROVED OR CONDITIONALLY APPROVED TENTATIVE MAP IF ANY. ALL OF THE MONUMENTS SHOWN HEREON ARE OF THE CHARACTER AND OCCUPY THE POSITIONS INDICATED AND ARE SUFFICIENT TO ENABLE THE SURVEY TO BE RETRACED.

84-12-31-89
 Mark D. Filsinger
 MARK D. FILSINGER LS. 4976

COUNTY SURVEYOR'S CERTIFICATE

THIS MAP CONFORMS WITH THE REQUIREMENTS OF THE SUBDIVISION MAP ACT AND LOCAL ORDINANCE.

3-30-89
 DATED
 Lawrence J. Brock
 by R. Tom Slaughter
 LAWRENCE J. BROCK RLE 1352B
 PLUMAS COUNTY SURVEYOR

COUNTY RECORDER'S CERTIFICATE

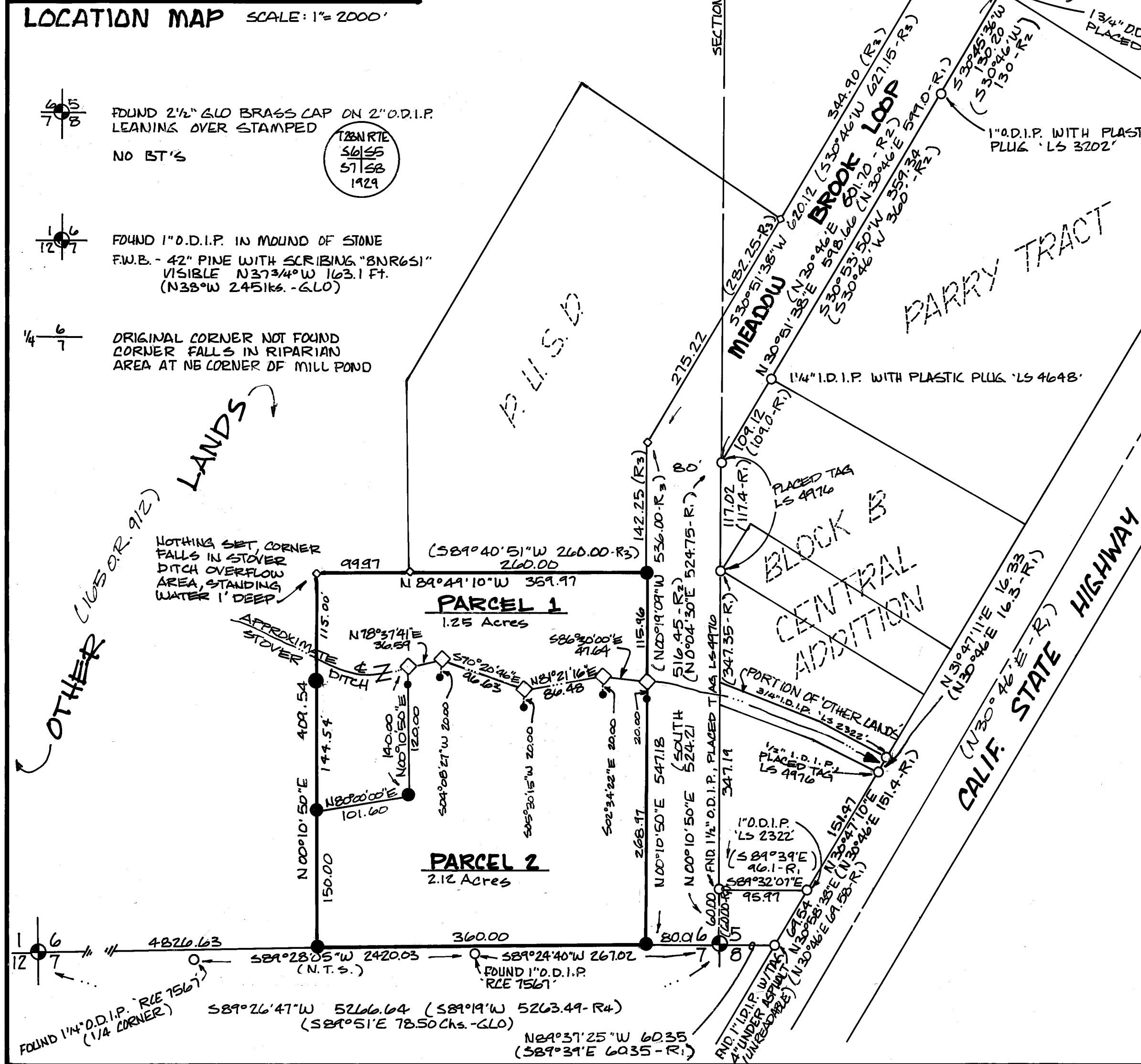
FILED THIS 30TH DAY OF MARCH, 1989 AT 3:25 P.M. IN BOOK 9 OF PARCEL MAPS AT PAGE 137, AT THE REQUEST OF THE COUNTY ENGINEER.

FEE 5.00
 FILE NO. 1869
 ILA DIGGS
 PLUMAS COUNTY RECORDER
 BY *Bob Ammark*
 DEPUTY

COUNTY TAX COLLECTOR'S CERTIFICATE

I, BARBARA J. COATES, TAX COLLECTOR OF THE COUNTY OF PLUMAS, STATE OF CALIFORNIA, DO HEREBY CERTIFY THAT THERE ARE NO TAX LIENS AGAINST THE PARCELS AS SHOWN HEREON FOR UNPAID COUNTY, MUNICIPAL, OR LOCAL TAXES OR SPECIAL ASSESSMENTS COLLECTED AS TAXES EXCEPT TAXES OR ASSESSMENTS NOT YET PAYABLE, TAXES OR ASSESSMENTS WHICH ARE A LIEN BUT NOT YET PAYABLE ARE ESTIMATED TO BE IN THE AMOUNT OF \$ 637.00

DATED 3-30-89
 Barbara J. Coates
 By: *Jimmy Schoder, ast.*
 BARBARA J. COATES
 PLUMAS COUNTY TAX COLLECTOR



MAP NOTES

1) A CERTIFICATE OF OWNERSHIP IS ON FILE WITH THE COUNTY RECORDER IN BOOK 498 OF OFFICIAL RECORDS AT PAGE 528. THE CERTIFICATE WAS SIGNED BY ROBERT W. HATHAWAY AND STATED THAT THEY CONSENT TO THE PREPARATION AND RECORDING OF THIS MAP AND THAT THEY ARE THE ONLY PERSONS WHOSE CONSENT IS REQUIRED TO PASS TITLE TO SAID LAND.

BASIS OF BEARINGS

TRUE NORTH BY SOLAR OBSERVATION BY THE ALTITUDE METHOD FROM A POINT S51°11'44"E 104.03 FT. FROM THE NORTHEAST CORNER OF PARCEL 1 AS SHOWN HEREON.

PARCEL MAP
 FOR
COLLINS PINE COMPANY

LOCATED IN THE SOUTH HALF OF SECTION 6 AND THE SOUTHWEST QUARTER OF SECTION 5, TOWNSHIP 28 NORTH, RANGE 7 EAST, MOUNT DIABLO MERIDIAN, CHESTER, PLUMAS COUNTY, CALIFORNIA.

MARK D. FILSINGER
 LAND SURVEYOR

P.O. BOX 4439 INCLINE VILLAGE, NV. 89450 670 MARTE PEAK (702) 832-0246
 DECEMBER 1988 SHEET 1 OF 1