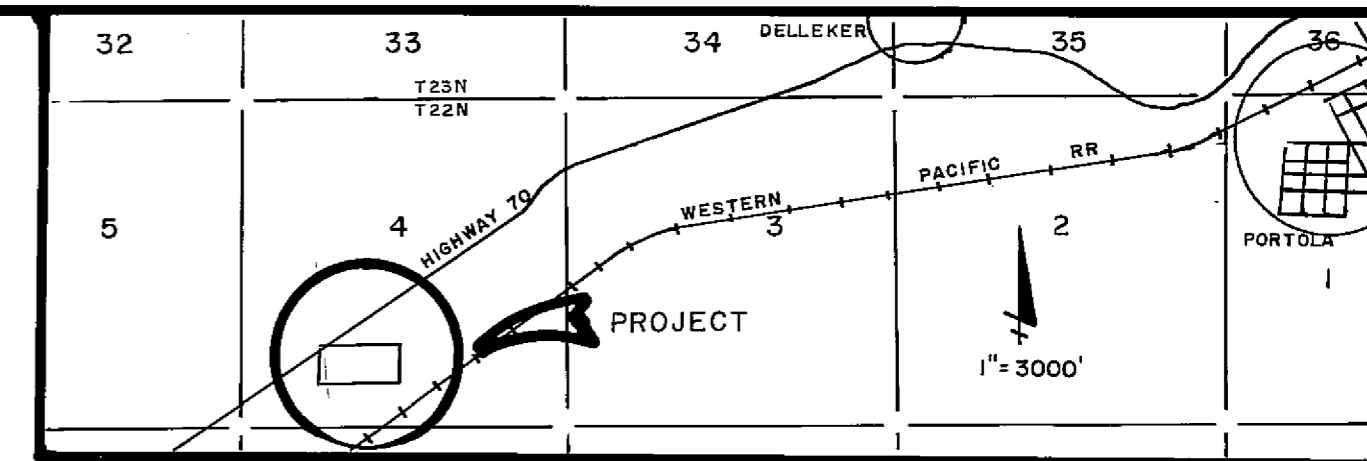


LEGEND

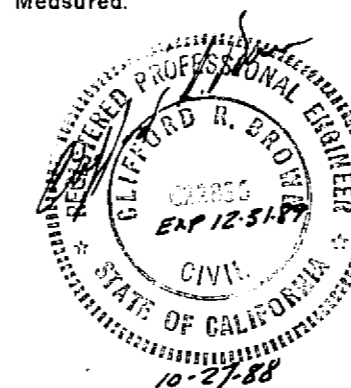
- Set 1/2" rebar tagged RCE 22836
- ⊙ Found 28" iron post 2 1/2" diameter Bureau of Land Management brass cap monument.
- () Dependent resurvey of a portion of the township boundary and sectional lines, the survey of the subdivision of Section 4, and the metes-and-bounds survey of a portion of State Hwy No. 70, executed by W.G. Snow, U.S. Cadistral Surveyor, under special instructions for Group No. 906, 1984. Record & Measured.



LOCATION MAP

SURVEYOR'S CERTIFICATE

This map was prepared by me or under my direction and is based upon a field survey in conformance with the requirements of the Subdivision Map Act and Local Ordinance at the request of Robert F. Carmody in July 1988. All of the monuments shown hereon are of the character and occupy the positions indicated and are sufficient to enable the survey to be retraced. I hereby state that this parcel map substantially conforms to the approved or conditionally approved tentative map, if any.



Clifford R. Brown
Clifford R. Brown RCE 22836

COUNTY SURVEYOR'S CERTIFICATE

This map conforms with the requirements of the Subdivision Map Act and Local Ordinance.

Dated 11-22-88

Lawrence J. Block
Lawrence J. Block RCE 13528
Plumas County Surveyor

COUNTY TAX COLLECTOR'S CERTIFICATE

I, Barbara J. Coates, Tax Collector of the County of Plumas, State of California, do hereby certify that there are no tax liens against the Parcels, as shown hereon, for unpaid state, county, municipal, or local taxes or special assessments collected as taxes, except taxes or assessments not yet payable. Taxes or assessments which are a lien but not yet payable, are estimated to be in the amount of \$568.00.

Dated 8-9-89

Barbara J. Coates
By: Ginny Schoeder
Barbara J. Coates
Plumas County Tax Collector

COUNTY RECORDER'S CERTIFICATE

Filed this 9TH day of AUGUST, 1989, at 3:30 P.M. in Book 9 of Parcel Maps, at page 143, at the request of the County Engineer.

Fee \$ 5.00
File No. 5028

ILA DIGGS
County Recorder
by *Ann Van Gulden*
Deputy

PARCEL MAP

A Division of Four parcels within a portion of SW1/4 S4 T22N R13E MDBM 3-miles west of Portola, Plumas County, California.

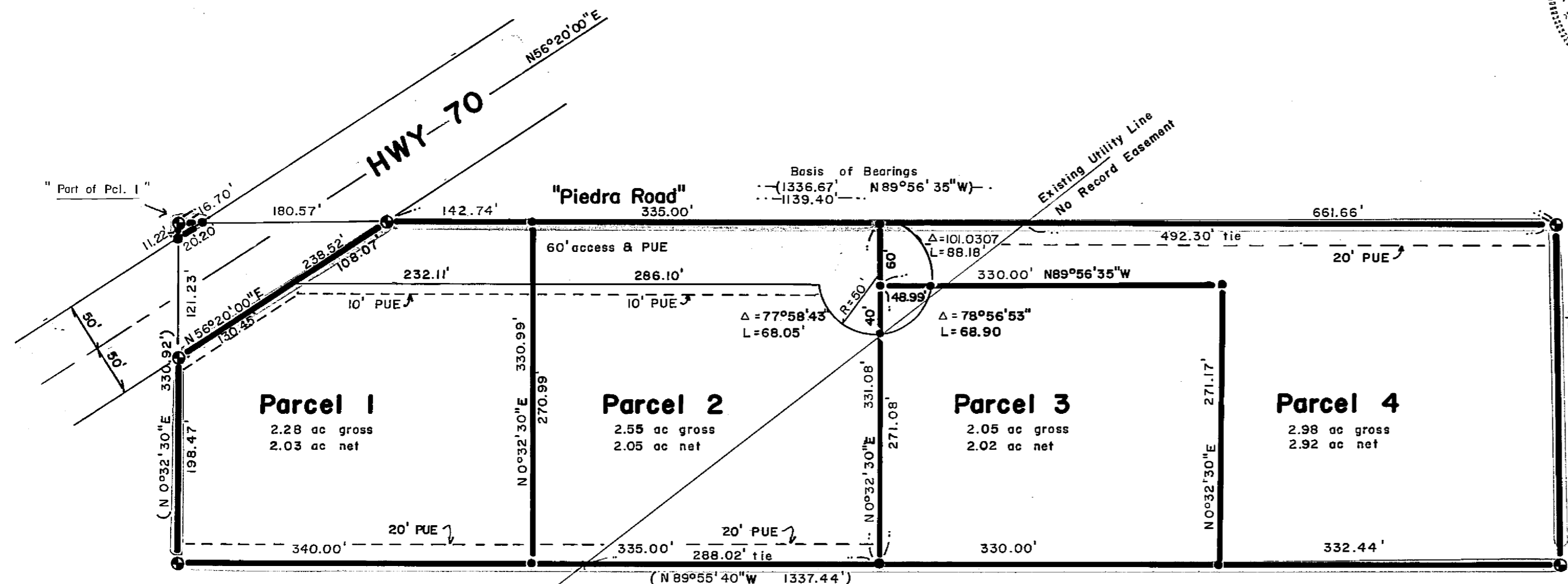
-FOR-

Robert F. Carmody, trustee of Giant Quicksilver Corporation
Money Purchase Pension Plan and Profit Sharing Plan
573 Riveria Circle
Larkspur, CA 94939 415-927-4928

Engineer: Cliff Brown Engineering & Survey
2335 Ponderosa
Quincy, CA 95971 283-3959

July 1988

Sheet 1 of 1



SUPPLEMENTAL INFORMATION: An Additional Information Sheet & Certificate of Ownership is on file with the County Recorder in Book 505 of Official Records at page 549. The certificate was signed by Robert F. Carmody, Trustee of Giant Quicksilver Corporation, and stated that they consent to the preparation and recording of this map.