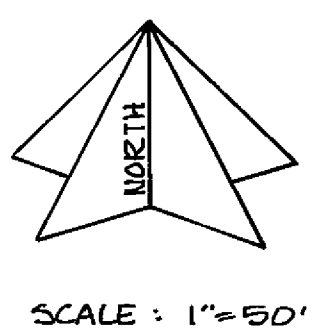
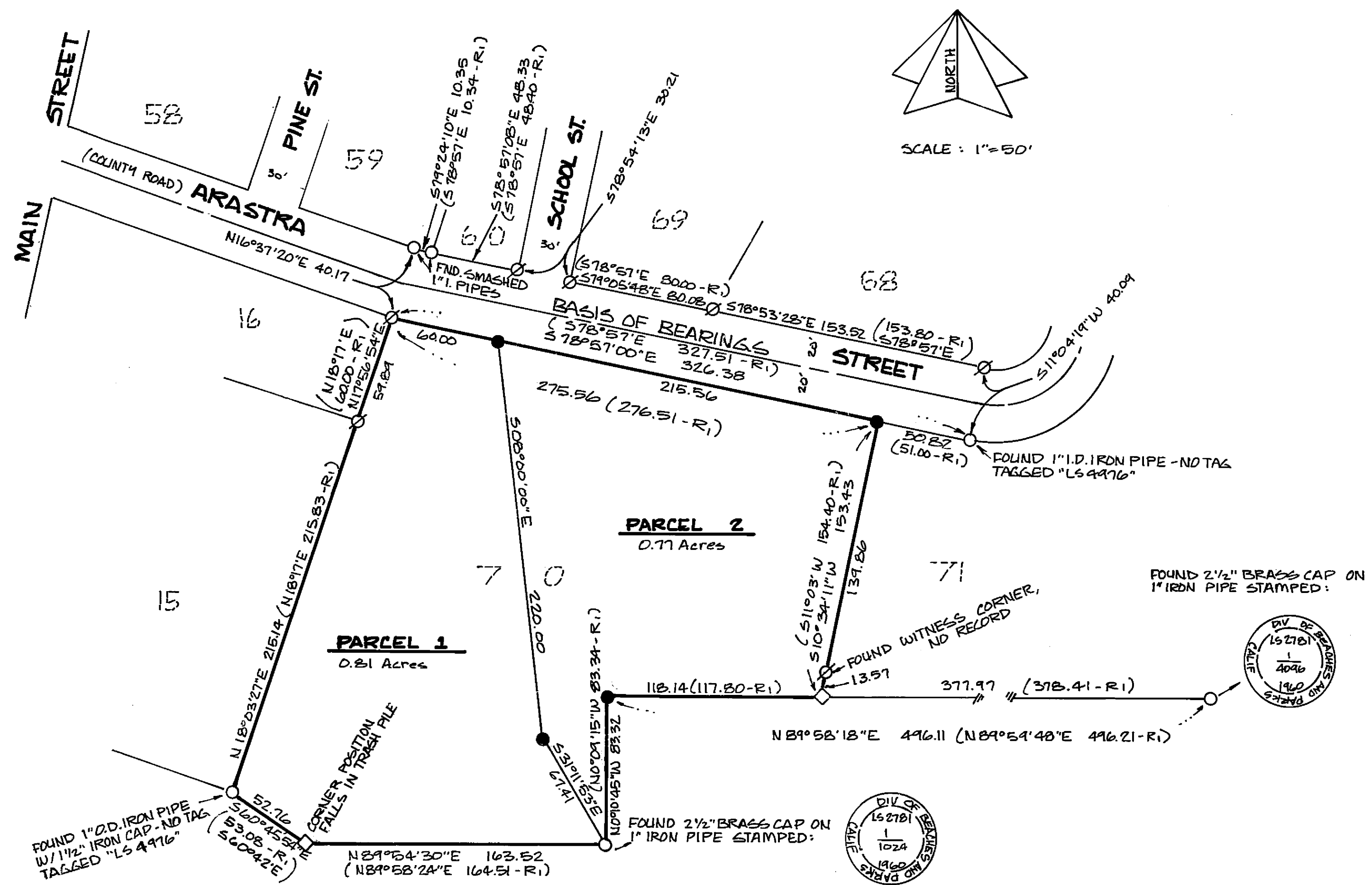


LOCATION MAP SCALE: 1"=1 Mile



SURVEYOR'S CERTIFICATE

THIS MAP WAS PREPARED BY ME OR UNDER MY DIRECTION AND IS BASED UPON A FIELD SURVEY IN CONFORMANCE WITH THE REQUIREMENTS OF THE SUBDIVISION MAP ACT AND LOCAL ORDINANCE AT THE REQUEST OF DAVID BENNETT IN APRIL 1988. I HEREBY STATE THAT THIS PARCEL MAP SUBSTANTIALLY CONFORMS TO THE APPROVED OR CONDITIONALLY APPROVED TENTATIVE MAP, IF ANY. ALL OF THE MONUMENTS SHOWN HEREON ARE OF THE CHARACTER AND OCCUPY THE POSITIONS INDICATED AND ARE SUFFICIENT TO ENABLE THE SURVEY TO BE RETRACED.

Mark D. Filsinger
 MARK D. FILSINGER PLS 4916

COUNTY SURVEYOR'S CERTIFICATE

THIS MAP CONFORMS WITH THE REQUIREMENTS OF THE SUBDIVISION MAP ACT AND LOCAL ORDINANCE.

9/14/89
 DATED

Lawrence J. Brock
 LAWRENCE J. BROCK RCE 13528
 PLUMAS COUNTY SURVEYOR

COUNTY RECORDER'S CERTIFICATE

FILED THIS 14th DAY OF SEPTEMBER, 1989, AT 3:25 PM. IN BOOK 9 OF PARCEL MAPS AT PAGE 144, AT THE REQUEST OF THE COUNTY ENGINEER.

FEE 5.00
 FILE NO. 6394

ILA DIGGS
 PLUMAS COUNTY RECORDER
 BY Barb Cammack
 DEPUTY

COUNTY TAX COLLECTOR'S CERTIFICATE

I, BARBARA J. COATES, TAX COLLECTOR OF THE COUNTY OF PLUMAS, STATE OF CALIFORNIA, DO HEREBY CERTIFY THAT THERE ARE NO TAX LIENS AGAINST THE PARCELS AS SHOWN HEREON FOR UNPAID STATE, COUNTY, MUNICIPAL OR LOCAL TAXES OR SPECIAL ASSESSMENTS COLLECTED AS TAXES EXCEPT TAXES OR ASSESSMENTS NOT YET PAYABLE. TAXES OR ASSESSMENTS WHICH ARE A LIEN BUT NOT YET PAYABLE ARE ESTIMATED TO BE IN THE AMOUNT OF \$316.00.

DATED 9-14-89

Barbara J. Coates
 BARBARA J. COATES
 PLUMAS COUNTY TAX COLLECTOR

NOTES

- 1) CERTIFICATES OF OWNERSHIP IS ON FILE WITH THE COUNTY RECORDER IN BOOK 507 OF OFFICIAL RECORDS AT PAGES 582-583. THE CERTIFICATE WAS SIGNED BY AND STATED THAT THEY CONSENT TO THE PREPARATION AND RECORDING OF THIS MAP AND THAT THEY ARE THE ONLY PERSONS WHOSE CONSENT IS REQUIRED TO PASS TITLE TO SAID LAND.
- 2) AN ADDITIONAL INFORMATION SHEET IS ON FILE IN THE COUNTY RECORDERS OFFICE AND IS RECORDED IN BOOK 507 OF OFFICIAL RECORDS AT PAGES 580-581
- 3) THE GRANT BOUNDARIES METHOD (BLM MANUAL, P. 142) WAS USED TO COMPUTE THE MISSING CORNER LOCATIONS BETWEEN FOUND CORNERS ON THE SOUTH LINE OF PARENT PARCEL LOT 70.

LEGEND

- FOUND MONUMENT AS NOTED
- ⊗ FOUND 1" I.D. IRON PIPE W/ BRASS TAG "RCE 1967"
- SET 1/2" x 24" REBAR W/ 1/4" ALUMINUM CAP STAMPED 'M FILSINGER LS 4916'
- ◇ COMPUTED POINT, NOTHING SET
- SURVEYED BOUNDARY
- (R) RECORD DATA PER 3 MAPS 34

PARCEL MAP

FOR
 DAVID BENNETT & GLORIA OLSON

LOCATED IN THE NORTHWEST QUARTER OF SECTION 24, TOWNSHIP 22 NORTH, RANGE 11 EAST, MOUNT DIABLO MERIDIAN, PLUMAS COUNTY, CALIFORNIA.

MARK D. FILSINGER
 LAND SURVEYOR

P.O. BOX 4939 (702) 832-0246
 INCLINE VILLAGE, NV. 89450
 APRIL 1988 SHEET 1 OF 1