

COUNTY SURVEYOR'S CERTIFICATE

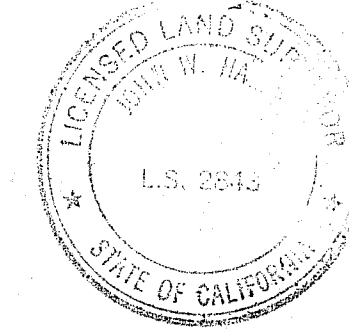
This map conforms with the requirements of the Subdivision Map Act and local ordinances.

Dated 8-10-84

Lawrence J. Brock by Tom Smith  
Lawrence J. Brock R.C.E. 13528  
Plumas County Surveyor

SURVEYOR'S CERTIFICATE

This map was prepared by me or under my direction and is based upon a field survey in conformance with the requirements of the Subdivision Map Act and local ordinances at the request of Robert Washburn on August 17, 1983. All of the monuments shown hereon are of the character and occupy the positions indicated and are sufficient to enable the survey to be retraced. I hereby state that the parcel map procedures of the local agency have been complied with and that this parcel map conforms to the approved tentative map and the conditions of approval thereof which were required to be fulfilled prior to filing the parcel map, if any.



John W. Hamby  
John W. Hamby L.S. 2843

COUNTY TAX COLLECTOR'S CERTIFICATE

I, Barbara J. Cokor, Tax Collector of the County of Plumas, State of California, do hereby certify that there are no tax liens against the Parcels, as shown hereon, for unpaid county, municipal, or local taxes or special assessments collected as taxes, except taxes or assessments not yet payable. Taxes or assessments which are a lien but not yet payable, are estimated to be in the amount of 636.00.

Dated Aug 10, 1984

Barbara J. Cokor by Jimmy Schombert  
Barbara J. Cokor  
Plumas County Tax Collector

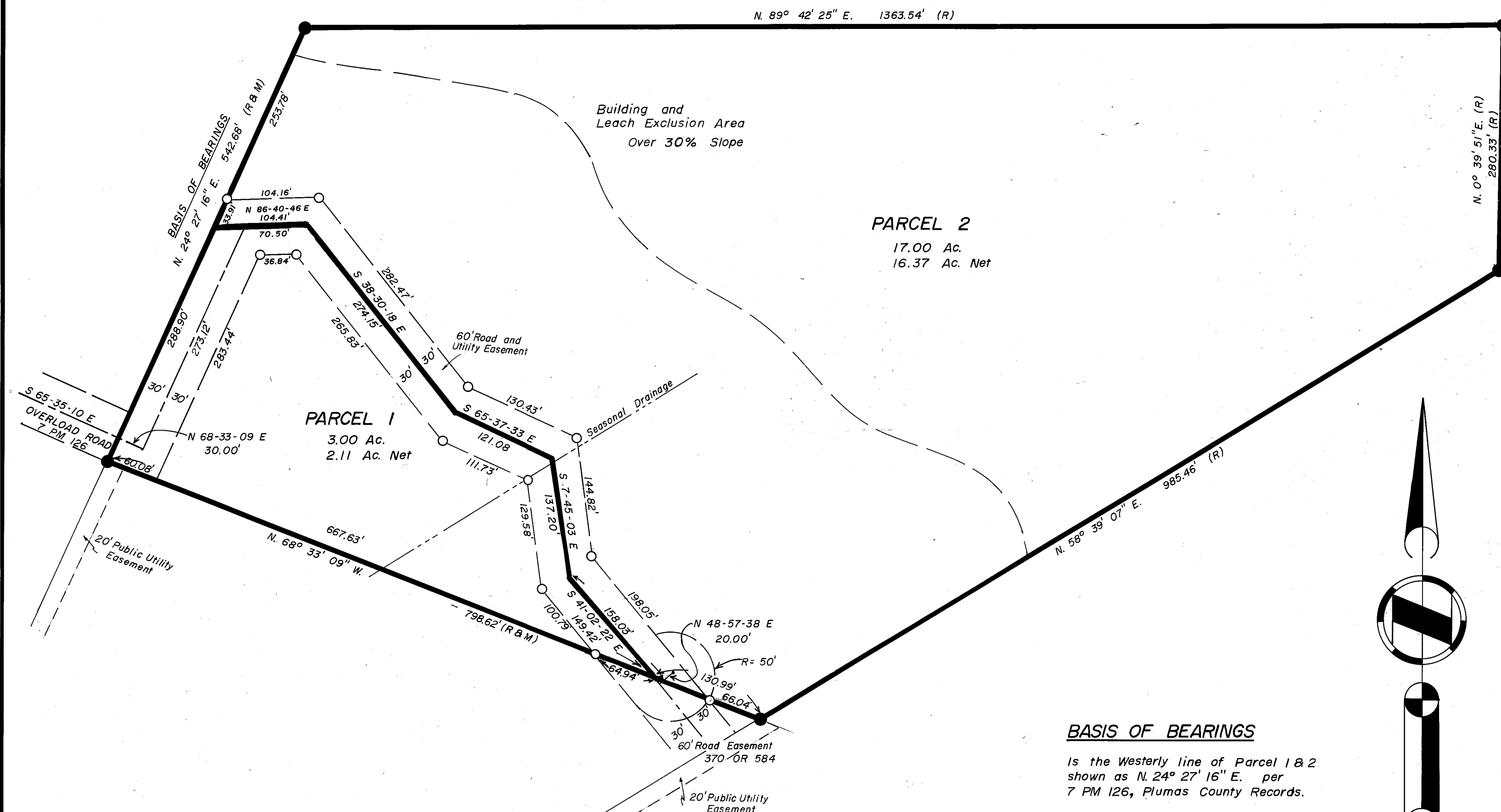
COUNTY RECORDER'S CERTIFICATE

Filed this 10th day of August, 1984, at 2:45 P.M. in Book 9 of Parcel Maps, at Page 3, at the request of the County Engineer.

Fee 5.00  
File No. 905

Ila Diggs  
County Recorder

By Keshup DeBerg  
Deputy



PARCEL 2  
17.00 Ac.  
16.37 Ac. Net

PARCEL 1  
3.00 Ac.  
2.11 Ac. Net

Building and Leach Exclusion Area Over 30% Slope

BASIS OF BEARINGS

Is the Westerly line of Parcel 1 & 2 shown as N. 24° 27' 16" E. per 7 PM 126, Plumas County Records.

NOTES

Certificate of Owners Consent to preparation and filing of this map is in 411 O.R. 391, Dated 5-4-84

Parcels shown hereon are a division of Parcel 2 per 7 PM 126.

Roads shown hereon are private easements not subject to improvements or maintenance by Plumas County. Such easements may not become effective unless, and until reservations and grants are included in the respective deeds.

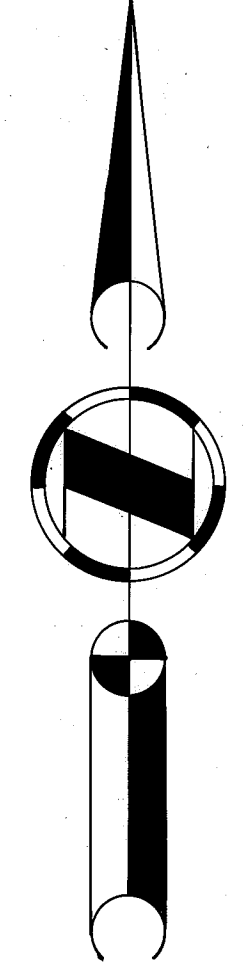
Leach Exclusion Areas are all areas within 50' of property lines and watercourses, within 100' of wells, within easements and areas with a slope over 30%.

Parcels shown hereon are subject to highly erosive soil conditions:

- A. Structures should be setback from the tops of ravines further than the intersection of a 2:1 slope line from the ravine bottom.
B. Special attention should be given to runoff from roofs or pavement through the utilization of lined ditches, culverts and energy dissipaters.

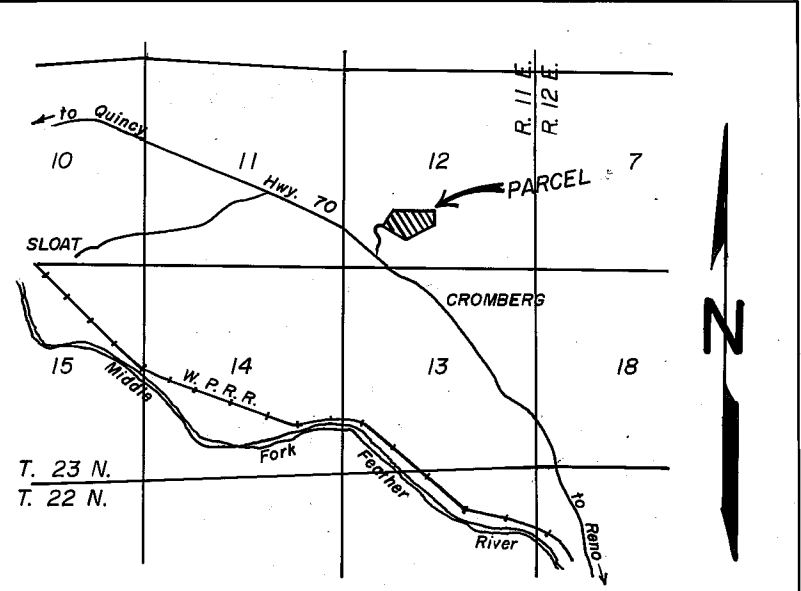
LEGEND

- Found Rebar & Cap, R.C.E. 15265
Set 1/2" Rebar & Cap, L.S. 2843
(R) Record information per 7 PM 126
(M) Measured information



SCALE 1" = 100'

LOCATION MAP  
SCALE 1" = 1 MILE



PARCEL MAP

FOR ROBERT WASHBURN

A PORTION OF THE SOUTH 1/2 OF THE S.W. 1/4 OF SECTION 12, T. 23 N., R. 11 E., M.D.B. & M. - PLUMAS COUNTY - CALIFORNIA

HAMBY SURVEYING INC.  
P.O. Box 1209 - L.S. 2843  
Portola, California 96122  
Phone (916) 832-5571.