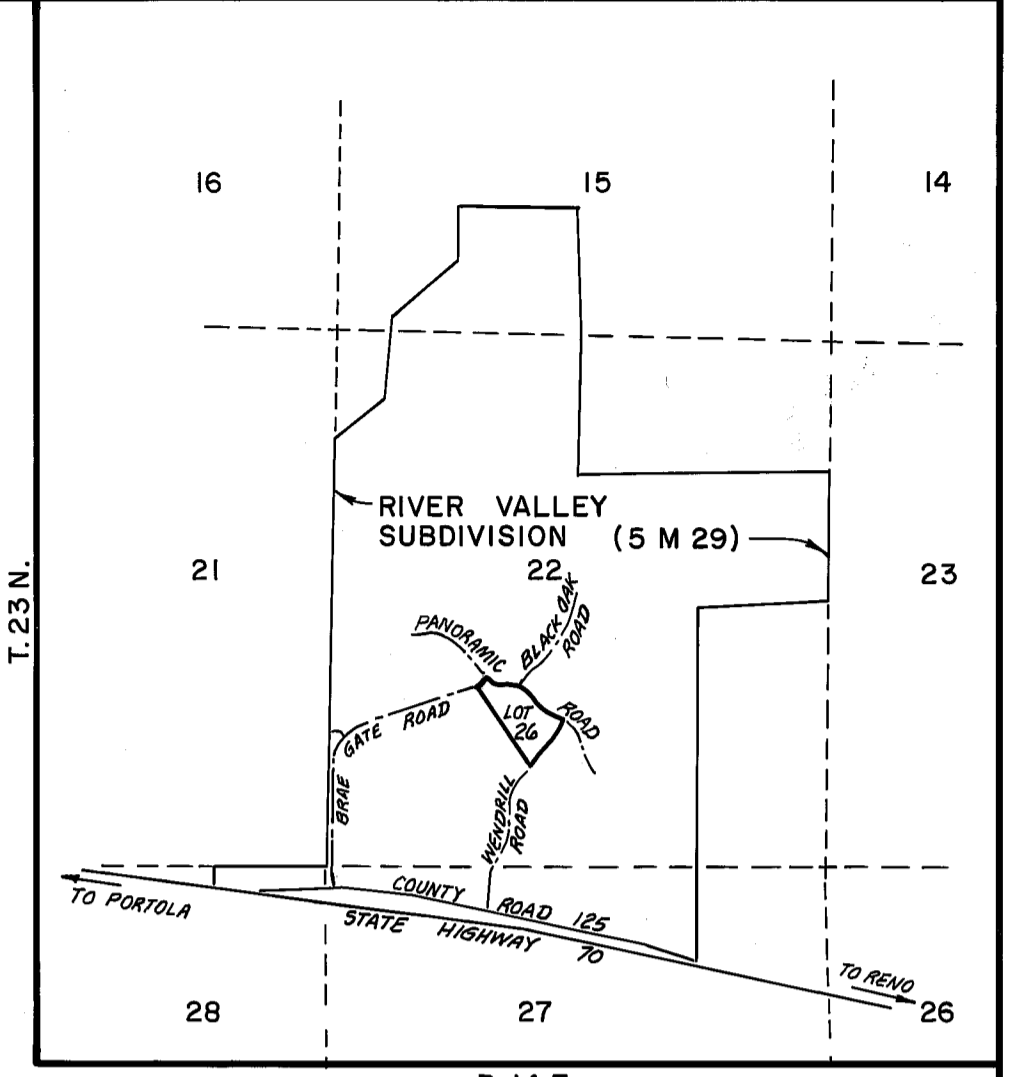


LEGEND

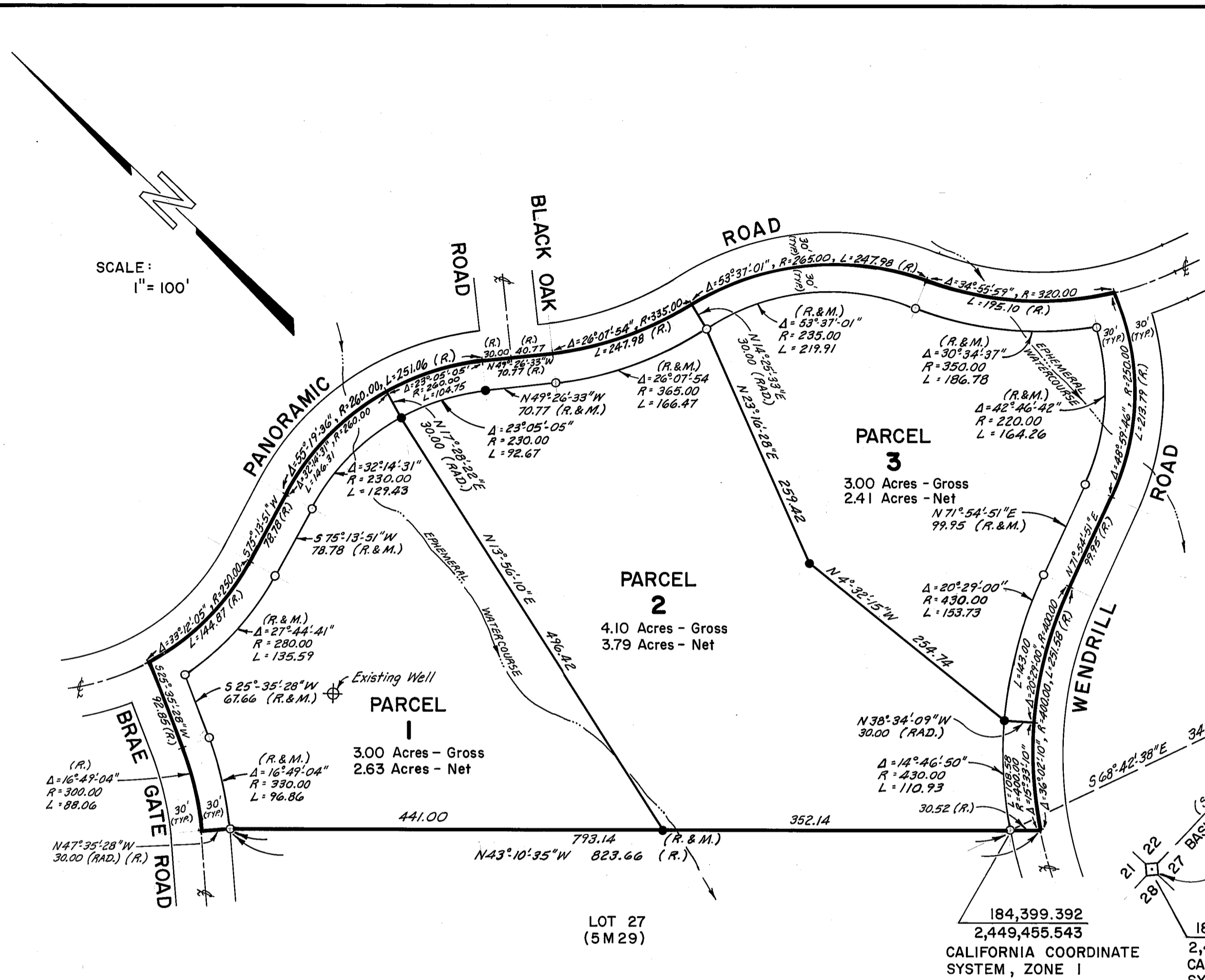
- FOUND 1/2" REBAR WITH CAP, STAMPED L.S. 2843, PER 5 M 29.
- SET 1/2" REBAR WITH PLASTIC CAP, STAMPED R.C.E. 13225.
- (R.) INDICATES RECORD DATA PER 5 M 29.
- (R. & M.) INDICATES RECORD DATA PER 5 M 29 AND MEASURED DATA.
- (RAD.) INDICATES RADIAL BEARING.
- 1 M 23 RECORD MAP, BOOK AND PAGE.



LOCATION MAP SCALE: 1" = 2000'

MAP NOTES

- A CERTIFICATE OF OWNERSHIP IS ON FILE WITH THE COUNTY RECORDER IN BOOK 413 OF OFFICIAL RECORDS AT PAGE 545. THE CERTIFICATE WAS SIGNED BY JODY B. CARTER AND STATED THAT SHE CONSENTS TO THE PREPARATION AND RECORDING OF THIS MAP, AND THAT SHE IS THE ONLY PERSON WHOSE CONSENT IS REQUIRED TO PASS TITLE TO SAID LAND.
- BRAE GATE ROAD, PANORAMIC ROAD, AND WENDRILL ROAD ARE ALL 60 FOOT WIDE PRIVATE ROAD EASEMENTS AND PUBLIC UTILITY EASEMENTS.
- LEACH EXCLUSION AREAS ARE TO INCLUDE AREAS WITHIN 50 FEET FROM EPHEMERAL STREAMS, 100 FEET FROM WELLS, AND WITHIN A DISTANCE OF 4 TIMES A CUT BANK HEIGHT FROM THE TOP OF CUT BANKS, AND WITHIN 50 FEET OF ALL PARCEL LINES EXCEPT THOSE LINES BORDERING A LOT WITH A SPECIFIED WELL SITE.
- ROADS SHOWN HEREON, BRAE GATE ROAD, PANORAMIC ROAD, AND WENDRILL ROAD, ARE PRIVATE EASEMENTS NOT SUBJECT TO IMPROVEMENT OR MAINTENANCE BY PLUMAS COUNTY. SUCH EASEMENTS WILL NOT BECOME EFFECTIVE UNLESS AND UNTIL RESERVATIONS AND GRANTS ARE INCLUDED IN THE RESPECTIVE DEEDS.
- ALL BEARINGS ARE GRID AND ALL DISTANCES ARE GROUND, BASED ON THE CALIFORNIA COORDINATE SYSTEM, ZONE 1. COORDINATES SHOWN WERE ESTABLISHED FROM THE LINE BETWEEN THE SOUTHEAST AND SOUTHWEST CORNERS OF SECTION 22, T.23 N., R.14 E. PER 3 R.S. 63, PLUMAS COUNTY RECORDS, SAID LINE HAVING A BEARING SHOWN AS 388°44'05"W AND USED AS THE BASIS OF BEARINGS FOR THIS MAP. MULTIPLY GROUND DISTANCES BY 0.9998137 TO OBTAIN GRID DISTANCES.



Found Rock Mound and scribed Wood Post & Rebar & Alum. Cap L.S. 2843 per G R.S. 66.

CALIFORNIA COORDINATE SYSTEM, ZONE 1

Found Partially Buried Rock Mound 1.5' East of Fence Corner with 9"x9" Rock with Nail and Tag L.S. 2843 per G R.S. 66.

COUNTY SURVEYOR'S CERTIFICATE

THIS MAP CONFORMS WITH THE REQUIREMENTS OF THE SUBDIVISION MAP ACT AND LOCAL ORDINANCE.

DATED: Sept 29, 1984 SIGNED: Lawrence J. Brock by R. Tom Schulte LAWRENCE J. BROCK, R.C.E. 13528 PLUMAS COUNTY SURVEYOR

RECORDER'S CERTIFICATE

FILED THIS 25th DAY OF SEPTEMBER, 1984, AT 9:00 A.M. IN BOOK 9 OF PARCEL MAPS AT PAGE 7, AT THE REQUEST OF THE COUNTY ENGINEER.

ILA DIGGS COUNTY RECORDER

FEE: \$5.00 FILE NO.: 2343

BY: Patricia Lacey DEPUTY

ENGINEER'S CERTIFICATE

THIS MAP WAS PREPARED BY ME OR UNDER MY DIRECTION AND IS BASED UPON A FIELD SURVEY IN CONFORMANCE WITH THE REQUIREMENTS OF THE SUBDIVISION MAP ACT AND LOCAL ORDINANCE AT THE REQUEST OF JODY B. CARTER IN JUNE, 1984. I HEREBY STATE THAT THIS PARCEL MAP SUBSTANTIALLY CONFORMS TO THE APPROVED OR CONDITIONALLY APPROVED TENTATIVE MAP, IF ANY.

LARRY A. FITES R.C.E. 13225

COUNTY TAX COLLECTOR'S CERTIFICATE

I, BARBARA J. COKOR, TAX COLLECTOR OF THE COUNTY OF PLUMAS, STATE OF CALIFORNIA, DO HEREBY CERTIFY THAT THERE ARE NO TAX LIENS AGAINST THE PARCELS AS SHOWN HEREON, FOR UNPAID COUNTY, MUNICIPAL, OR LOCAL TAXES OR SPECIAL ASSESSMENTS COLLECTED AS TAXES, EXCEPT TAXES OR ASSESSMENTS NOT YET PAYABLE. TAXES OR ASSESSMENTS WHICH ARE A LIEN BUT NOT YET PAYABLE, ARE ESTIMATED TO BE IN THE AMOUNT OF \$ 446.00.

DATED: Sept 20, 1984 BARBARA J. COKOR PLUMAS COUNTY TAX COLLECTOR

PARCEL MAP

FOR: JODY B. CARTER

BEING A DIVISION OF LOT 26 OF RIVER VALLEY SUBDIVISION, RECORDED IN BOOK 5 OF MAPS AT PAGE 29, PLUMAS COUNTY RECORDS. BEING A PORTION OF THE SOUTHWEST 1/4 OF SECTION 22, T.23 N., R.14 E., M.D.B.&M. IN PLUMAS COUNTY, CALIFORNIA

LARRY FITES ENGINEERING P.O. BOX 308 GRAEAGLE, CALIFORNIA 96103 R.C.E. 13225