

### COUNTY TAX COLLECTOR

I, Barbara J. Cokor, Tax Collector of the County of Plumas, State of California, do hereby certify that there are no tax liens against the parcels as shown hereon for unpaid County, Municipal or Local Taxes or Special Assessments collected as taxes, except taxes or assessments not yet payable. Taxes or assessments which are a lien but not yet payable are estimated to be in the amount of none.

dated Nov. 19, 1985

*Barbara J. Cokor by Minny Schober, asst.*  
 Barbara J. Cokor  
 Plumas County Tax Collector

#### NOTES:

1. Leach exclusion areas are all areas within 50' of property lines, and water courses, within a distance of four times the height of any cutbank, and all slopes in excess of 30%, and areas within the flood plains.
2. Roads shown hereon, "Grizzly Bar Road" is a private easement not subject to improvement or maintenance by Plumas County. Such easements will not become effective unless reservations and grants are included in the respective deeds.
3. A certificate of ownership is on file with the County Recorder in Book 433 of Official Records at page 442. The certificate was signed by Jerome Page and stated that he consents to the preparation and recording of this map, and that he is the only person whose consent is required to pass clear title to said lands.

### COUNTY RECORDER'S CERTIFICATE

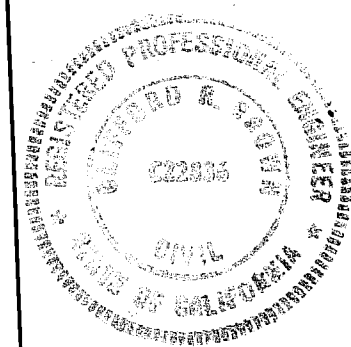
Filed this 19<sup>th</sup> day of November 1985, at 10:42 A.M. in Book 9 of Parcel Maps at Page 40, 41 at the request of the County Engineer.

Fee \$7.00  
 File No. 3486

Ila Diggs, County Recorder  
 by Bob Carnack  
 Deputy

### ENGINEER'S CERTIFICATE

This map was prepared by me or under my direction and is based upon a field survey in conformance with the requirements of the Subdivision Map Act and Local Ordinance at the request of Jerome Page in August 1985. All of the monuments shown hereon are of the character and occupy the positions indicated and are sufficient to enable the survey to be retraced. I hereby state that the parcel map procedures of the local agency have been complied with and that this parcel map conforms to the approved tentative map and the conditions of approval thereof which were required to be fulfilled prior to the filing of the parcel map.



*Clifford R. Brown*  
 Clifford R. Brown RCE 22836

### COUNTY SURVEYOR'S CERTIFICATE

This map conforms with the requirements of the Subdivision Map Act and Local Ordinance.

dated 11-19-85

*Lawrence J. Brock*  
 Lawrence J. Brock RCE 13528  
 Plumas County Surveyor

### PARCEL MAP

A DIVISION OF FOUR PARCELS

for

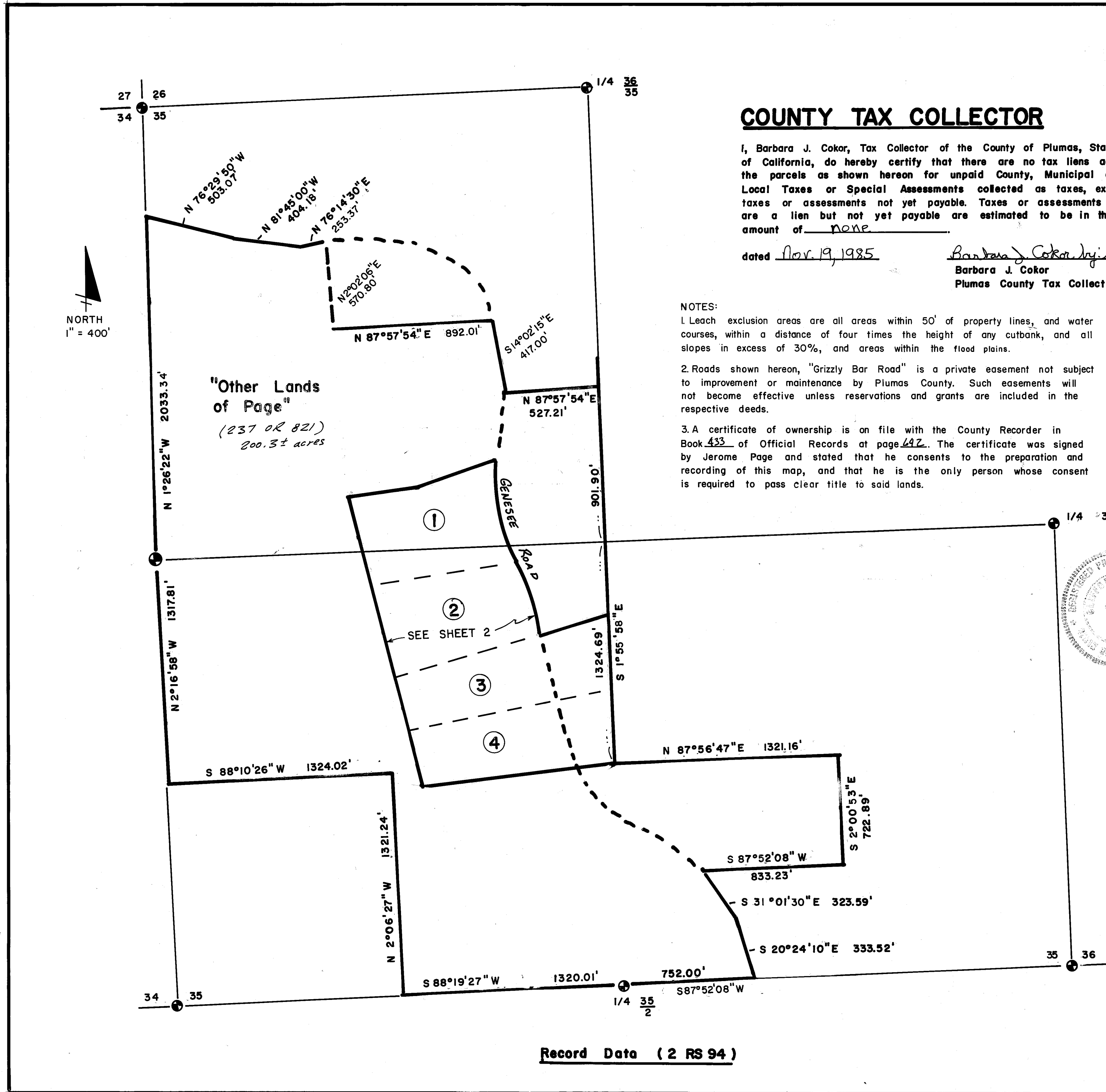
### JEROME PAGE

A portion of Section 35, T26N, RIOE, MDBM  
 Plumas County, California

Clifford R. Brown Engineering & Survey  
 Rt. 1 Box 480 B  
 Quincy, CA 95971

August 1985

dib Sheet 1 of 2



Record Date ( 2 RS 94 )