

BASIS OF BEARING

IS THE LINE FROM THE BACK CORNER OF LOTS 47/46 TO THE NORTHEAST CORNER OF LOT 44 SHOWN AS N. 35° 59' E, PER. 2 M 32. PARKSIDE TERRACE SUBDIVISION UNIT NUMBER ONE.

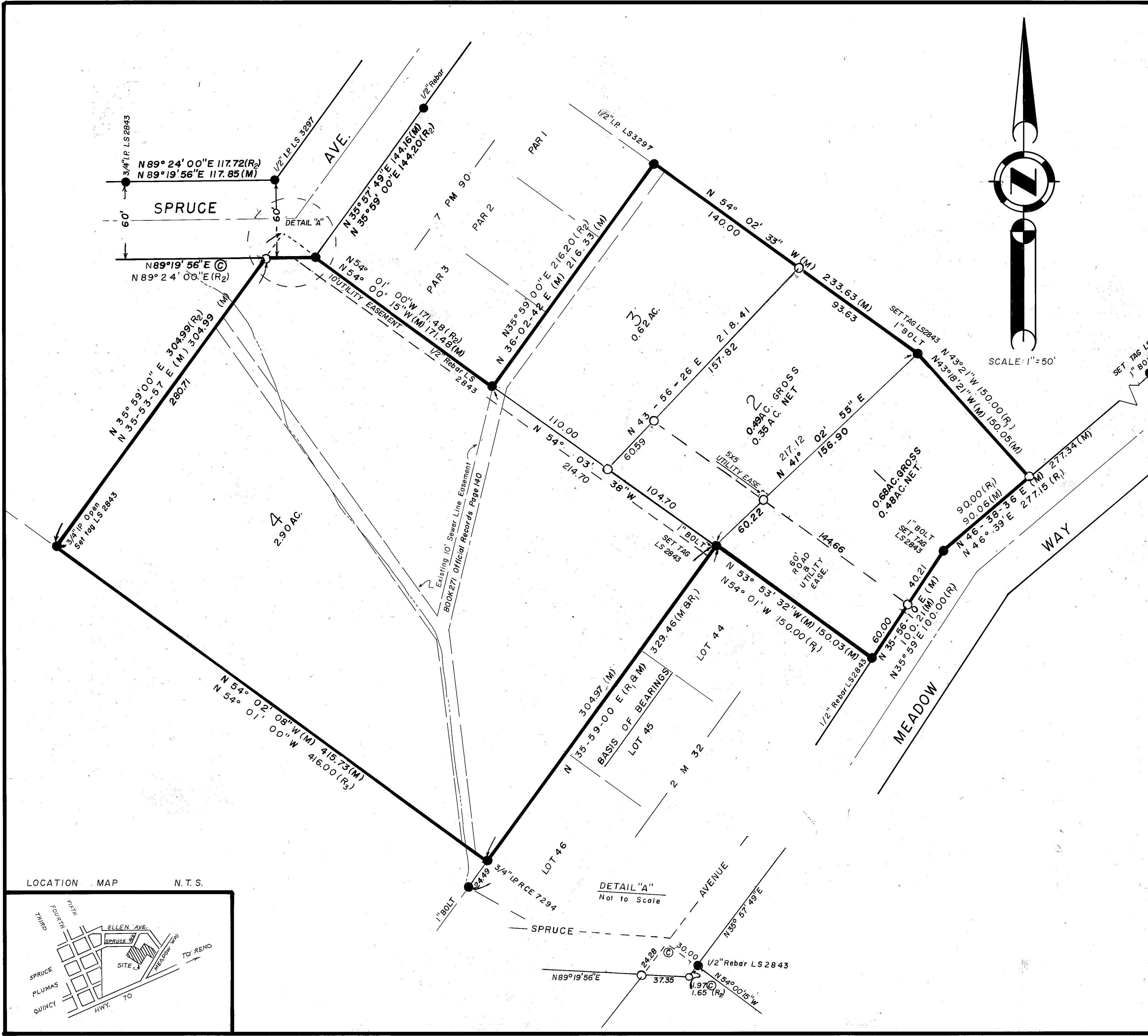
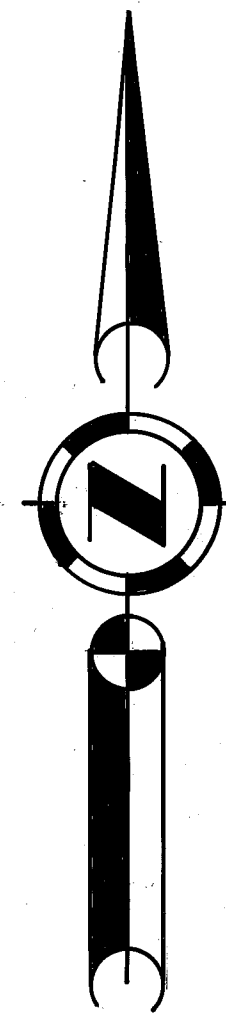
LEGEND

- — FOUND POINT AS NOTED
- — SET REBAR & CAP LS2843
- (M) — MEASURED INFORMATION
- (R₁) — RECORD INFORMATION PER. 2 M 32
- (R₂) — RECORD INFORMATION PER. 7 PM 90
- (R₃) — RECORD INFORMATION PER. 1 PM 42
- ⊙ — COMPUTED POINT OR VALUE

NOTES

ANY FURTHER DIVISION OF THE PARCELS SHOWN HEREIN WILL REQUIRE ROADS TO BE IMPROVED TO CITY OF PORTOLA STANDARDS.

THE 1" BOLTS SHOWN AS FOUND, ARE ORIGINAL LOT CORNERS OF PARKSIDE TERRACE SUBDIVISION FILED IN BOOK 2 MAPS, PAGE 32. THESE POINTS ARE DESCRIBED ON SAID MAP AS 3/4" IRON PIPE.



PARCEL MAP
FOR
OTTO DILGER & OTTILIE DILGER
A PORTION OF SECTION 36, T. 23 N., R. 13 E.,
M.D.B.&M.

CITY OF PORTOLA
PLUMAS COUNTY CALIFORNIA
SEPTEMBER, 1985

HAMBY SURVEYING INC.
LICENSED LAND SURVEYORS

P.O. BOX 1209
PORTOLA, CALIF.