

SCALE: 1" = 20'



**COUNTY TAX COLLECTOR'S CERTIFICATE**

I, Barbara J. Cokor, Tax Collector of the County of Plumas, State of California, do hereby certify that there are no tax liens against the Parcels, as shown hereon, for un-paid county, municipal, or local taxes or special assessments collected as taxes, except taxes or assessments not yet payable. Taxes or assessments which are a lien but not yet payable, are estimated to be in the amount of \$ 616.00.

Dated 6-23-87 Barbara J. Cokor by Danny Schuster  
Barbara J. Cokor  
Plumas County Tax Collector

**COUNTY RECORDER'S CERTIFICATE**

Filed this 6<sup>th</sup> day of July, 1987, at 3:10 PM in Book 9 of Parcel Maps, at Page 83, at the request of the County Engineer.

Ila Diggs  
County Recorder

By Bodo Cammack  
Deputy

**COUNTY SURVEYOR'S CERTIFICATE**

This map conforms with the requirements of the Subdivision Map Act and local ordinances.

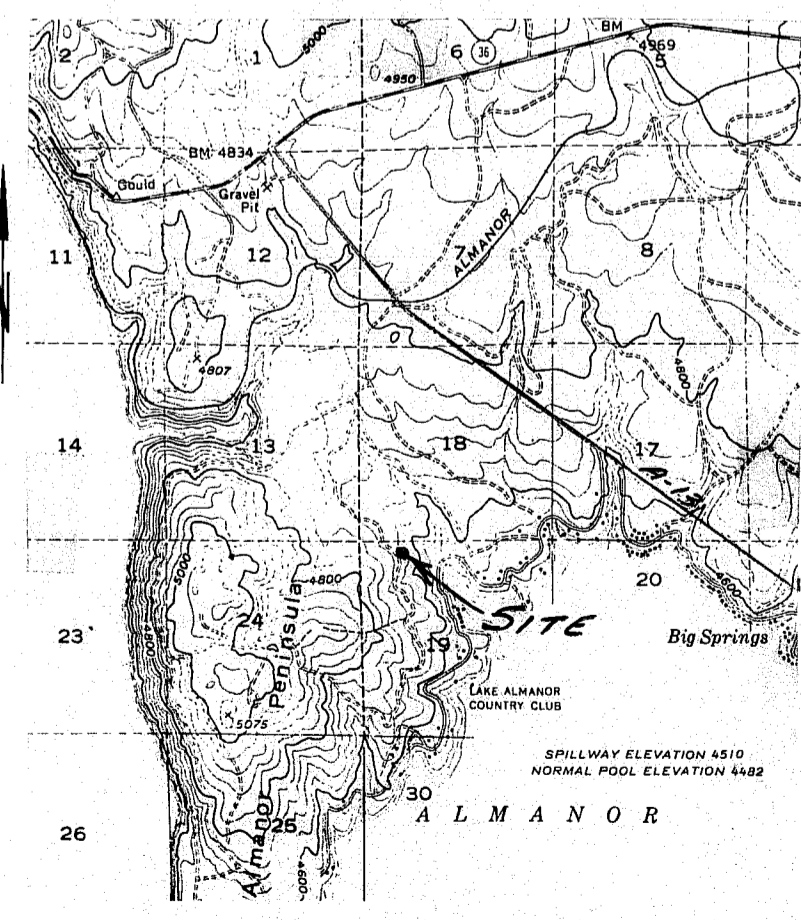
Dated 7/6/87 Lawrence J. Brock  
Lawrence J. Brock, R.C.E. 13528  
Plumas County Engineer

**SURVEYOR'S CERTIFICATE**

This map was prepared by me or under my direction and is based upon a field survey in conformance with the requirements of the Subdivision Map Act and local ordinances at the request of Randy J. Broglio on 4/2/86. All of the monuments shown hereon are of the character and occupy the positions indicated and are sufficient to enable the survey to be retraced. I hereby state that the parcel map procedures of the local agency have been complied with and that this parcel map conforms to the approved tentative map and the conditions of approval which were required to be fulfilled prior to filing this map, if any.

Vernon H. Templeton  
Vernon H. Templeton  
Surveyor

ARBUTUS DRIVE



- LEGEND**
- Found 3/4" iron pipe tagged "R.C.E. 7294" per R/M 3-2 except as noted.
  - Set 1/2" rebar with cap stamped "L.S. 4647".
  - ( ) Indicates record & measured per R/M 3-2.
  - [ ] Indicates record per R/M 3-2.

**NOTES**

1. A certificate of ownership is on file with the County Recorder in Book 463 of Official Records at page 294. The certificate was signed by Randy J. Broglio and stated that they consent to the preparation and recording of this map, and that they are the only persons whose consent is required to pass title to said land.

**PARCEL MAP FOR  
RANDY J. BROGLIO**

LOT 9, LAKE ALMANOR PINES SUBDIVISION UNIT NO. 1  
IN SECTION 19, T.28N., R.8E., M.D.B. & M.  
PLUMAS COUNTY, CALIFORNIA

**NST Engineering Associates, Inc**  
45 South Roby Street • Susanville, California 96130  
Telephone (916) 257-5173