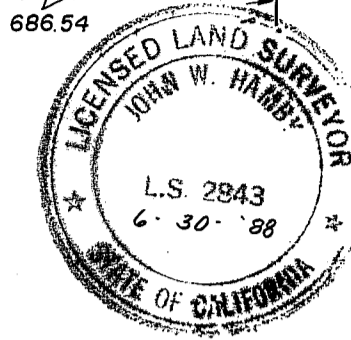


SURVEYOR'S CERTIFICATE

THIS MAP WAS PREPARED BY ME OR UNDER MY DIRECTION AND IS BASED UPON A FIELD SURVEY IN CONFORMANCE WITH THE REQUIREMENTS OF THE SUBDIVISION MAP ACT AND LOCAL ORDINANCE AT THE REQUEST OF DOUGLAS G. DAILEY NOVEMBER, 1986. ALL OF THE MONUMENTS SHOWN HEREON ARE OF THE CHARACTER AND OCCUPY THE POSITIONS INDICATED AND ARE SUFFICIENT TO ENABLE THE SURVEY TO BE RETRACED. I HEREBY STATE THAT THIS PARCEL MAP SUBSTANTIALLY CONFORMS TO THE APPROVED, OR CONDITIONALLY APPROVED TENTATIVE MAP, IF ANY.

C/4
Sec. 25



John W. Hamby
JOHN W. HAMBY L.S. 2843

COUNTY SURVEYOR'S CERTIFICATE

THIS MAP HAS BEEN EXAMINED IN ACCORDANCE WITH SECTION 8766 OF THE LAND SURVEYOR'S ACT THIS 20th DAY OF October 1987.

Lawrence J. Brook
LAWRENCE J. BROOK R.C.E. 13528
PLUMAS COUNTY SURVEYOR

COUNTY RECORDER'S CERTIFICATE

FILED THIS 20th DAY OF October, 1987, AT 1:30 PM IN BOOK 9 OF PARCEL MAPS AT PAGE 91, AT THE REQUEST OF THE COUNTY ENGINEER.

SEE: \$ 500
FILE No. 3389

ILA DIGGS, COUNTY RECORDER
Beth Cammack
DEPUTY

COUNTY TAX COLLECTOR'S CERTIFICATE

I BARBARA J. COATES TAX COLLECTOR OF THE COUNTY OF PLUMAS, STATE OF CALIFORNIA, DO HEREBY CERTIFY THAT THERE ARE NO TAX LIENS AGAINST THE PARCELS SHOWN HEREON FOR UNPAID COUNTY, MUNICIPAL OR LOCAL TAXES OR SPECIAL ASSESSMENTS COLLECTED AS TAXES, EXCEPT TAXES OR ASSESSMENTS NOT YET PAYABLE. TAXES OR ASSESSMENTS WHICH ARE A LIEN BUT NOT YET PAYABLE ARE ESTIMATED TO BE IN THE AMOUNT OF \$ 424.00

DATED: 10-12-87

Barbara J. Coates by Henry Schroeder
BARBARA J. COATES
PLUMAS COUNTY TAX COLLECTOR

CONCURRENT MAP OWNERSHIP STATEMENT

A Certificate of Ownership is on file with the County Recorder in Book 469 of Official Records at Page 1274. The certificate was signed by Douglas G. & Bonnie M. Dailey, and stated that they consent to the preparation and recording of this map.

Conditions of Approval and Plumas County Code requirements are on file with the County Recorder in Book 469 of Official Records at Page 1275.

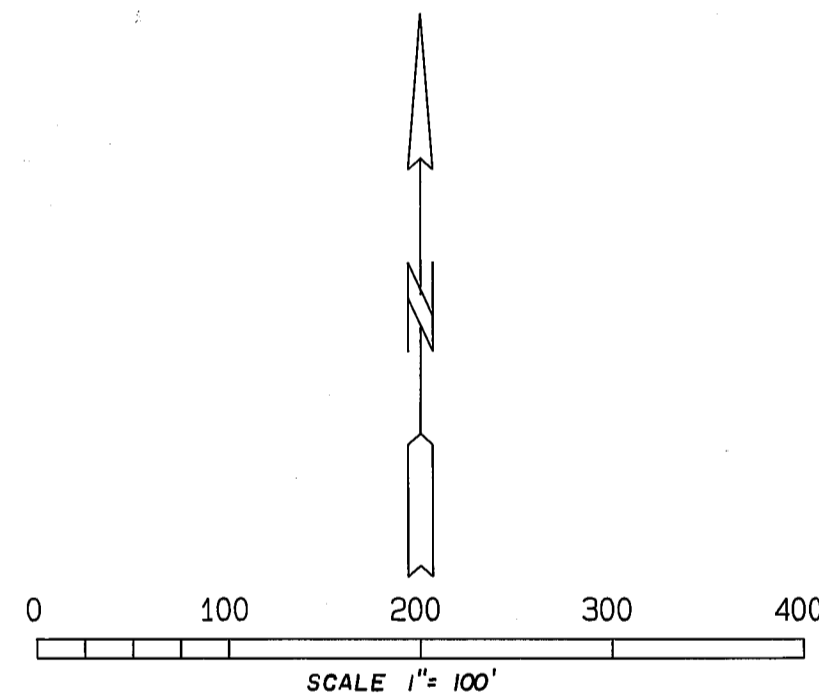
NOTE: This map is a division of parcels 1 & 4 of 9 PM 58.

BASIS OF BEARING

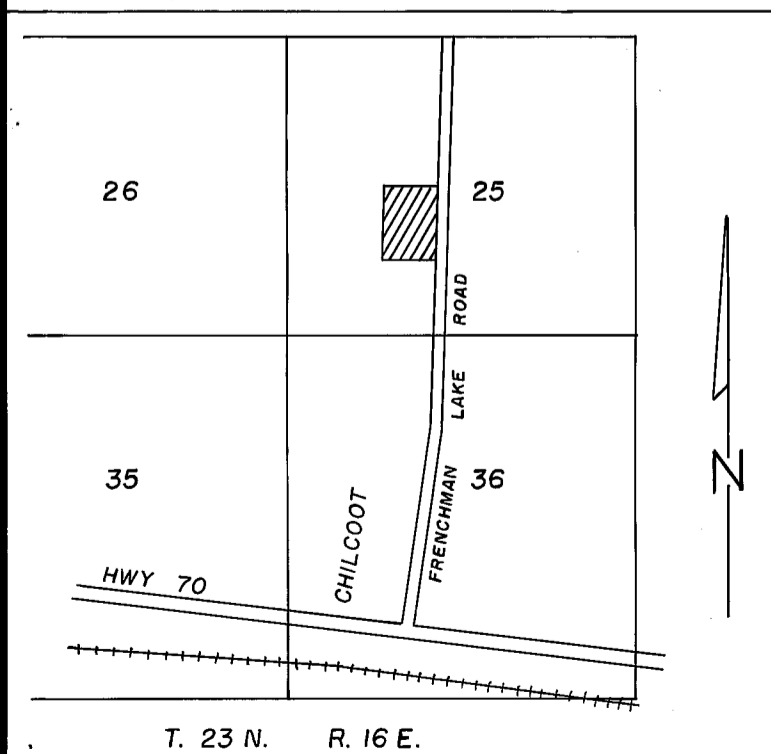
THE BASIS OF BEARING IS THE EAST LINE OF PARCEL SHOWN AS N 02° 12' 27" E ON PARCEL MAP FILED IN BOOK 9 OF PARCEL MAPS AT PAGE 58, PLUMAS COUNTY RECORDS.

LEGEND

- PROPERTY LINE
- - - ROAD or UTILITY EASEMENT
- ⊙ FOUND 2" BRASS DISC stamped 1/16 L.S. 3536
- FOUND 1/2" REBAR with ALUM. CAP L.S. 2843
- ⊕ SET 1/2" REBAR with PLASTIC CAP L.S. 2843
- SET 5/8" REBAR with ALUM. CAP L.S. 2843
- P.U.E. PUBLIC UTILITY EASEMENT
- (R & M) RECORD PER 9 P.M. 58 and MEASURED

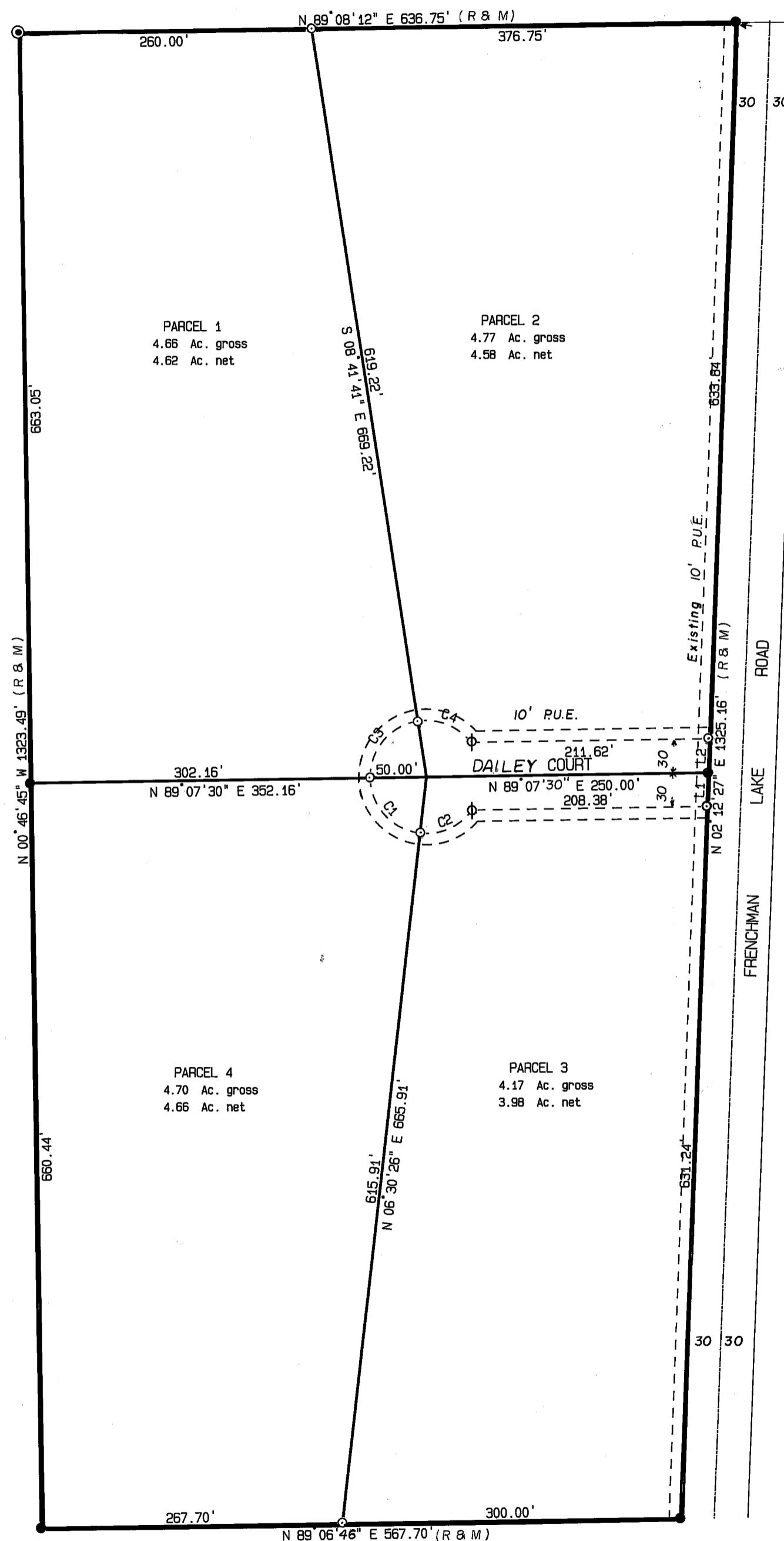


LOCATION MAP N.T.S.



CURVE	DELTA ANGLE	RADIUS	ARC LENGTH
C1	82° 37' 04"	50.00	72.10
C2	60° 31' 02"	50.00	52.81
C3	82° 10' 49"	50.00	71.72
C4	60° 56' 59"	50.00	53.19

LINE	DIRECTION	DISTANCE
L1	N 02° 12' 27" E	30.04
L2	N 02° 12' 27" E	30.04



PARCEL MAP

FOR
DOUGLAS G. DAILEY et ux

Portion of the NE 1/4 of the SW 1/4 of Section 25
T. 23 N., R. 16 E., M.D.B. & M.
Plumas County - California
Scale 1 in. = 100 ft. May, 1987

HAMBY SURVEYING INC.
P.O. BOX 1209 ph. (916) 832-5571
PORTOLA, CALIFORNIA 96122