

LOCATION MAP
T24N R9E

SURVEYOR'S CERTIFICATE

This map was prepared by me or under my direction and is based upon a field survey in conformance with the requirements of the Subdivision Map Act and Local Ordinance at the request of Robert Wemmer in August 1988. All of the monuments shown hereon are of the character and occupy the positions indicated and are sufficient to enable the survey to be retraced. I hereby state that this parcel map substantially conforms to the approved or conditionally approved tentative map, if any.

Clifford R. Brown
Clifford R. Brown RCE 22836

COUNTY SURVEYOR'S CERTIFICATE

This map conforms with the requirements of the Subdivision Map Act and Local Ordinance.

Dated Oct. 20, 1988

Lawrence J. Brock
by *R. Tom Shuster RCE 30515*
Lawrence J. Brock RCE 13528
Plumas County Surveyor

COUNTY TAX COLLECTOR'S CERTIFICATE

I, Barbara J. Coates, Tax Collector of the County of Plumas, State of California, do hereby certify that there are no tax liens against the Parcels, as shown hereon, for unpaid state, county, municipal, or local taxes or special assessments collected as taxes, except taxes or assessments not yet payable. Taxes or assessments which are a lien but not yet payable, are estimated to be in the amount of None.

Dated 10/25/88

Barbara J. Coates
By: *Benny Dehodes*
Barbara J. Coates
Plumas County Tax Collector

COUNTY RECORDER'S CERTIFICATE

Filed this 25th day of OCTOBER, 1988, at 11:00 A.M. in Book 9 of Parcel Maps, at page 116, at the request of the County Engineer.

Fee \$5.00
File No. 3952

ILA DIGGS
County Recorder
by *Kathleen Williams*
Deputy

PARCEL MAP

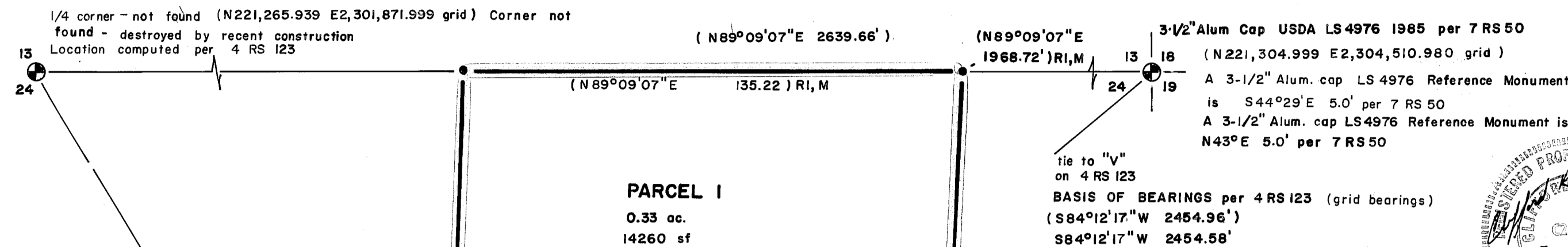
A division of two parcels within a portion of Section 24, T24N, R9E, MDBM, within East Quincy, Plumas County, California.

—FOR—
ROBERT and BARBARA WEMMER
PO Box 3393
Quincy, CA 95971 283-4253

Engineer: Cliff Brown Engineering & Survey
2335 Ponderosa
Quincy, CA 95971 283-3959

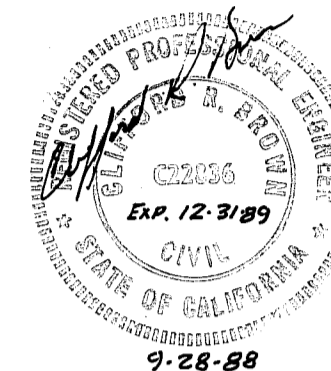
August 1988

Sheet 1 of 1

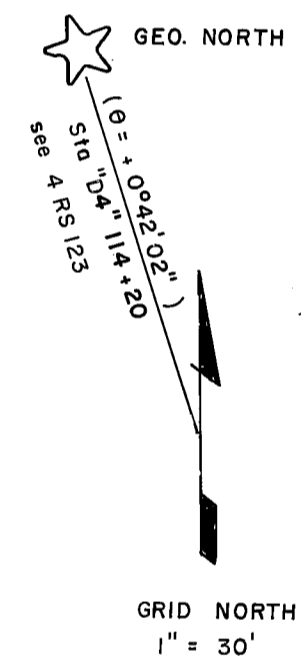


LEACHFIELD ESMT. DATA
A N89°09'07"E 105.00'
B N2°27'07"E 33.00'

3-1/2" Alum Cap USDA LS4976 1985 per 7 RS 50
(N221,304.999 E2,304,510.980 grid)
A 3-1/2" Alum. cap LS 4976 Reference Monument
is S44°29'E 5.0' per 7 RS 50
A 3-1/2" Alum. cap LS4976 Reference Monument is
N43°E 5.0' per 7 RS 50



LEGEND
● Set 1/2" rebar RCE 22836 or as noted
⊕ Section corner as noted
■ HWY Monument per 4 RS 123
() Record per 4 RS 123
(R) Record per deed 406 OR 561
M Measured
NOTE: GRID Distances on 4 RS 123 converted to ground distances this map.
To obtain grid distance, divide by 1.000150



(N43°19'34"W 287.06')
Tie to 1/4 Corner
(N2°E 75.56') M
Tie to Section Corner
(S88°E 100.06') M
Point "V" 4 RS 123
(S2°00'00"W 0.057' from D4 130-00.08 POT)
(N 221,057.145 E2,302,068.936 grid)
Fd. Standard brass disk in Concrete per 4 RS 123
⊕ HWY 70 per 4 RS 123, 124

SUPPLEMENTAL INFORMATION: A Supplemental Information Sheet & Certificate of Ownership is on file with the County Recorder in Book 490 of Official Records at page 297. The certificate was signed by Robert & Barbara Wemmer and stated that they consent to the preparation and recording of this map.