

SURVEYOR'S STATEMENT

This map was prepared by me or under my direction and is based upon a field survey in conformance with the requirements of the Subdivision Map Act and local ordinance at the request of Stanford R. Womack & Betty Ann Womack on October 14, 1988. I hereby state that this parcel map substantially conforms to the approved or conditionally approved tentative map, if any. All the monuments shown hereon are of the character and occupy the positions indicated and are sufficient to enable the survey to be retraced.

John W. Hamby
John W. Hamby L.S. 2843

CITY ENGINEER'S STATEMENT

This map conforms with the requirements of the Subdivision Map Act and local ordinance.

Dated 1/20/89
Larry Fites
Larry Fites R.C.E. 13225
Acting City Engineer

COUNTY RECORDER'S STATEMENT

Filed this 25th day of January, 1989 at 10:55 A.M. in Book 9 of Parcel Maps, at page 125, at the request of the city clerk.

Fee \$5.00
File No. 510
By *Dede Cammack*
Dede Cammack
Deputy
Ila Diggs
County Recorder

COUNTY TAX COLLECTOR'S STATEMENT

I, Barbara J. Coates, Tax Collector of the County of Plumas, State of California, do hereby certify that there are no tax liens against the parcels shown hereon for unpaid state, county, municipal or local taxes or special assessments collected as taxes, except taxes or assessments not yet payable. Taxes or assessments which are a lien but not yet payable are estimated to be in the amount of NONE.

Dated 1-23-89
Barbara J. Coates
Barbara J. Coates
Plumas County Tax Collector

OWNER'S STATEMENT

A certificate of owners consent to the preparation and recording of this map is on file in the Plumas County Recorder's Office in Book 95 of Official Records at page 27.

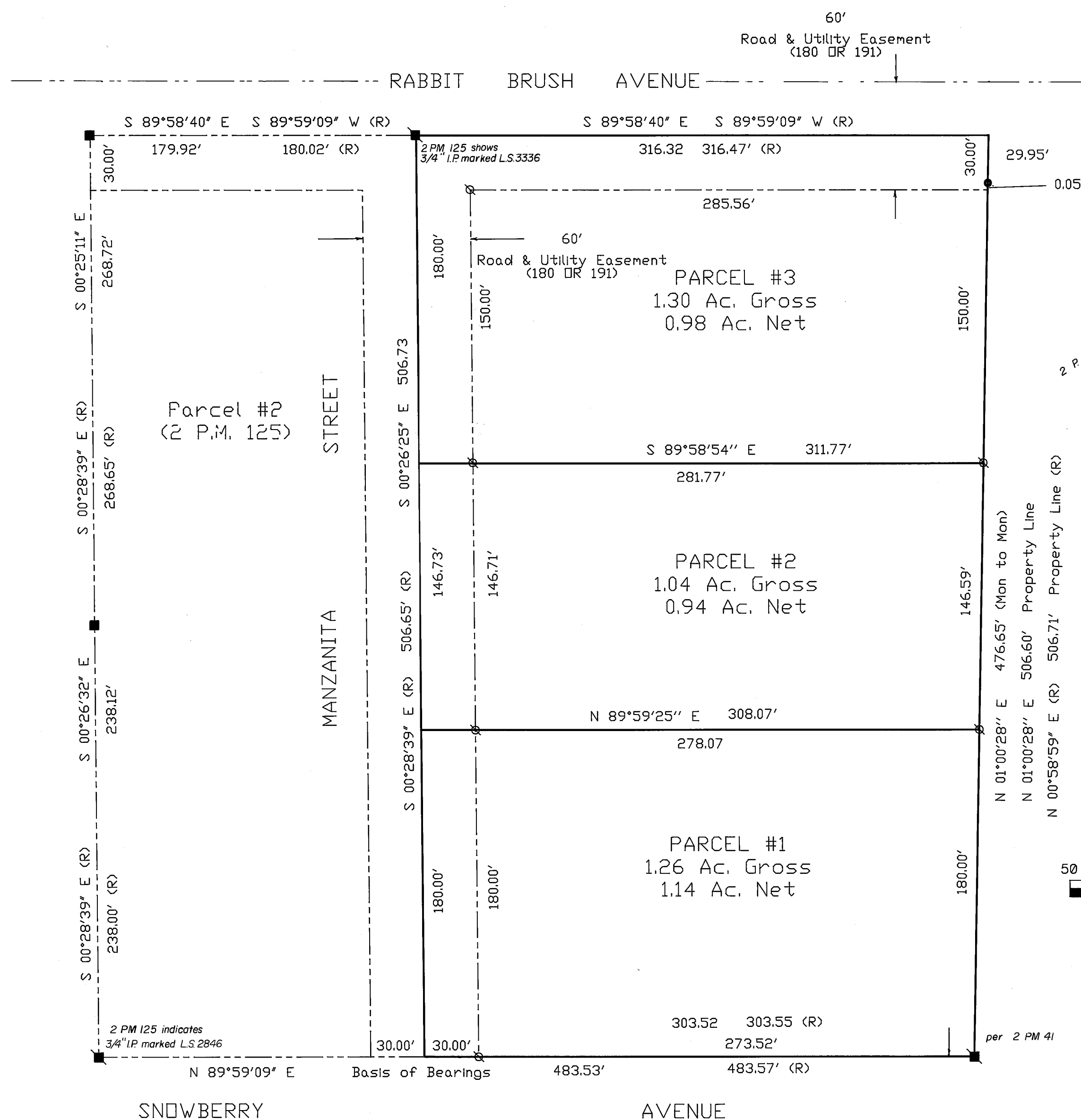
PARCEL MAP

FOR

Stanford R. Womack & Betty Ann Womack

A division of Parcel #1 (2 P.M. 125)
A portion of Section 36, T.23N., R.13E., M.D.M.
Portola - Plumas County - California
Scale 1"=50' Nov. 1988

HAMBY SURVEYING, INC.
P.O. Box 1209 ph.(916) 832-5571
PORTOLA, CA. 96122



LEGEND

- FOUND 3/4" I.P. (open) set tag L.S. 2843
- FOUND 3/4" I.P. RCE 7294
- FOUND 3/4" I.P. L.S. 3336
- ⊗ SET 5/8" Rebar & Plastic Cap LS 2843
- (R) RECORD per 2 P.M. 125

Basis of Bearings

The Southerly Line of Parcels 1 & 2, shown as S 89°59'09" W in Book 2 of Parcel Maps, at Page 125, is the Basis of Bearings shown on this Map.