

COUNTY TAX COLLECTOR'S STATEMENT

I, Barbara J Coates, Tax Collector of the County of Plumas, State of California, do hereby certify that there are no tax liens against the parcels shown hereon for unpaid state, county, municipal or local taxes or special assessments collected as taxes, except taxes or assessments not yet payable. Taxes or assessments which are a lien but not yet payable are estimated to be in the amount of 0.

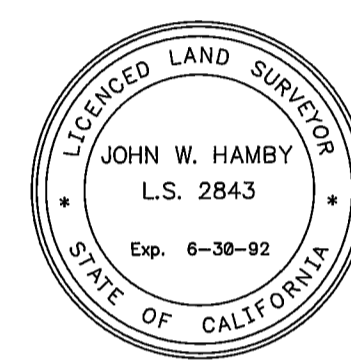
Dated: Feb. 15, 1991
Barbara J. Coates
Barbara J. Coates
Plumas County Tax Collector

OWNER'S STATEMENT

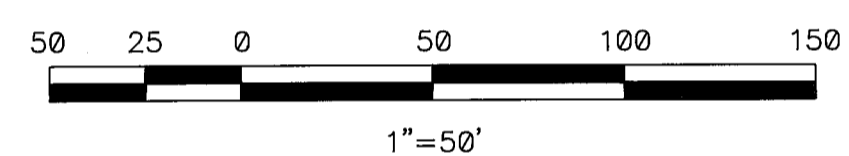
A Certificate of Ownership is on file with the County Recorder in Book 540 of Official Records at page 480. The certificate was signed by J. R. Oil Incorporated and stated that it consented to the preparation and recording of this map.

SURVEYOR'S STATEMENT

This map was prepared by me or under my direction and is based upon a field survey in conformance with the requirements of the Subdivision Map Act and local ordinance at the request of Sam Parham on July 12, 1989. All the monuments shown hereon are of the character and occupy the positions indicated and are sufficient to enable the survey to be retraced. I hereby state that this parcel map substantially conforms to the approved or conditionally approved tentative map, if any.



John W. Hamby
John W. Hamby L.S. 2843



COUNTY SURVEYOR'S STATEMENT

This map conforms with the requirements of The Subdivision Map Act and Local Ordinance.

Dated: 2-15-91
Lawrence J. Brock
Lawrence J. Brock R.C.E. 13528
LICENSE EXPIRES 3-31-93

COUNTY RECORDER'S STATEMENT

Filed this 15th day of FEBRUARY, 1991 at 3:30 P.M. in Book 10 of Parcel Maps, at page 24 at the request of the County Engineer.

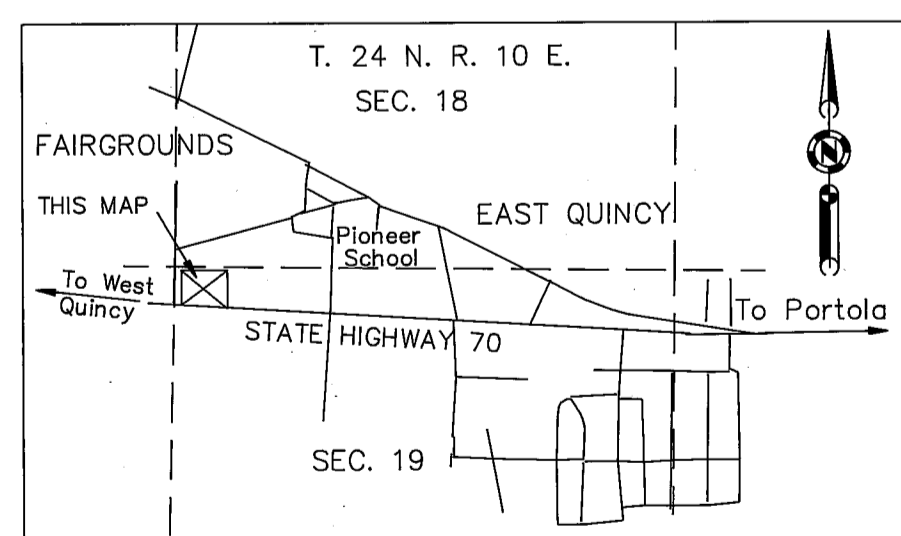
JUDITH WELLS
County Recorder
Fee \$ 7.00
By: [Signature] Deputy
File No. 1156

Record corner 3 1/2" Alum. cap stamped
T 24 N
R 9 E R 10 E
N 1/16
S 24 S 19
LS 4976
1985

NOTE A
The position of this point was determined by the extension of the Right of Way line as located from the found 1/2" I.P. tagged LS 3297 and the found Dist. Sur. Eng. T-bar, which bearings were rotated to the basis of this survey. The Distance calculated per 201 O.R. 10 is 255.65 feet from the Northwest corner of Section 19 to the North Right of Way line of State Highway 70, it measures 255.66 feet using said found monuments.

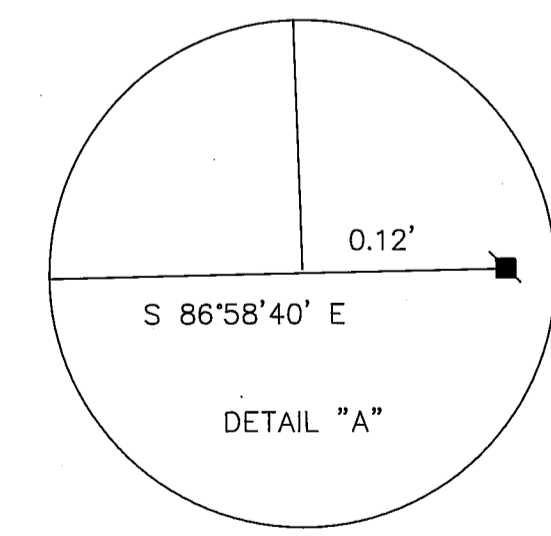
LEGEND

- SET 5/8" Rebar and Alum. Cap LS 2843
- FOUND T-Bar stamped Dist. Eng. State of Calif. and set tag LS 2843
- RECORD corner as per 7 RS 50
- FOUND 1/2" IP tagged LS 3297 per 4 RS 124
- (R1) RECORD per 4 RS 124
- (R2) RECORD per 7 RS 50
- Centerline of 40' P.G. & E. easement per 201 O.R. 21



BASIS OF BEARINGS

The bearings of this Survey are based upon a line between the Found Northwest corner of Section 19 and the Found Northwest 1/16 corner of Section 19, calculated to be S 43°01'42" E, 1793.87 feet per 7 RS 50 and measured the same.



PARCEL MAP

FOR
J. R. OIL INCORPORATED
A portion of Lot 8 & Lot 22, located in the NW 1/4 of Section 19, T. 24 N., R. 10 E., M.D.M. Plumas County, California
SEPTEMBER, 1989 SCALE 1" = 50'

HAMBY SURVEYING, INC.
P.O. Box 1209 ph.(916) 832-5571
PORTOLA, CA. 96122