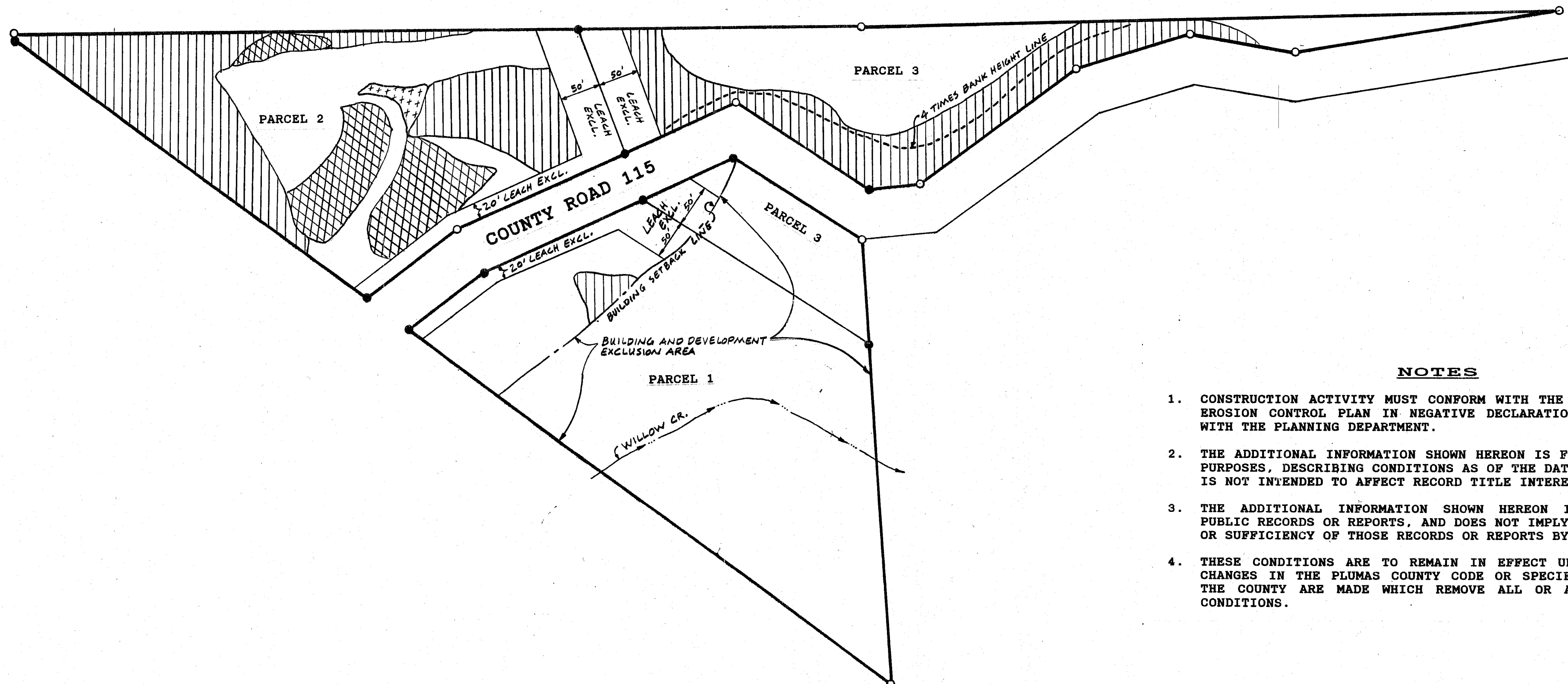


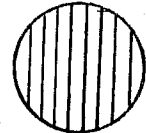
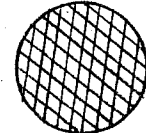
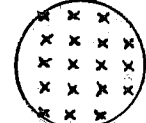
SCALE: 1" = 100'

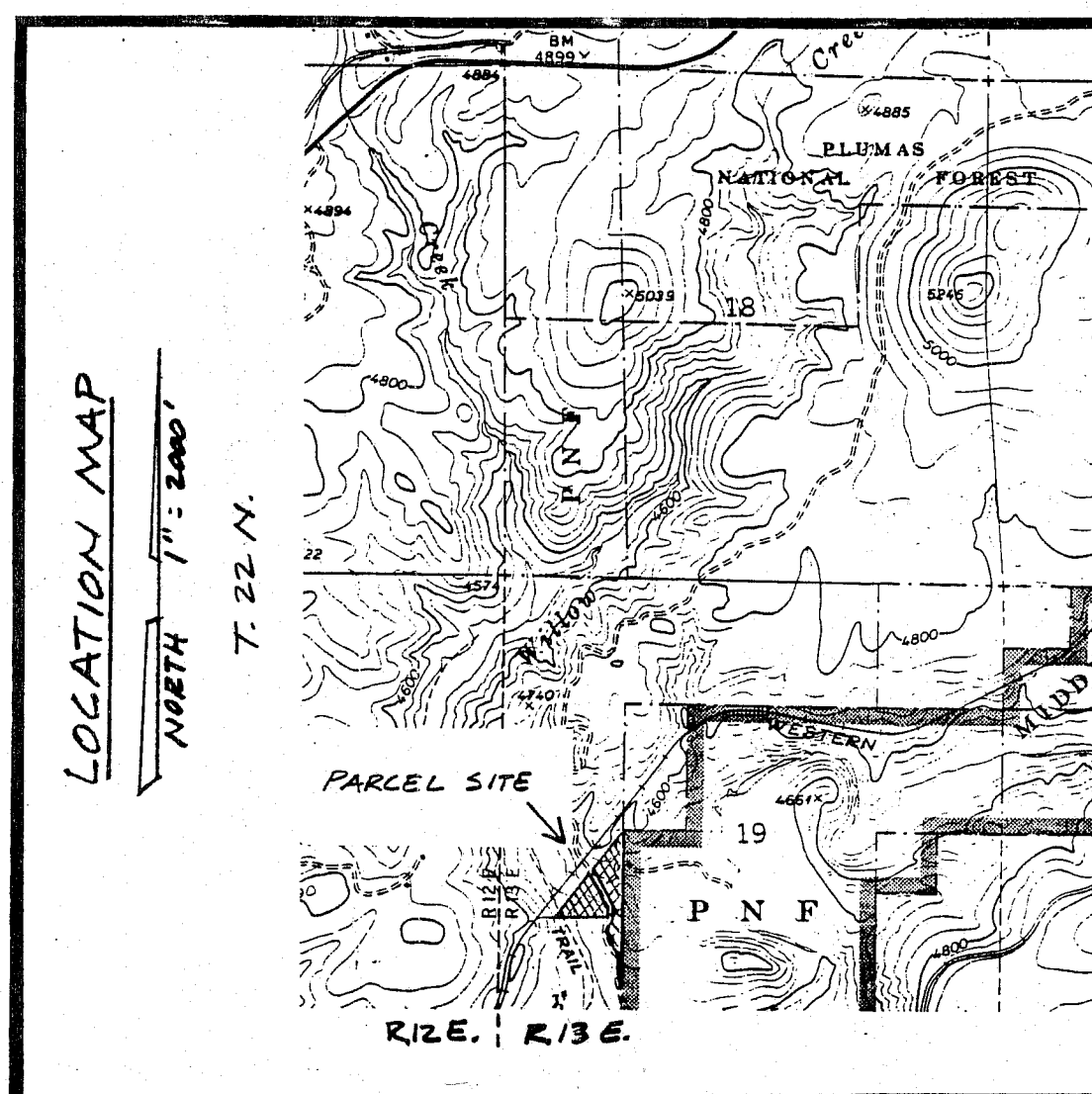


NOTES

1. CONSTRUCTION ACTIVITY MUST CONFORM WITH THE ELEMENTS OF THE EROSION CONTROL PLAN IN NEGATIVE DECLARATION #380, ON FILE WITH THE PLANNING DEPARTMENT.
2. THE ADDITIONAL INFORMATION SHOWN HEREON IS FOR INFORMATIONAL PURPOSES, DESCRIBING CONDITIONS AS OF THE DATE OF FILING, AND IS NOT INTENDED TO AFFECT RECORD TITLE INTEREST.
3. THE ADDITIONAL INFORMATION SHOWN HEREON IS DERIVED FROM PUBLIC RECORDS OR REPORTS, AND DOES NOT IMPLY THE CORRECTNESS OR SUFFICIENCY OF THOSE RECORDS OR REPORTS BY THE PREPARER.
4. THESE CONDITIONS ARE TO REMAIN IN EFFECT UNTIL APPROPRIATE CHANGES IN THE PLUMAS COUNTY CODE OR SPECIFIC APPROVALS BY THE COUNTY ARE MADE WHICH REMOVE ALL OR A PART OF THESE CONDITIONS.

LEACH EXCLUSION LEGEND

-  SLOPES 30% AND GREATER.
-  FILL SLOPES.
-  CUT SLOPES.



**ADDITIONAL INFORMATION MAP
PARCEL MAP**

FOR
CURTIS HARTWIG
BEING A PORTION OF THE WEST 1/2 OF THE
SOUTHWEST QUARTER OF SECTION 19
T. 22 N., R. 13 E., M.D.M.
PLUMAS COUNTY, CALIFORNIA
A SUBDIVISION OF
PARCEL 4, PER 8 PM 94
BY
LARRY FITES ENGINEERING

P.O. BOX 20308
GRAEAGLE, CALIFORNIA 96103
R.C.E. 13225

FEBRUARY 1991

SHEET 2 OF 2