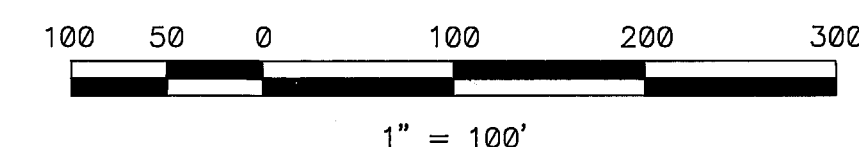
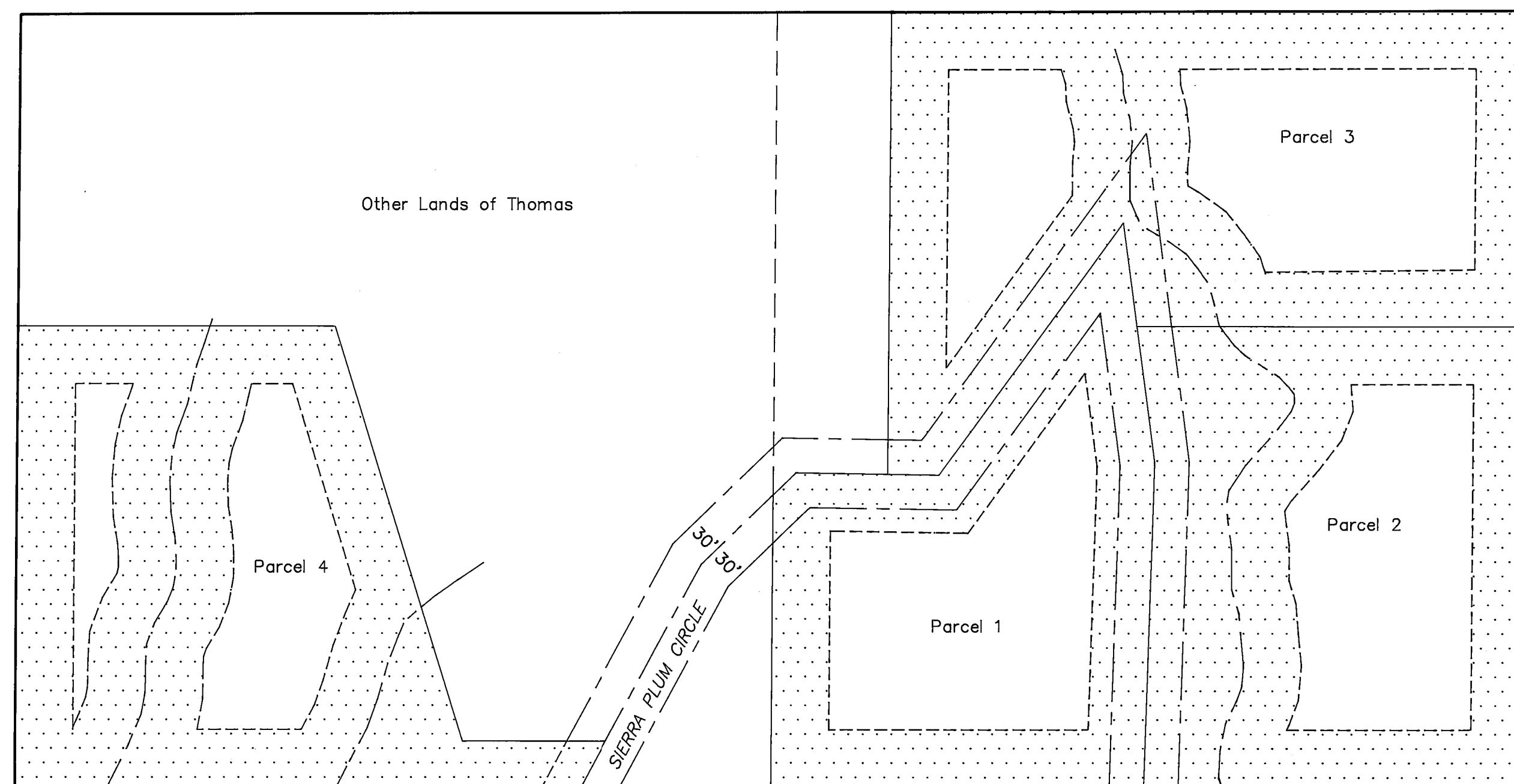


LOCATION MAP



NOTES

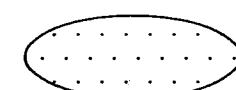
THE PROPERTY SHOWN HEREON IS SUBJECT TO A PLANNED DEVELOPMENT PERMIT WHICH IS RECORDED IN BOOK 546 OF OFFICIAL RECORDS AT PAGE 302. FUTURE DEVELOPMENT OF THIS PROPERTY WILL BE SUBJECT TO THE CONDITIONS OF SAID PERMIT.

EROSION CONTROL MEASURES HAVE BEEN COMPLIED WITH IN ACCORDANCE WITH THE EROSION CONTROL PLAN ON FILE IN THE OFFICE OF THE PLUMAS COUNTY ENGINEER.

SIERRA PLUM CIRCLE, AS SHOWN HEREON, IS A PRIVATE EASEMENT, NOT SUBJECT TO IMPROVEMENT OR MAINTENANCE BY PLUMAS COUNTY. SUCH EASEMENTS WILL NOT BECOME EFFECTIVE UNLESS AND UNTIL RESERVATIONS AND GRANTS ARE INCLUDED IN THE RESPECTIVE DEEDS.

A ROAD MAINTENANCE AGREEMENT IS ON FILE IN BOOK 546 OF OFFICIAL RECORDS AT PAGE 303, PLUMAS COUNTY RECORDS.

LEGEND



DESIGNATED LEACH EXCLUSION AREAS

Additional Information Sheet for

Howard D. & Karen J. Thomas

Parcels 1 & 2 of 2 PM 5, located in the S 1/2 of Section 25, T. 23 N., R. 13 E., M.D.M.

Plumas County, California

JUNE, 1990 - SCALE 1" = 100'

HAMBY SURVEYING, INC.
P.O. Box 1209 ph.(916) 832-5571
PORTOLA, CA. 96122