

Basis of Bearings

The Basis of Bearings of this map is based upon a Solar Observation taken from a traverse point which bears N07°32'31"E, 381.92' from the Southeast corner of Section 27

Detail "A"
N.T.S.

Note: From evidence found during survey measurements were taken to the face of Bearing trees in original GLO survey

Found Bearing Trees

29" Pine blazed & scribed S56°08'E, 29.1' (GLO 16" Pine S55°E, 43 lks)
36" Fir blazed N41°30'W, 4.9' (GLO 26" Spruce N35°W, 6lks)
Section corner set at base of 32x12x14 stone near stone mound (GLO 36x18x18 stone)

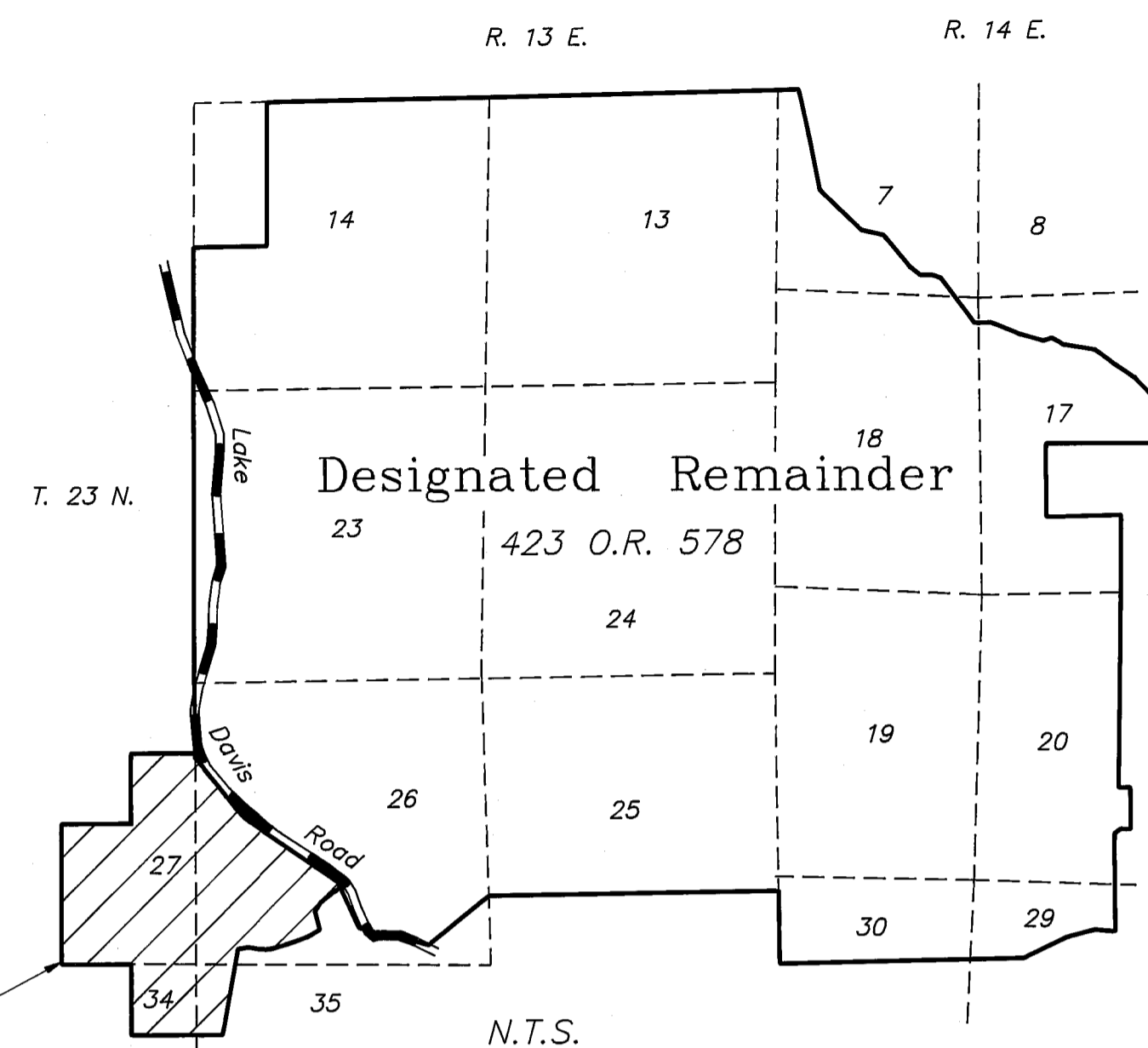
Set BT tag 10" Pine S01°50'W, 30.4'
Set BT tag 20" Pine N46°49'E, 7.4'
1/4 corner set by single proportion

Set Bearing Tree Tags on following:
40" Cedar S12°08'W, 237.2'
19" Pine S74°48'W, 82.8'
16" Pine N30°15'W, 149.3'
Section corner set by double proportion

Section corner set from Bearing Tree 37" Pine stump blazed & scribed N51°00'E, 15.8' (N51'E, 22 lks GLO)
Also Found 32" Pine S12°51'W, 43.3' (BT tag N14°E, 67 lks)
15" Pine N53°52'W, 57.5' (BT tag S58°E, 88 lks)
Note: From evidence found during survey measurements were taken to the face of Bearing trees in original GLO survey

Tangent table for Lake Davis Road

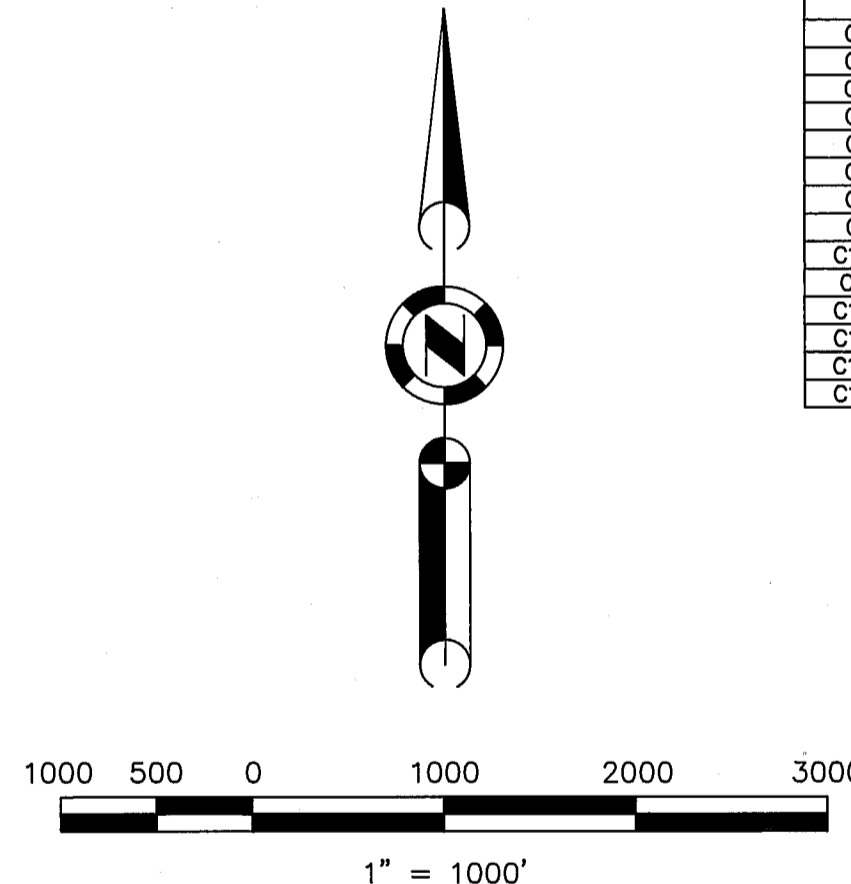
| LINE | DIRECTION | DISTANCE | DIRECTION | DISTANCE |
|------|-------------|----------|-------------|----------|
| L1 | S00°37'47"W | 3.02' | S00°20'49"W | 3.02' |
| L2 | S18°01'24"E | 492.42' | S19°00'00"E | 492.33' |
| L3 | S05°34'36"W | 382.65' | S04°36'00"W | 382.58' |
| L4 | S02°57'24"E | 1373.00' | S03°56'00"E | 1372.74' |
| L5 | N18°36'36"E | 277.89' | N17°38'00"E | 277.84' |
| L6 | N03°13'24"W | 405.22' | N04°12'00"W | 405.14' |
| L7 | S15°42'36"W | 384.69' | S14°44'00"W | 384.62' |
| L8 | S11°46'36"W | 842.93' | S10°48'36"W | 842.77' |
| L9 | S05°45'24"E | 534.36' | S06°44'00"E | 534.26' |
| L10 | S39°03'24"E | 1108.01' | S40°02'00"E | 1107.80' |
| L11 | S55°51'24"E | 2048.35' | S56°50'00"E | 2047.97' |
| L12 | S15°31'24"E | 453.11' | S16°30'30"E | 453.03' |
| L13 | S81°17'24"E | 444.29' | S82°16'00"E | 444.21' |
| L14 | S23°11'24"E | 200.67' | S24°10'00"E | 200.63' |
| L15 | S38°08'19"E | 412.43' | S39°06'55"E | 412.35' |
| L16 | N04°56'52"W | 1364.65' | N05°55'28"W | 1364.40' |



This Parcel Map

Curve table for Lake Davis Road

| CURVE | Measured | | | Record per 178 O.R. 710 (Grid) | | |
|-------|----------|----------|-----------|--------------------------------|----------|-----------|
| | RADIUS | LENGTH | DELTA | RADIUS | LENGTH | DELTA |
| C1 | 3000.56' | 206.96' | 03°57'07" | 3000.00' | 206.92' | 03°57'07" |
| C2 | 2000.37' | 823.95' | 23°36'00" | 2000.00' | 823.80' | 23°36'00" |
| C3 | 1000.19' | 148.96' | 08°32'00" | 1000.00' | 148.94' | 08°32'00" |
| C4 | 350.07' | 131.77' | 21°34'00" | 350.00' | 131.74' | 21°34'00" |
| C5 | 350.07' | 133.40' | 21°50'00" | 350.00' | 133.37' | 21°50'00" |
| C6 | 350.07' | 115.68' | 18°56'00" | 350.00' | 115.66' | 18°56'00" |
| C7 | 3000.56' | 205.99' | 03°56'00" | 3000.00' | 205.95' | 03°56'00" |
| C8 | 1000.19' | 306.07' | 17°32'00" | 1000.00' | 306.01' | 17°32'00" |
| C9 | 500.09' | 290.65' | 33°18'00" | 500.00' | 290.60' | 33°18'00" |
| C10 | 1000.19' | 293.27' | 16°48'00" | 1000.00' | 293.22' | 16°48'00" |
| C11 | 600.11' | 422.45' | 40°20'00" | 600.00' | 422.37' | 40°20'00" |
| C12 | 400.07' | 459.22' | 65°46'00" | 400.00' | 459.14' | 65°46'00" |
| C13 | 1500.28' | 1521.34' | 58°06'00" | 1500.00' | 1521.05' | 58°06'00" |
| C14 | 1000.19' | 260.95' | 14°56'55" | 1000.00' | 260.90' | 14°56'55" |
| C15 | 1000.19' | 171.29' | 09°48'45" | 1000.00' | 171.26' | 09°48'45" |



LEGEND

- FOUND point as described
- SET Standard USFS Aluminum Cap for 1/4 corner stamped LS 2843
- FOUND 1/2" Rebar with Aluminum Cap LS 2843 per 9 RS 50
- SET 5/8" Rebar with Aluminum Cap LS 2843
- Computed point
- RECORD corner per 9 RS 50
- (R1) RECORD per 9 RS 50
- (R2) RECORD per 5 RS 110
- (R3) RECORD per 6 RS 86
- (R4) RECORD per 178 OR 710
- R/W Easement for private road and Utility purposes
- O.A. Overall distance

PARCEL MAP
for
Francis L. Carmichael
Portion of Sections 26, 27, 34 & 35
T. 23 N., R. 13 E., M.D.M.
Plumas County ~ California
Scale 1" = 1000' September, 1993

Hamby Surveying Inc.
P.O. Box 1209
Portola, CA 96122
(916) 832-5571