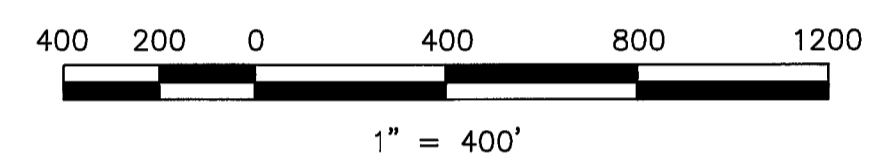
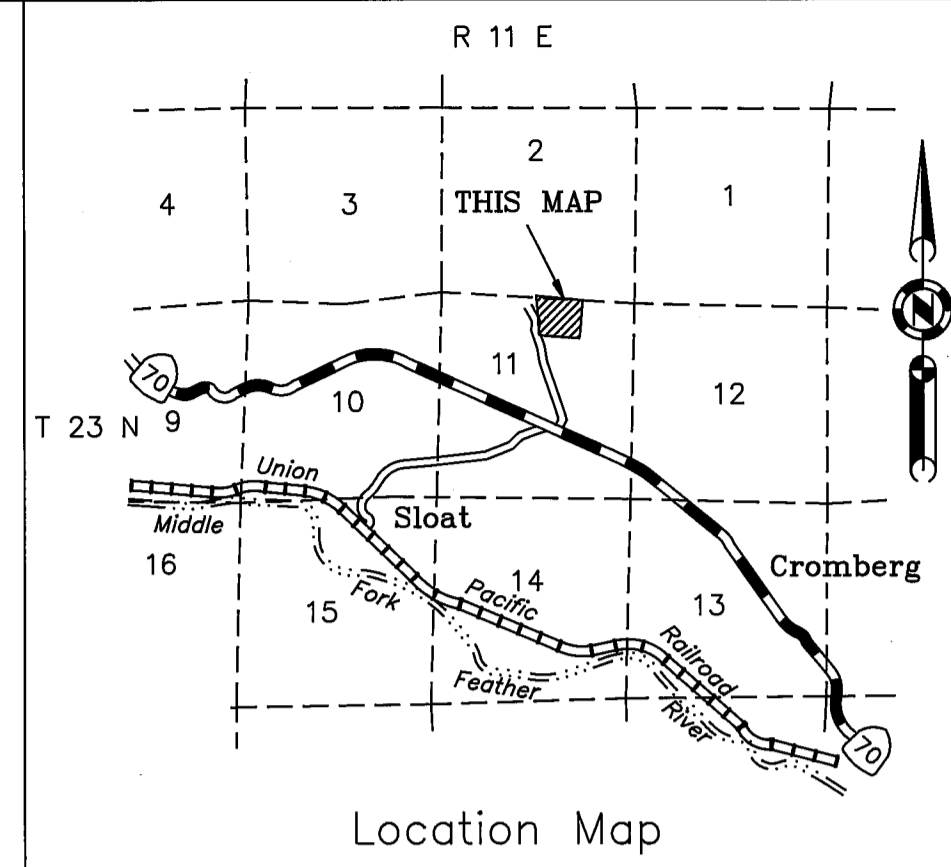


- Bearing Trees Found**
- Old 8" Oak on ground N43°29'W, 21.9' with K tag (N40°W 21')
 - 16" Pine B&S N45°02'W 42.79 ft. K tag (S 45E 65 lks)
 - 24" Pine B&S N31°16'E 30.64 ft. K tag (S31W 47.5 lks)
 - 12" Fir B&S N59°42'E 12.22 ft. K tag (S61 1/2W 20 lks)
 - 10" Cedar B&S S48°03'E 5.0 ft. K tag (N52W 7 lks)
 - 12" Pine B&S S47°18'E 13.90 ft. K tag (N49W 21 lks)
 - 10" Pine B&S S36° 10'W 13.89ft. K tag (N36E 21 lks.)
 - 15" Cedar B&S S25°33'W 36.87 ft. K tag (N 25 1/2E 57 lks.)



NOTE
The property shown hereon is subject to a Road Maintenance Agreement which is recorded in Book 622 of Official Records at page 608.

- LEGEND**
- FOUND point as described
 - SET 5/8" Rebar & Aluminum Cap LS 2843
 - FOUND Rebar with Plastic Cap RCE 22836
 - Computed corner
 - (R1) RECORD per 7 RS 56
 - (R2) RECORD per 4 R.S. 32
 - (R3) RECORD per 1 P.M. 18
 - (R4) RECORD per 3 R.S. 92
 - (R5) RECORD per 87 Deeds 279
 - B&S Blazed & Scribed

PARCEL MAP
for
WILLIAM E. NELSON, LUCILLE L. NELSON
and **LAVADA NELSON**
A portion of the NE 1/4 of Section 11
T. 23 N., R. 11 E., M.D.M.
PLUMAS COUNTY — CALIFORNIA
SCALE 1" = 400' OCTOBER, 1993

HAMBY SURVEYING INC.
P.O. Box 1209
PORTOLA, CA. 96122
Phone 916-832-5571