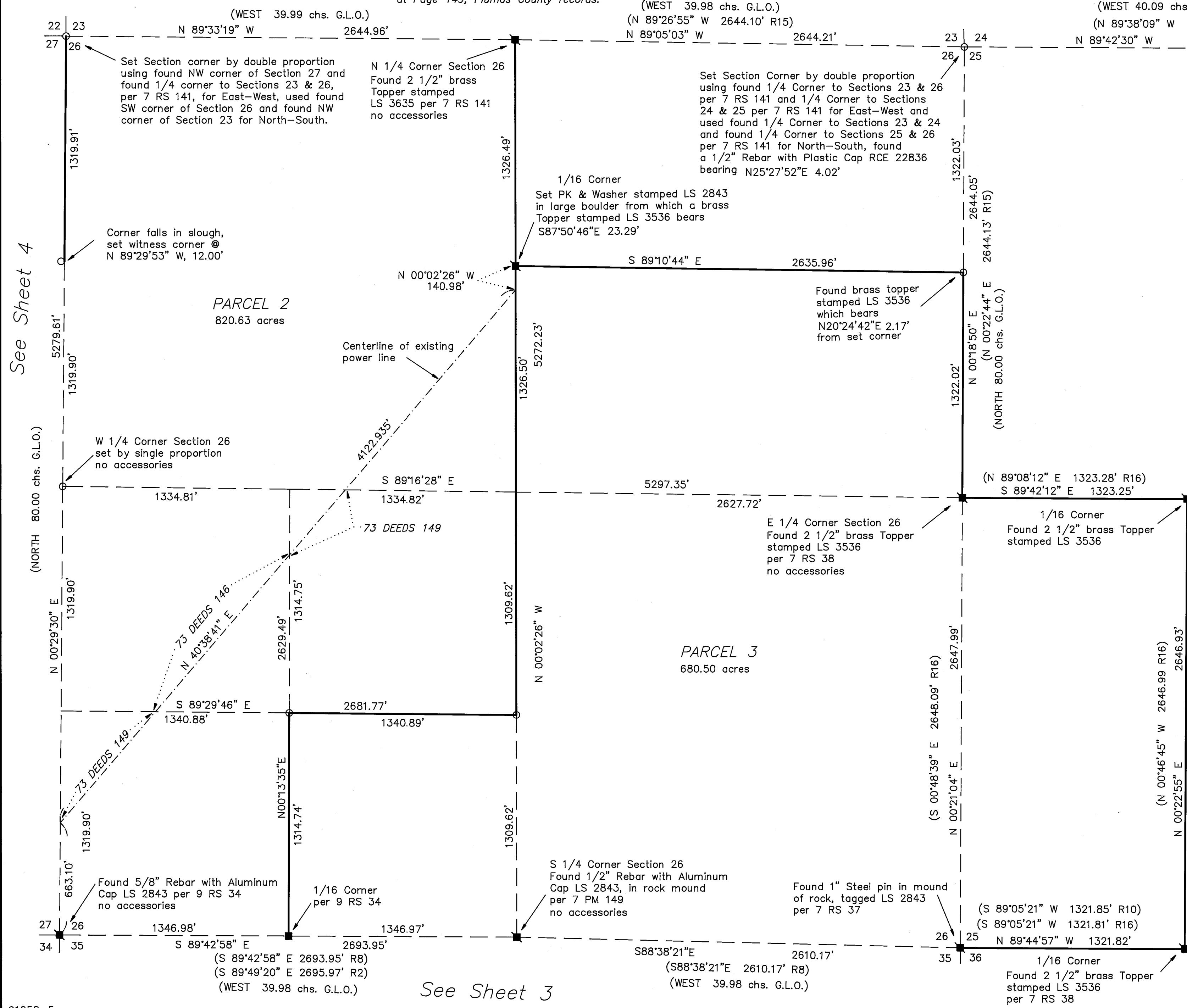


See Sheet 6

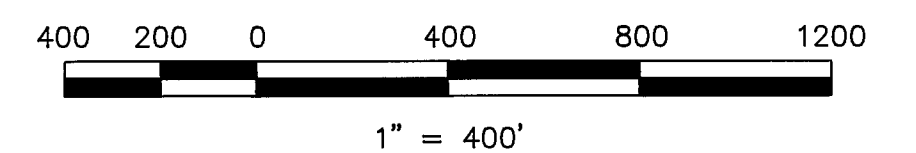
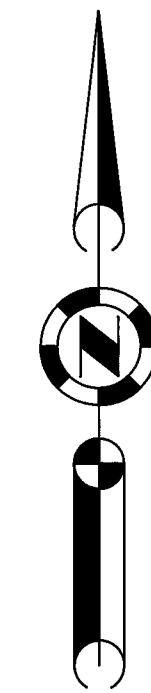
Basis of Bearings

The Basis of Bearings of this map is the West line of the SW 1/4 of Section 35 shown as S 00°17'38" W in Book 7 of Parcel Maps at Page 149, Plumas County records.



LEGEND

- FOUND point as described
- FOUND Rebar with Aluminum Cap LS 2843
- FOUND Rebar with Plastic Cap LS 2843
- FOUND 6"x 6" State Highway Monument
- SET 5/8" Rebar & Aluminum Cap LS 2843
- SET 1/2" Rebar & Aluminum Cap LS 2843
- Computed point
- (R1) RECORD & MEASURED per 9 RS 34 unless shown otherwise
- (R2) RECORD per 7 PM 149
- (R3) RECORD per 69 DEEDS 13
- (R4) RECORD per 80 DEEDS 200
- (R5) RECORD per 80 DEEDS 27
- (R6) RECORD per 69 DEEDS 98
- (R7) RECORD per 8 PM 42
- (R8) RECORD per 65 Deeds 101 & 102
- (R9) RECORD per 7 RS 37
- (R10) RECORD per 5 PM 66
- (R11) RECORD per 4 RS 136
- (R12) RECORD per 5 RS 9
- (R13) RECORD per 8 PM 66
- (R14) RECORD per 69 DEEDS 16
- (R15) RECORD per 7 RS 141
- (R16) RECORD per 7 RS 38



PARCEL MAP

for Pitchfork Cattle Company, a Nevada Corporation

A portions of Sections 23, 25, 26, 27, 34 & 35, T. 23 N., R. 16 E., M.D.M. Plumas County, California March, 1992 Scale 1" = 400'

HAMBY SURVEYING, INC. P.O. Box 1209 ph.(916) 832-5571 PORTOLA, CA. 96122