

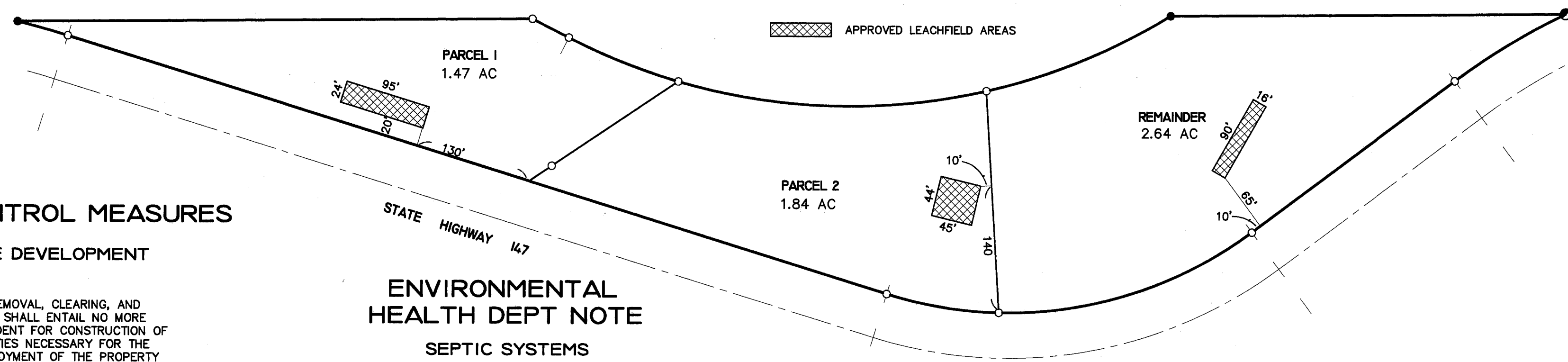
EROSION CONTROL MEASURES

HOMESITE DEVELOPMENT

1. VEGETATION REMOVAL, CLEARING, AND GRADING SHALL ENTAIL NO MORE THAN IS PRUDENT FOR CONSTRUCTION OF THOSE FACILITIES NECESSARY FOR THE USE AND ENJOYMENT OF THE PROPERTY IN THE OPINION OF THE COUNTY ENGINEER. CLEARING AND GRADING ACTIVITIES SHALL BE LIMITED TO SIX DRY SUMMER MONTHS (MAY 1 THROUGH OCTOBER 31). TREE AND BRUSH REMAINS SHALL BE CHIPPED AND SPREAD RATHER THAN BURNED. EARTH-DISTURBING ACTIVITIES OUTSIDE OF THIS SEASON WILL NECESSITATE PREPARATION AND APPROVAL OF AN INTERIM PLAN PROVIDING TEMPORARY CONSTRUCTION EROSION-CONTROL MEASURES.
2. CUT SLOPES SHALL BE NO STEEPER THAN 2 TO 1 UNLESS STABLE ROCK IS PRESENT IN THE OPINION OF THE COUNTY ENGINEER.
3. UNTREATED FILL SLOPES SHALL BE NO STEEPER THAN 2 TO 1; SLOPES UP TO 1 TO 1 MAY BE PERMITTED IN SPECIFIC INSTANCES WHERE THE COUNTY ENGINEER DETERMINED THAT STABILITY IS NOT COMPROMISED, IN WHICH CASE EROSION CONTROL MEASURES IN THE FORM OF ROCK RIP RAP AND/OR STAPLED EROSION-CONTROL BLANKETS (EXCELSIOR "STANDARD PLUS" BY CONTECH OR EQUIVALENT) WILL BE INSTALLED.
4. ALL DRAINAGE DITCHES AND CULVERTS WITH A LONGITUDINAL GRADE EXCEEDING 7% SHALL BE ROCK-LINED WITH 2-8 INCH STONES, UNLESS SUCH DITCHES ARE IN AREAS OF ROCK WHICH IN THE OPINION OF THE COUNTY ENGINEER DO NOT PRESENT AN EROSION HAZARD.
5. INLETS AND OUTLETS OF ALL CULVERTS SHALL BE ROCKED TO PREVENT EROSION AND UNDERCUTTING.
6. CONCENTRATION OF DRAINAGE SHOULD BE AVOIDED WHERE POSSIBLE BY UTILIZING "SHEET FLOW" FROM TOES OF FILLS.
7. ALL SITE, EROSION CONTROL AND DRAINAGE WORK SHALL BE COMPLETED CONCURRENTLY WITH LOT DEVELOPMENT, AND SHALL BE REVIEWED BY THE COUNTY ENGINEER AT THE TIME OF FINAL BUILDING INSPECTIONS, TO INSURE THE CONSTRUCTED FACILITIES ARE PERFORMING SATISFACTORILY, AND/OR TO REQUIRE ANY ADDITIONAL CORRECTIVE MEASURES TO PROTECT THE QUALITY OF LAKE ALMANOR. ANY NEEDED CORRECTIVE WORK SHALL BE DONE WITHIN 12 MONTHS OF COMPLETION (TIME FRAMES CORRESPONDING TO NORMAL ONE-YEAR CONTRACTOR'S WARRANTY).

ENVIRONMENTAL HEALTH DEPT NOTE SEPTIC SYSTEMS

SEPTIC SYSTEMS DESIGNED FOR THIS PROJECT LIMIT THE NUMBER OF BEDROOMS TO 3.
DESIGNATED LEACHFIELD AREAS INCLUDE REPLACEMENT AREA.



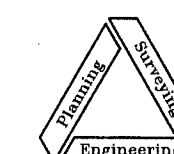
SCALE: 1" = 100'

PARCEL MAP ADDITIONAL INFORMATION SHEET FOR

KENNETH D. MARTIN

IN SECTION 3, T27N, R8E MDB&M
PLUMAS COUNTY, CALIFORNIA

SCALE: 1" = 100'



NST Engineering, Inc.
1495 Riverside Drive
Susanville, CA 96130
(916) 257-5173

FEBRUARY 7, 1994

SHEET 3 OF 3

91-100

10 PM 112