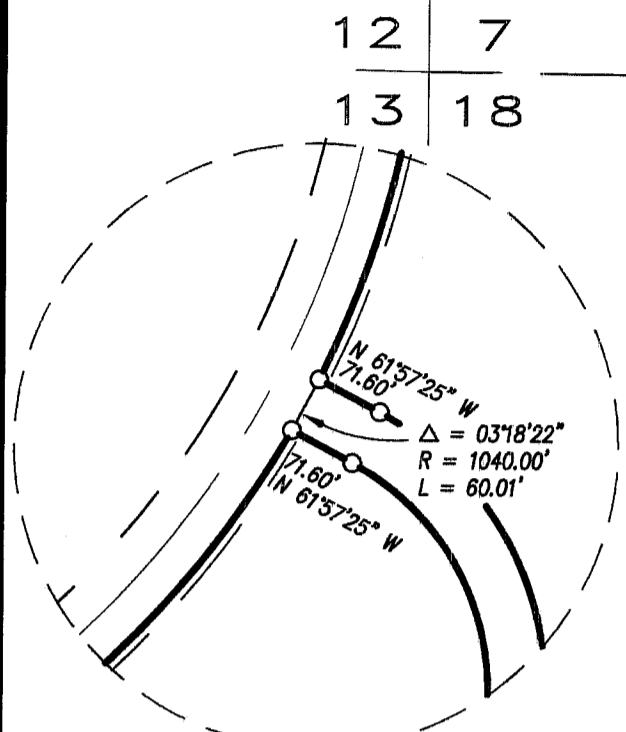


LEGEND

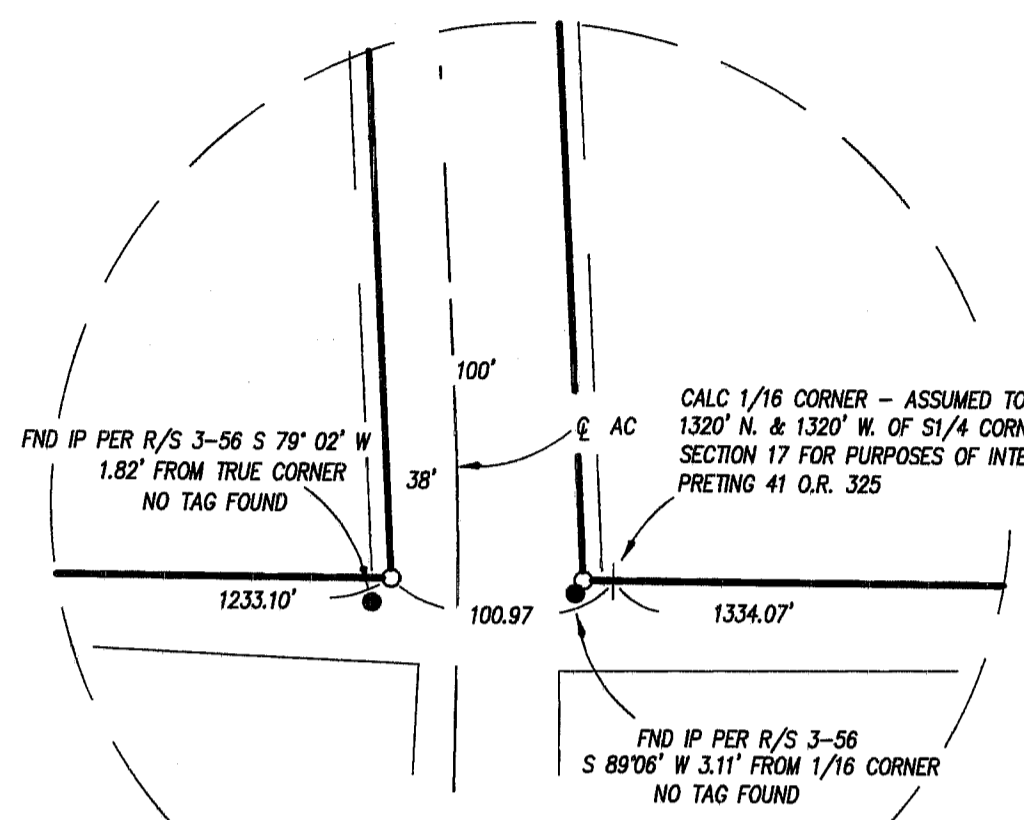
- FOUND MONUMENTS AS NOTED
- SET 1/2" REBAR W/ CAP STAMPED LS 3989
- FOUND 2" COUNTY ROAD R/W BRASS CAP MONUMENT - NO RECORD - STAMPED IT "LS 3989"
- FOUND MONUMENTS PER 8 M 19

BASIS OF BEARINGS

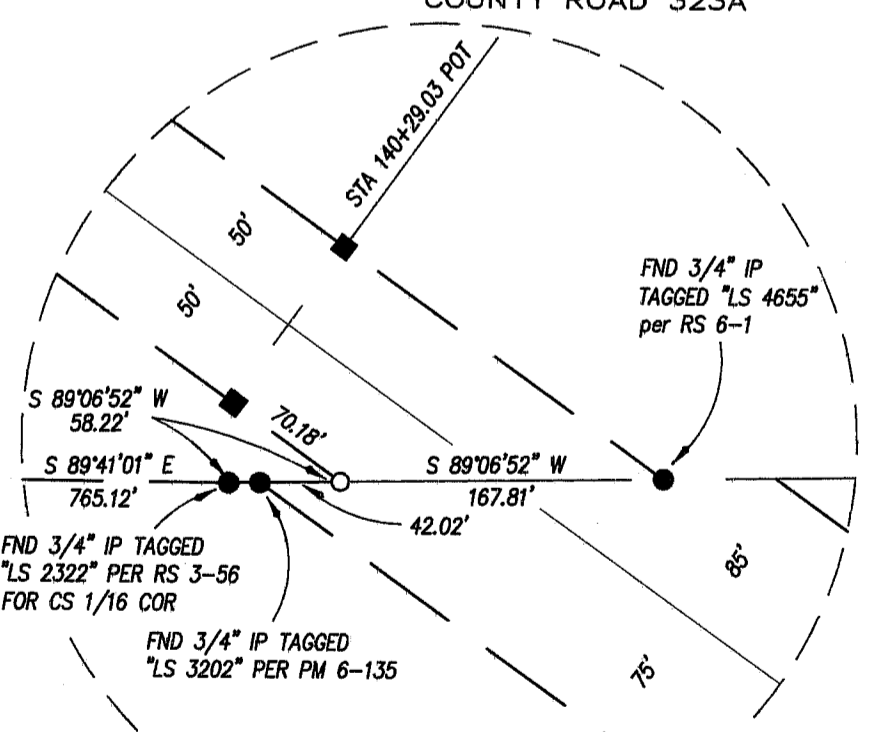
THE BASIS OF BEARINGS FOR THIS PROJECT IS SOLAR OBSERVATION; TAKEN AT THE INTERSECTION OF WALKER ROAD AND COUNTY ROAD A-13 ON AUG. 5, 1983, AND UTILIZED FOR DESCRIPTION WITHIN 434 OR 178.



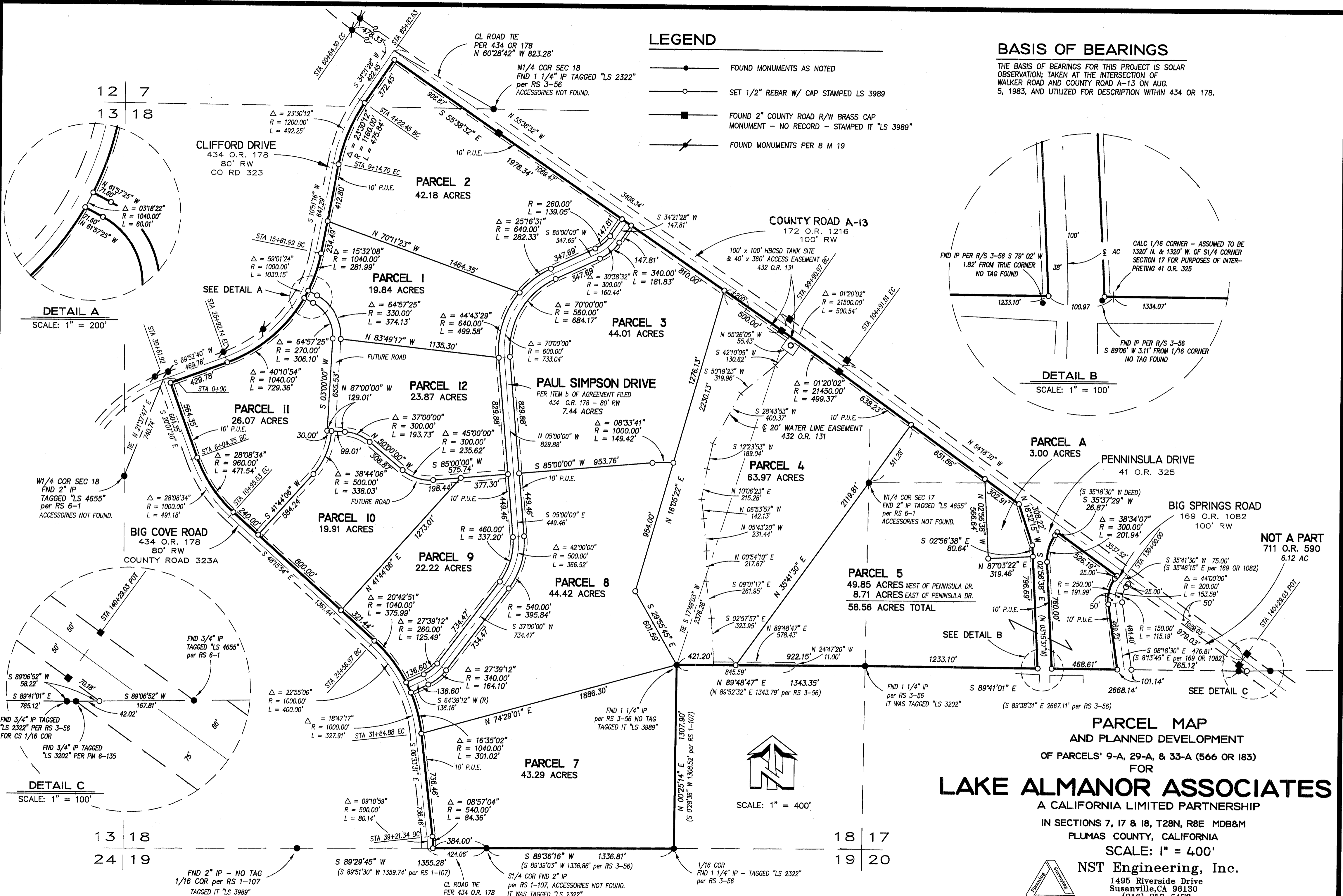
DETAIL A  
SCALE: 1" = 200'



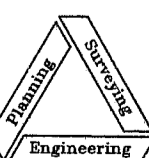
DETAIL B  
SCALE: 1" = 100'



DETAIL C  
SCALE: 1" = 100'



SCALE: 1" = 400'



**PARCEL MAP AND PLANNED DEVELOPMENT**  
 OF PARCELS 9-A, 29-A, & 33-A (566 OR 183)  
 FOR  
**LAKE ALMANOR ASSOCIATES**  
 A CALIFORNIA LIMITED PARTNERSHIP  
 IN SECTIONS 7, 17 & 18, T28N, R8E MDB&M  
 PLUMAS COUNTY, CALIFORNIA  
 SCALE: 1" = 400'  
**NST Engineering, Inc.**  
 1495 Riverside Drive  
 Susanville, CA 96130  
 (916) 257-5173

OCTOBER, 1997  
 JOB No. 91-77

SHEET 2 OF 3