

CURVE TABLE

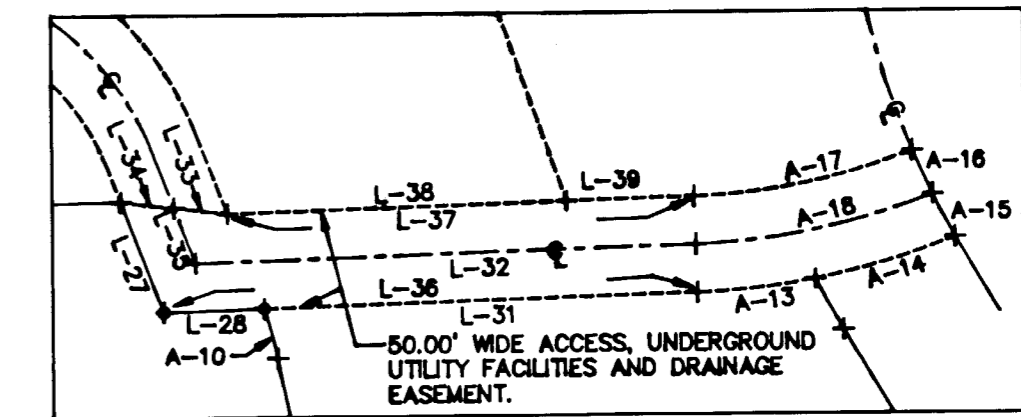
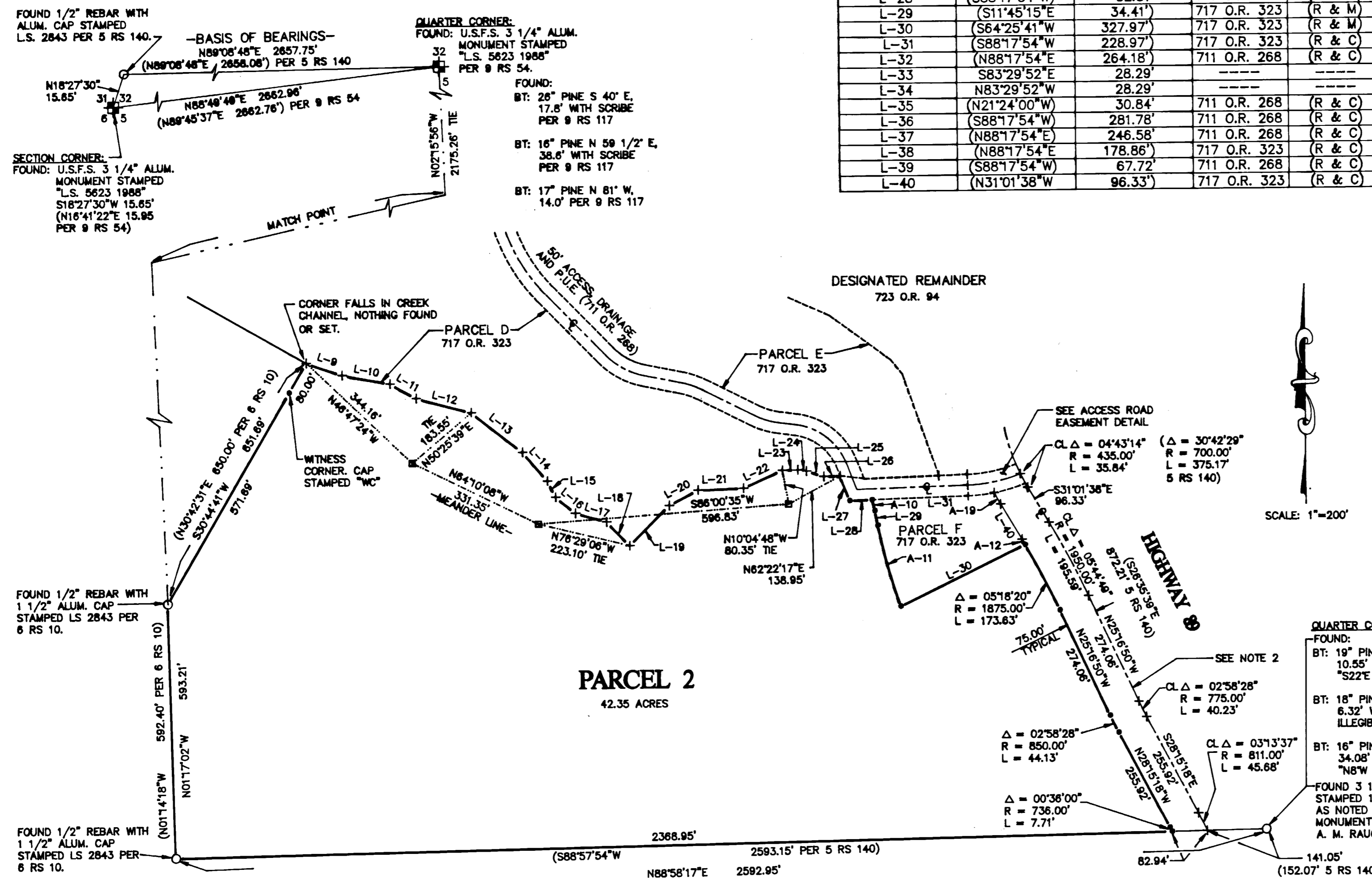
CURVE	RADIUS	LENGTH	DELTA	RECORD
A-10	(225.00')	26.70'	06°47'57"	717 O.R. 323 (R & M)
A-11	(1475.00')	197.46'	07°40'13"	717 O.R. 323 (R & M)
A-12	(1875.00')	14.44'	00°26'28"	717 O.R. 323 (R & C)
A-13	(400.00')	62.48'	08°57'00"	717 O.R. 323 (R & C)
A-14	400.00'	76.91'	11°01'02"	-----
A-15	435.00'	25.17'	03°18'53"	-----
A-16	435.00'	25.05'	03°17'58"	-----
A-17	350.00'	117.91'	19°18'06"	-----
A-18	(375.00')	127.93'	19°32'44"	711 O.R. 268 (R & C)
A-19	(510.00')	30.40'	03°24'53"	717 O.R. 323 (R & C)

TANGENT TABLE

LINE	DIRECTION	DISTANCE	RECORD
L-9	N71°09'05"W	90.23'	717 O.R. 323 (R & C)
L-10	N79°41'30"W	116.41'	717 O.R. 323 (R & C)
L-11	S60°59'02"E	70.92'	717 O.R. 323 (R & C)
L-12	N75°15'04"W	134.84'	717 O.R. 323 (R & C)
L-13	N52°17'18"W	152.69'	717 O.R. 323 (R & C)
L-14	S40°56'12"E	89.46'	717 O.R. 323 (R & C)
L-15	S26°43'36"E	42.27'	717 O.R. 323 (R & C)
L-16	S51°12'52"E	60.42'	717 O.R. 323 (R & C)
L-17	N74°18'53"W	76.30'	717 O.R. 323 (R & C)
L-18	S44°12'20"E	78.45'	717 O.R. 323 (R & C)
L-19	N45°35'56"E	132.90'	717 O.R. 323 (R & C)
L-20	N62°53'38"E	77.17'	717 O.R. 323 (R & C)
L-21	S88°04'20"W	108.07'	717 O.R. 323 (R & C)
L-22	S66°09'21"W	101.40'	717 O.R. 323 (R & C)
L-23	S89°48'24"W	36.13'	717 O.R. 323 (R & C)
L-24	S83°09'21"E	21.07'	717 O.R. 323 (R & C)
L-25	S72°44'19"E	43.57'	717 O.R. 323 (R & C)
L-26	N89°02'29"E	38.52'	717 O.R. 323 (R & C)
L-27	(S21°24'00"E)	61.68'	711 O.R. 268 (R & C)
L-28	(S88°17'54"W)	52.81'	711 O.R. 268 (R & M)
L-29	(S11°45'15"E)	34.41'	717 O.R. 323 (R & M)
L-30	(S64°25'41"W)	327.97'	717 O.R. 323 (R & M)
L-31	(S88°17'54"W)	228.97'	717 O.R. 323 (R & C)
L-32	(N88°17'54"E)	264.18'	711 O.R. 268 (R & C)
L-33	(S83°29'52"E)	28.29'	-----
L-34	(N83°29'52"W)	28.29'	-----
L-35	(N21°24'00"W)	30.84'	711 O.R. 268 (R & C)
L-36	(S88°17'54"W)	281.78'	711 O.R. 268 (R & C)
L-37	(N88°17'54"E)	246.58'	711 O.R. 268 (R & C)
L-38	(N88°17'54"E)	178.86'	717 O.R. 323 (R & C)
L-39	(S88°17'54"W)	67.72'	711 O.R. 268 (R & C)
L-40	(N31°01'38"W)	96.33'	717 O.R. 323 (R & C)

LEGEND

- FOUND MONUMENT AS NOTED.
- SET 1/2" REBAR WITH ALUMINUM CAP STAMPED L.S. 7045
- ⊠ SET 1/2" REBAR WITH ALUMINUM CAP STAMPED "L.S. 7045" AND "MC". (MEANDER CORNER)
- + COMPUTED POINT, NOTHING SET.
- 717 O.R. 323 OFFICIAL RECORD, VOLUME AND PAGE.
- B M 90 MAPS, BOOK AND PAGE.
- P.U.E. PUBLIC UTILITY EASEMENT
- () RECORD DATA AS INDICATED.
- (R & M) RECORD AND MEASURED DATA.
- (R & C) RECORD AND CALCULATED DATA.



ACCESS ROAD EASEMENT DETAIL
PORTION OF 711 O.R. 268
NOT TO SCALE

NOTES:

- THE BASIS OF BEARINGS FOR PARCEL 2 OF THIS MAP IS THE WEST HALF OF THE SOUTH SECTION LINE OF SECTION 32, T.22 N., R. 13 E., MDM, SHOWN AS N 88°08'48" E IN BOOK 5 OF RECORDS OF SURVEY AT PAGE 140, PLUMAS COUNTY RECORDS.
- THE CENTERLINE OF HIGHWAY 89, AS SHOWN HEREON, CORRESPONDS TO THE CENTERLINE OF THE EXISTING PAVEMENT. THE PAVEMENT CENTERLINE DOES NOT HAVE A CONSISTENT CORRELATION WITH THE RECORD CENTERLINE DATA AS SHOWN ON 5 RS 140.

**WHITEHAWK RANCH
PARCEL MAP**
A PLANNED DEVELOPMENT

FOR
MOHAWK VALLEY RANCH, INC.
WITHIN A PORTIONS OF SECTION 5, T. 21 N., R. 13 E., M.D.M.
AND SECTION 32, T. 22 N., R. 13 E., M.D.M.
PLUMAS COUNTY, CALIFORNIA

PREPARED BY:
BASTIAN ENGINEERING
P.O. BOX 280
GRAEAGLE, CALIFORNIA 96103
L.S.7045

AUGUST 1999

SHEET 3 OF 5