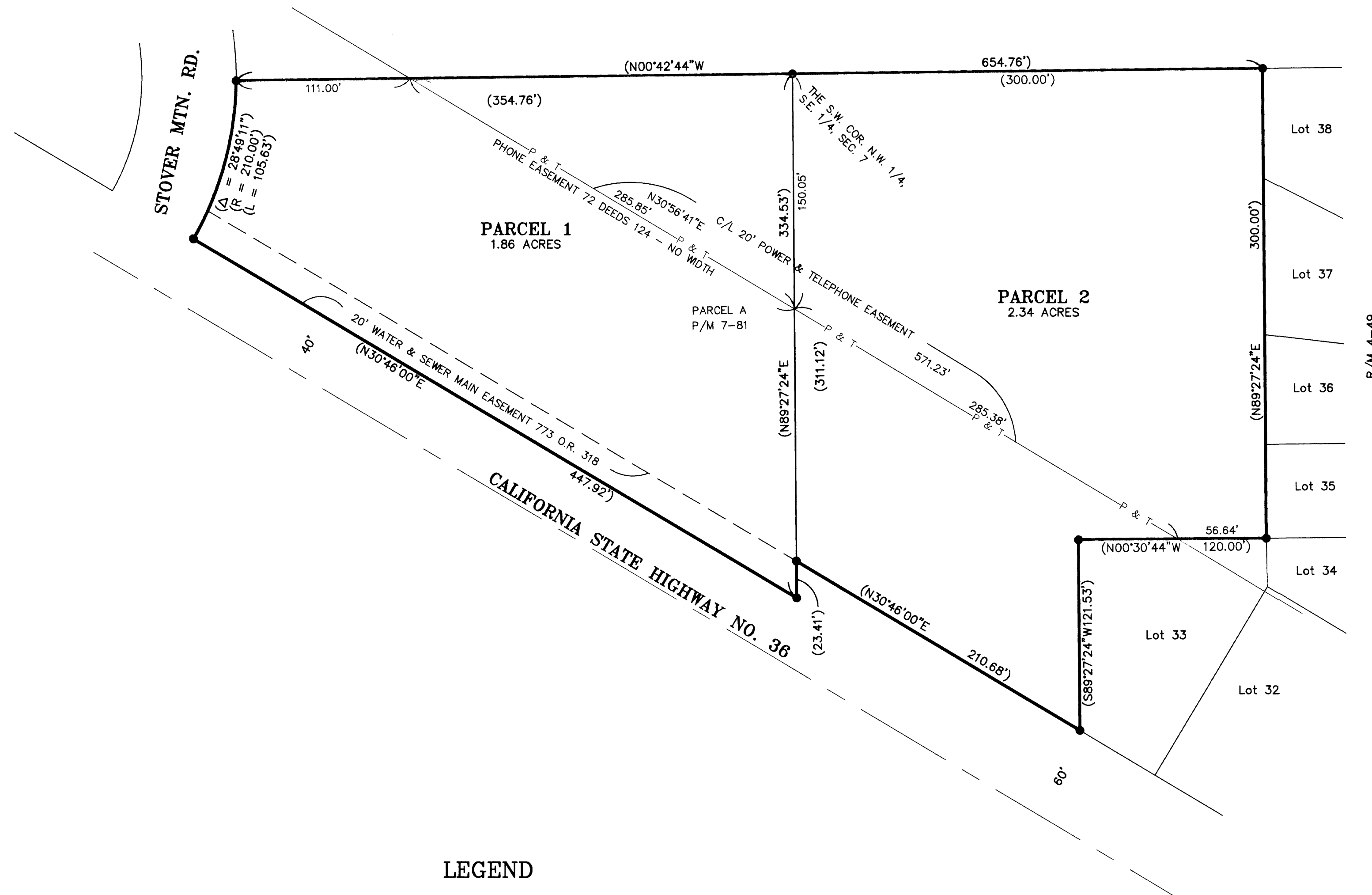


SCALE : 1" = 50'



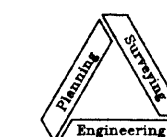
LEGEND

- INDICATES RECORD MONUMENTS PER P/M 7/81.
- ( ) INDICATES RECORD INFORMATION PER 7/81.

PARCEL MAP FOR  
**STEVEN D. & SUSAN E. GOODWIN AND  
 S.O.S. PROPERTIES, A PARTNERSHIP**

IN SECTION 7, T.28 N., R.7 E., M.D.B. & M.  
 PARCEL A, P/M 7-81  
 TOWN OF CHESTER, PLUMAS COUNTY, CALIFORNIA

SCALE: 1" = 50'



**NST Engineering, Inc.**  
 1495 Riverside Drive  
 Susanville, CA 96130  
 (530) 257-5173

2000-075 PM

SHEET 2 OF 2

11PM108