

COUNTY TAX COLLECTOR'S STATEMENT

I, Ginny Dunbar, Tax Collector of the County of Plumas, State of California, do hereby certify that there are no tax liens against the parcels shown hereon for unpaid state, county, municipal or local taxes or special assessments collected as taxes, except taxes or assessments not yet payable. Taxes or assessments which are a lien but not yet payable are estimated to be in the amount of 628.00.

Dated: 7-23-03

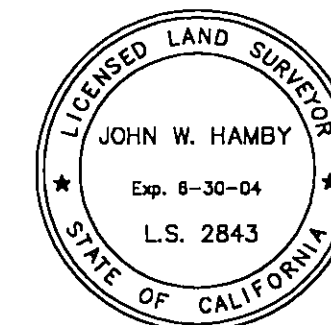
Ginny Dunbar
Ginny Dunbar
Plumas County Tax Collector

OWNER'S STATEMENT

A Certificate of Ownership is on file with the County Recorder as Document No. 2003-0008919. The certificate was signed by Earle Little and Rosalie A. Little and states that they consented to the preparation and recording of this map, and that they are the only persons whose consent is required to pass title to said land and they offer for dedication a 60' wide Public Utility Easement as shown on this map.

SURVEYOR'S STATEMENT

This map was prepared by me or under my direction and is based upon a field survey in conformance with the requirements of the Subdivision Map Act and local ordinance at the request of Earle Little in July, 2002. All the monuments shown hereon are of the character and occupy the positions indicated and are sufficient to enable the survey to be retraced. I hereby state that this parcel map substantially conforms to the approved or conditionally approved tentative map, if any.



John W. Hamby
John W. Hamby L.S. 2843

COUNTY SURVEYOR'S STATEMENT

I have examined this map and find it is substantially the same as it appeared on the tentative map and any approved alterations thereof. All provisions of the Subdivision Map Act and any local ordinances applicable at the time of approval of the tentative map have been complied with and I am satisfied that the map is technically correct. The offer of dedication for the 60' wide Public Utility Easement is accepted for the use noted.

Dated: August 5, 2003

R. Tom Hunter
R. Tom Hunter R.C.E. 30515
Plumas County Surveyor
License Expiration Date 3/31/04



COUNTY RECORDER'S STATEMENT

Filed this 6th day of August, 2003 at 1:50 P.m.
in Book 11 of Parcel Maps, at page 123-124 at the request
of the County Surveyor.

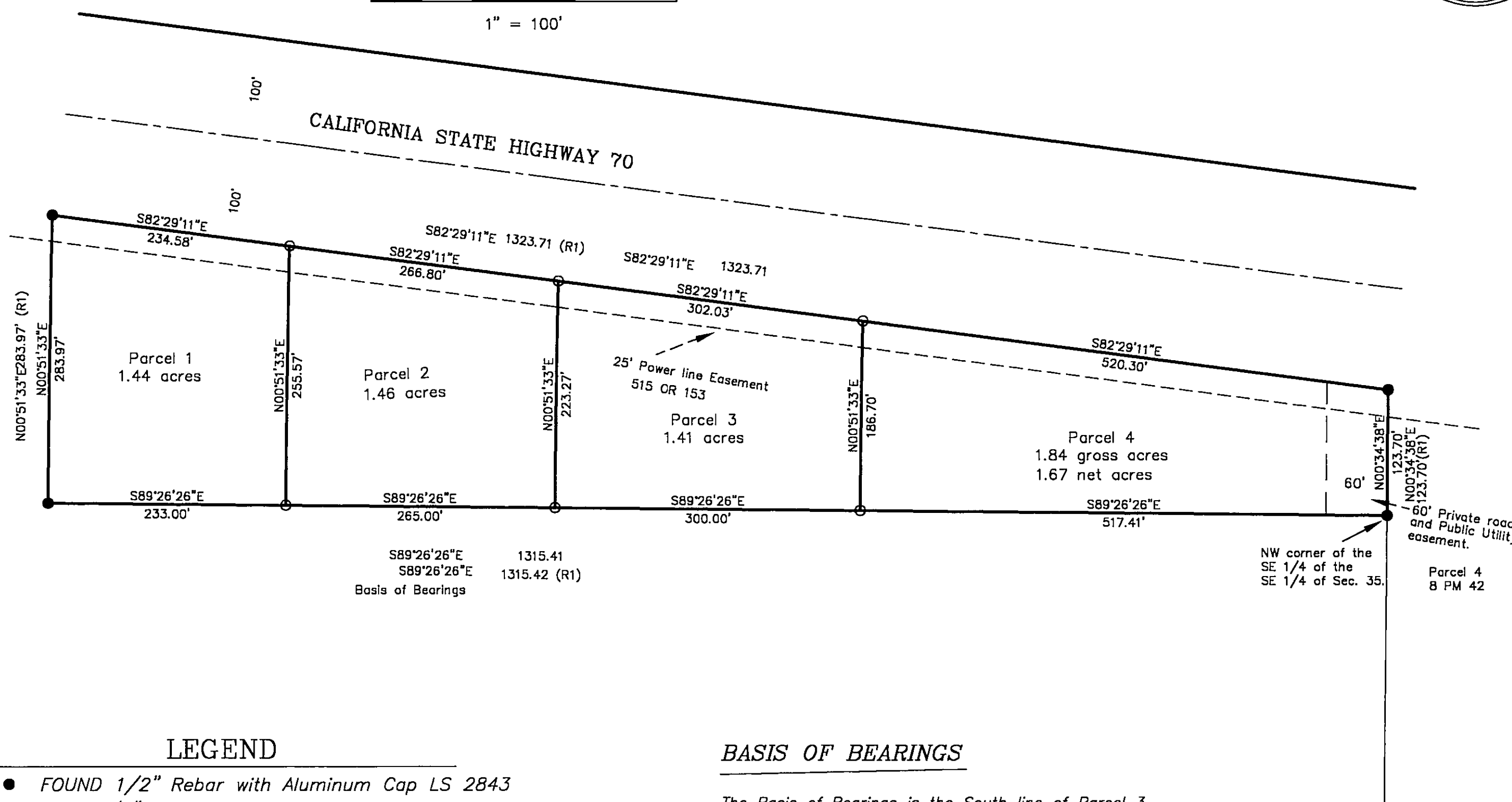
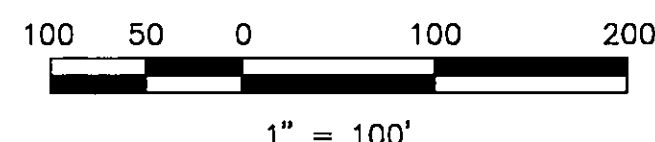
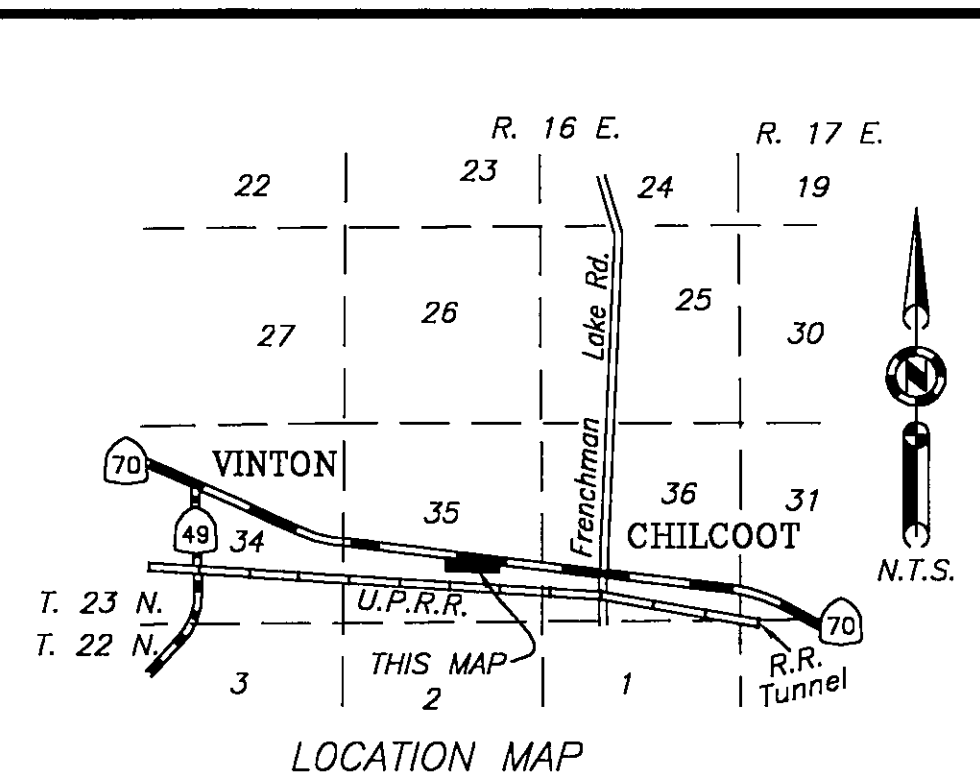
Fee \$10.00 Kathleen Williams
County Recorder
File No. 2003-8920 By *Patty Samuel*
Deputy

PARCEL MAP

for
EARLE LITTLE and ROSALIE LITTLE

Parcel 3 per 8 PM 42
A portion of Section 35
T. 23 N., R. 16 E., M.D.M.
Plumas County, California
May, 2003 Scale 1" = 100'

Hamby Surveying Inc.
P.O. Box 1209
Portola, CA 96122 SHEET 1 of 2
(530) 832-5571



LEGEND

- FOUND 1/2" Rebar with Aluminum Cap LS 2843
 - SET 5/8" Rebar & Aluminum Cap LS 2843
- (R1) RECORD per 8 PM 42

BASIS OF BEARINGS

The Basis of Bearings is the South line of Parcel 3 shown as N89°26'26"W on the map filed in the office of the Recorder of Plumas County in Book 8 PM 42.