

LEGEND:

- COMPUTED POINT, NOTHING SET
- (C) COMPUTED DATA
- (M) MEASURED DATA
- (R) RECORD DATA PER RECORD REFERENCES
- FOUND MONUMENT, SEE FOUND MONUMENT NOTES FOR CORRESPONDING REFERENCE NUMBER DESCRIPTION
- NO MONUMENTS WERE SET AS PART OF THIS SURVEY
- SUBDIVISION BOUNDARY
- CENTERLINE
- LOT LINE
- - - EXISTING LOT LINE
- - - EASEMENT AS NOTED
- - - EASEMENT AS NOTED
- - - TIE LINE
- P.U.E. PUBLIC UTILITY EASEMENT
- ROW RIGHT OF WAY

FOUND MONUMENT NOTES:

- ① FOUND 1" IRON PIPE TAGGED LS3202, PER R1.
- ② FOUND 3/4" IRON PIPE - DISTURBED TAGGED LS3202, PER R1. - NOT ACCEPTED
- ③ FOUND 3/4" IRON PIPE, - DISTURBED ILLEGIBLE CAP. - NOT ACCEPTED

RECORD REFERENCES:

R1 - "LAKE ALMANOR COUNTRY CLUB UNIT NO. 21", BOOK 5 OF MAPS, PAGE 47, 48, AND 49

BASIS OF BEARING:

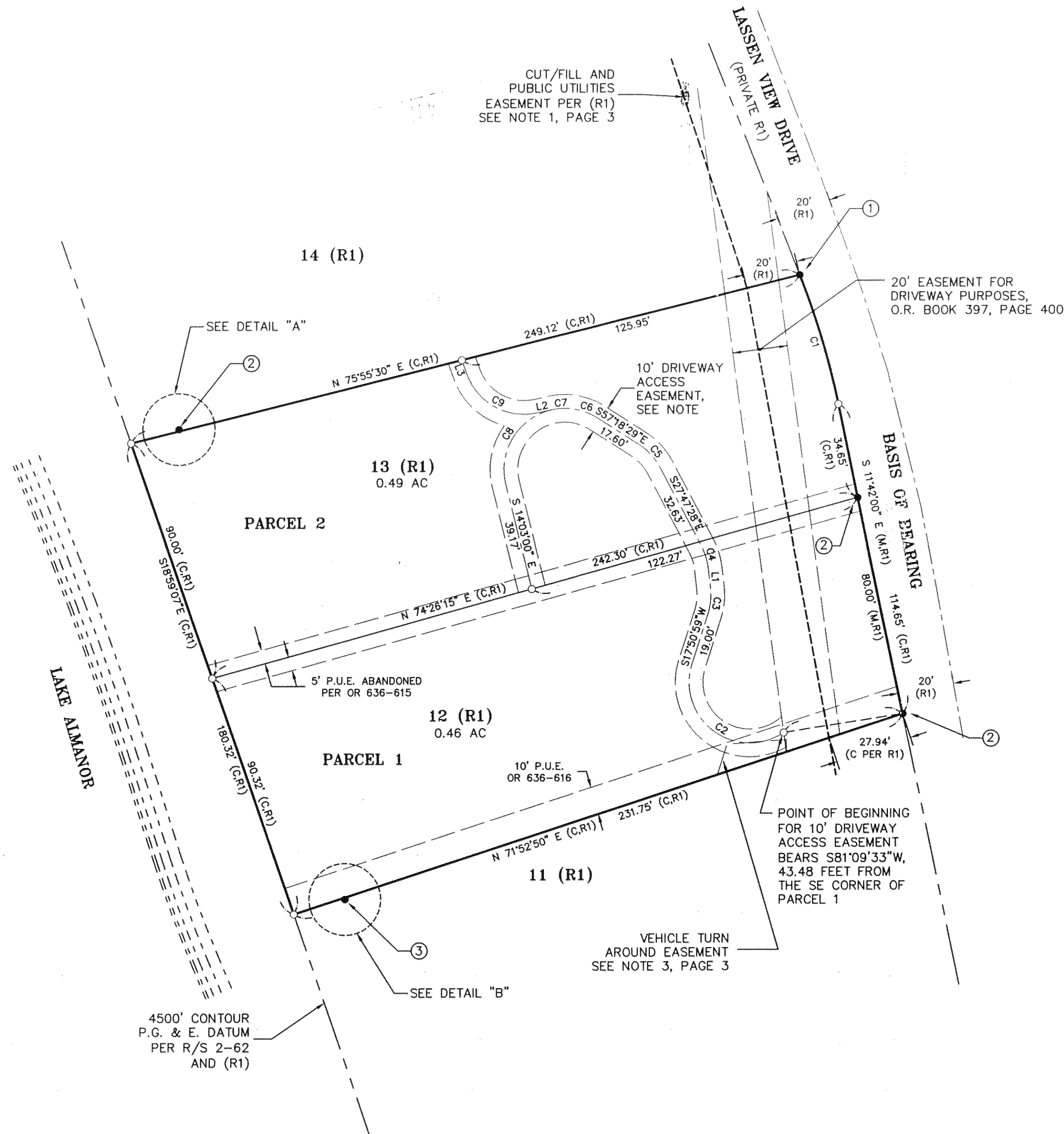
THE BASIS OF BEARING FOR THIS MAP IS THE EASTERLY LINE OF LOT 12 TAKEN AS S11°42'00"E BETWEEN FOUND MONUMENTS, PER R1.

NOTES:

THE 10' NON-EXCLUSIVE DRIVEWAY ACCESS EASEMENT, SHOWN HEREON, IS TO BE RESERVED IN DEEDS FOR THE BENEFIT OF LOTS 12, & 13 AS SHOWN ON THAT CERTAIN MAP ENTITLED "LAKE ALMANOR COUNTRY CLUB UNIT 21" BOOK 5 OF MAPS, AT PAGES 47, 48 & 49 IN A PORTION OF NW 1/4 SECTION 25, T.28N., R.7E., M.D.M., COUNTY OF PLUMAS, STATE OF CALIFORNIA.

ROADS SHOWN HEREON ARE PRIVATE EASEMENTS NOT SUBJECT TO IMPROVEMENT OR MAINTENANCE BY PLUMAS COUNTY. SUCH EASEMENTS WILL NOT BECOME EFFECTIVE UNLESS AND UNTIL RESERVATIONS AND GRANTS ARE INCLUDED IN THE RESPECTIVE DEEDS.

THIS MAP REPRESENTS A SUBDIVISION OF THE LANDS DESCRIBED IN DOCUMENT NUMBER 2005-793, OFFICIAL RECORDS OF PLUMAS COUNTY.



CURVE TABLE

CURVE	LENGTH	RADIUS	DELTA	
C1	48.87'	280.00'	10°00'00"	R1
C2	54.42'	22.00'	141°43'52"	M
C3	9.36'	22.00'	24°22'17"	M
C4	8.19'	22.00'	21°19'00"	M
C5	11.37'	22.00'	29°35'59"	M
C6	10.05'	22.00'	26°10'16"	M
C7	6.88'	22.00'	17°54'46"	M
C8	35.44'	22.00'	92°18'29"	M
C9	31.17'	22.00'	81°10'28"	M

LINE TABLE

LINE	LENGTH	BEARING
L1	7.46'	N06°24'28"W
L2	5.98'	N78°19'42"E
L3	5.60'	S20°18'04"E

PARCEL MAP

RE-DIVIDING LOTS 12 AND 13 AS SHOWN ON THAT CERTAIN MAP ENTITLED "LAKE ALMANOR COUNTRY CLUB UNIT 21" BOOK 5 OF MAPS AT PAGES 47, 48 & 49 IN A PORTION OF NW 1/4 SECTION 25, T.28N., R.7E., M.D.M. COUNTY OF PLUMAS STATE OF CALIFORNIA

FOR
ERIC AND ALLISON HART
AND
PHILLIP AND SHELLEY FIGONE

LUMOS & ASSOCIATES, INC.
3259 ESPLANADE, SUITE 102
CHICO, CALIFORNIA 95973
(530) 899-9503

12 PM 65