

RAILROAD AVENUE

SUMMERFIELD LANE

Found 1/2" Rebar with Plastic Cap Stamped R.C.E. 11173 Per 4 M 130

Found 3/4" Iron Pipe Per 4 M 130 (Tag illegible)

NOTHING FOUND SET MONUMENT IN RECORD POSITION

10' PUBLIC UTILITY EASEMENT PER 4M130

10' PUBLIC UTILITY EASEMENT PER 4M130

LOT 1

LOT 2

N80°24'27"E 580.12' (R)(C)
N80°24'27"E 580.12' (M)
Basis of Bearings

LOT 3A
0.16 ACRES

LOT 3B
0.26 ACRES

20' BUILDING SETBACK PER 4M130 (TYP.)

5' SNOW REMOVAL AND PUBLIC UTILITY EASEMENT PER 4M130 (TYP.)

50' EASEMENT FOR DRAINAGE AND INCIDENTAL PURPOSES PER 4M130

10' DRAINAGE EASEMENT PER 4M130

LOT 6

LOT 5

LOT 4

LEGEND

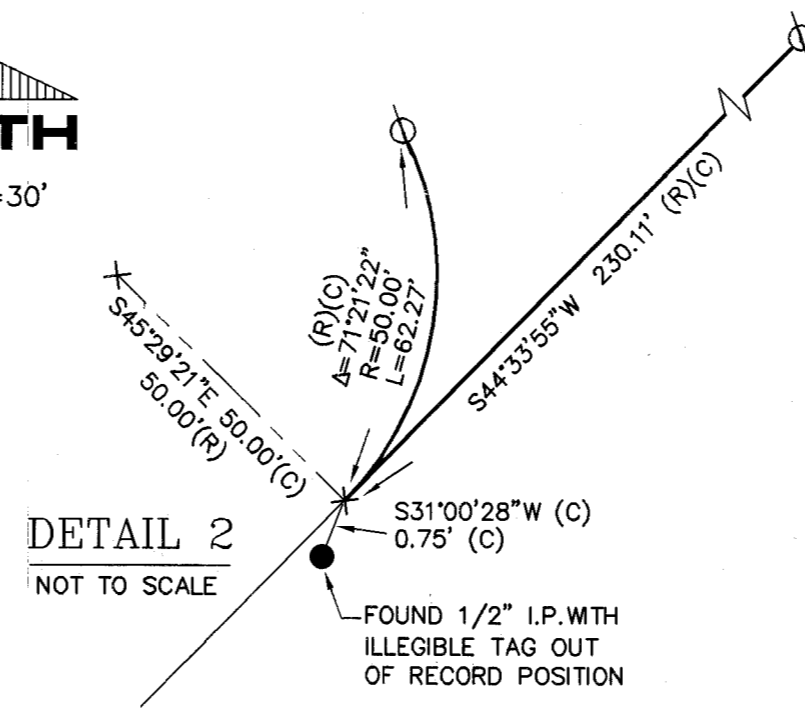
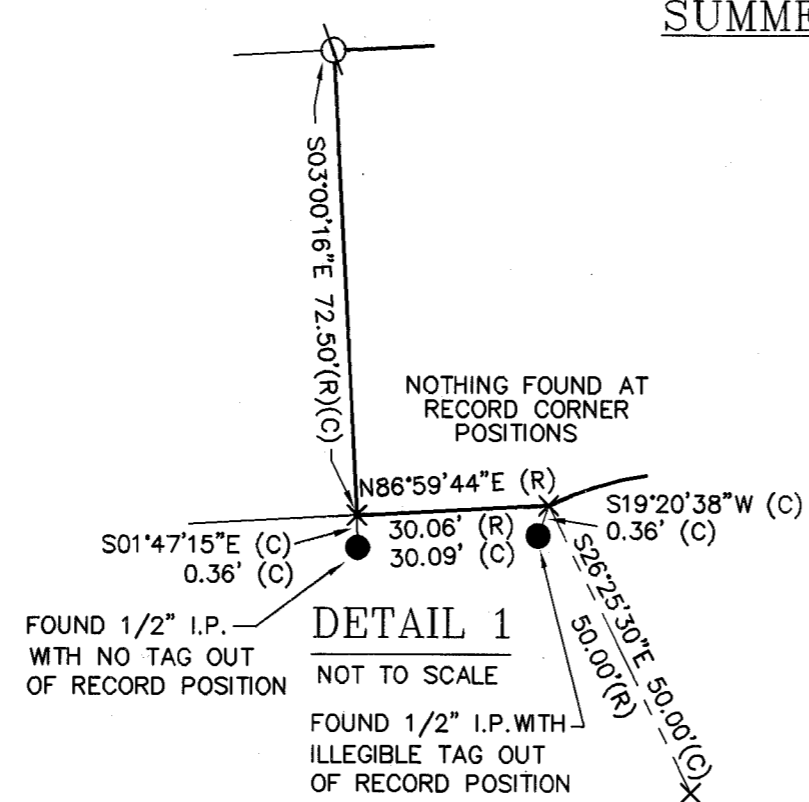
- FOUND Monument as noted.
- ⊗ SET 1/2" Rebar & Aluminum Cap stamped LS 7045
- X Nothing Found or set
- (R) Record Data per 4 M 130
- (R&M) Record data per 4 M 130 and Measured Data
- (C) Calculated Data
- (M) Measured Data

SUMMERFIELD SUBDIVISION

PER 4 M 130



SCALE: 1"=30'



BASIS OF BEARINGS

The Basis of Bearings for this Parcel Map is N80°24'27"E which is a line calculated between record monuments as shown on Book 4 of Maps at Page 130, Plumas County Records.

PARCEL MAP

FOR:
MOUSER DEVELOPMENT, LLC.
LOT 3, IN SUMMERFIELD SUBDIVISION 4 M 130
WITHIN A PORTION OF: THE SW 1/4 OF
SECTION 14, T. 24 N., R. 9 E., M.D.B.M.
WITHIN THE TOWN OF QUINCY
PLUMAS COUNTY, CALIFORNIA

PREPARED BY:
BASTIAN ENGINEERING
211 POPLAR VALLEY ROAD
BLAIRSDEN, CALIFORNIA 96103
L.S. 7045

DECEMBER, 2020

SHEET 2 OF 2

13 PM 17