

RECORD OF SURVEY
RETRACEMENT OF PORTION OF MINERAL SURVEY 4349
CINNAMON BEAR, GRIZZLY QUARTZ, AND BEAR QUARTZ
SECTIONS 25 AND 26 TOWNSHIP 25 NORTH RANGE II EAST M. D. B & M.

FOR

U.S.F.S GREENVILLE DISTRICT

SCALE 1"=200'

DECEMBER 1963

SURVEYOR'S CERTIFICATE

This map correctly represents a survey made by me or under my direction in conformance with the requirements of Chapter 15 of Division 3 of the Business and Professions Code at the request of U.S. FOREST SERVICE in December 1963

Albert H. DeVoe
ALBERT H. DEVOE LS 3079

COUNTY SURVEYOR'S CERTIFICATE

This map has been examined for conformance with the requirements of Chapter 15 of Division 3 of the Business and Professions Code this 16th day of January, 1964

James P. Hanson
COUNTY SURVEYOR

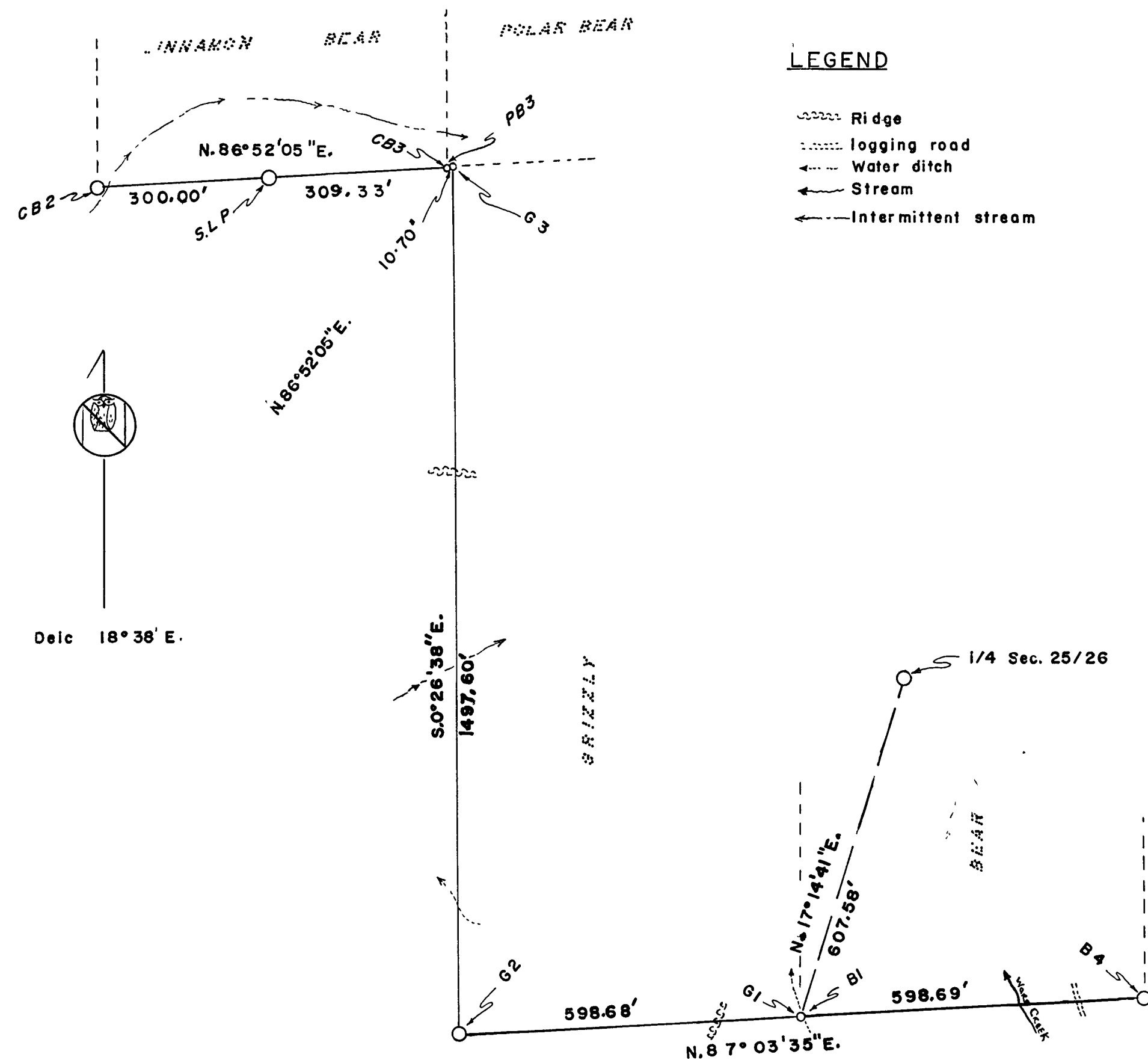
RECORDER'S CERTIFICATE

Filled for record this 16th day of Jan., 1964 at 12: P. m. in Book 2 of R.S. at page 118 at the request of U.S. Forest Service

50

Serial No. 3194

John Hagen Gronwald
COUNTY RECORDER



FIELD NOTES

This survey was made with a Kern DICMI Theodolite No. 80890 with two concentric scales in the horizontal circle of 1.97 ins. and vertical circle of 1.97 ins. reading to 10 seconds direct and 1 second by estimation. Instrument was in excellent condition at the time of this survey and all adjustments were in order.

The Azimuth of this survey was determined by the method of deflection angles referred to the meridian from the following observations—

November 26, 1963 near Cinnamon Bear Corner No. 3 in Latitude 40°00'16" N. and Longitude 120°43'. I made a series of six altitude observations upon the Sun Azimuth at approximately equal time intervals; three each with the telescope direct and inverted.

Mean time of observation 120th meridian standard time = 9^h 44^m. A.M.
 Declination of Sun at mean time of observation = 20° 54' 11"
 Mean Vertical Angle to Sun = 22° 15' 56"
 Mean Horizontal Angle from Reference Point to Sun = 346° 33' 58"
 True Bearing to Reference Point = S 18° 41' 17" E.

The lines were measured with a K & E steel tape 300 feet in length graduated every foot for 300 feet with the foot before the zero mark subdivided to 1/10 foot and 1/100 foot. All lines and connections of this survey were run by a closed traverse.

The sum of the measured angles was within the prescribed limits of a theoretical sum by a difference not to exceed 30 sec. per angle.

The maximum allowable error of linear measurements between any two points was within the prescribed, one part in 2000.

Feet
(Original
Distance)

CINNAMON BEAR-SOUTH BOUNDARY

At Cor. No. 2 of the Cinnamon Bear Quartz Location found original rock mound and the 12" S. pine N. 15° W. 8.0 ft. Tree is now 17" Dia. and dead. Set 1 1/2" Brass Cap stamped T25N R11E, CB2, 1963, LS 3079 in said rock mound and scribed a new Bearing Tree which is an 18" I. cedar N 10° E 6.0 ft. scribed CB3 BT.
Thence N 86° 52' 05" E. (Original Bearing N. 87° 25' E.)
Ravine N. 40° E.

South Lode Post and rock mound—Scribing legible on Post CBSL-P4349.
Cor. No. 3 Identical with Cor. No. 3 Polar Bear Quartz. Rock md. was destroyed by logging activity, however, set 1 1/2" Brass Cap stamped T25N R11E, CB3, 1963, LS 3079 in new rock mound from original Bearing Trees—24" Spruce N 04° 40' E 11.6 ft. now a 30" W. fir Stump. Top of old face is visible and a 14" Spruce N 82° 20' W. 31.4 ft. now a 26" W. fir. Face is open and scribing legible (CB3-4349 BT). New Bearing Tree is a 4" W. fir S 12° 22' E 11.9 ft. scribed PB3 BT.

POLAR BEAR-SOUTH BOUNDARY

At Cor. No. 3 Polar Bear Identical with Cinnam Bear Cor. No. 3.
Thence N 86° 52' 05" E (Original Bearing N 87° 25' E.)
Cor. No. 3 Grizzly Quartz Location. Corner and Bearing Tree were destroyed by logging; therefore remonument same by a straight line projection from the South Boundary of Cinnamon Bear. Location as indicated by M.S. 4349. Set a 1 1/2" Brass Cap stamped T25N R11E, G3, 1963, LS 3079 in new rock mound. New Bearing Tree is a 20" D fir S 02° 19' E 67.4 ft scribed G3 BT.

Feet
(Original
Distance)

GRIZZLY QUARTZ-WEST AND SOUTH BOUNDARY

At Cor. No. 3 Grizzly Quartz Location.
Thence S 00° 26' 38" E (Original Bearing South).
Ridge East and West.
Draw 3 ft. Course N 65° E.

Old water ditch Course N 38° W.

Cor. No. 2 Found 4x4 Post near original rock mound. Scribing legible (G11). 8" I. cedar B.T. bears N 35° W 2.3 ft, scribing legible (G11-4349 BT). Tree is now 13" in Dia. Set 1 1/2" Brass Cap stamped T25N R11E, G2, 1963, LS 3079 in original mound.

Thence N 87° 03' 35" E (Original Bearing N 87° 25' E).
Searched for Lode Corner - Not Found.
Ridge bears S 25° W.

Cor. No. 1 Identical with Bear No. 1. All evidence of original corner destroyed by logging activity. Set 1 1/2" Brass Cap stamped T25N R11E, G1-B1, 1963, LS-3079 in new rock mound on edge of old water ditch. Corner set by single proportion between Grizzly No. 2 and Bear No. 4. The 1/4 Sec. Cor. between Sec. 25 and 26 of T25N.R11E. M.D.B.&M bears N 17° 14' 41" E 607.58 ft. New B.T.s are 22" I. cedar N 31° 53' W 75.1 ft. scribed G1 BT, and 14" D. fir N 06° 30' E 63.3 ft. scribed B1 BT.

Feet
(Original
Distance)

BEAR QUARTZ LOCATION-SOUTH BOUNDARY

Beginning at G1-B1 on old water ditch.
Thence N 87° 03' 35" E (Original Bearing N 87° 25' E)

Searched for Lode Corner - Not Found.
Ward Creek 4 ft. wide Course N 20° W.

Old logging road bears N 10° W.
Cor. B4. Set 1 1/2" Brass Cap stamped T25N R11E, B4, 1963, LS-3079 in original rock mound. Original B.T. is a 44" P. pine stump N 30° W 32.1 ft. New B.T. is an 8" W. fir N 22° 59' W 35.0 ft. scribed B4 BT.

1/4 Cor. between Sec. 25 and 26 is a 24x12x12 Stone scribed 1/4 set in a rock mound. 16" W. fir stump with visible scribing bears N 51° E 28.4 ft. (Original 22.4 ft.) - 22" W. fir S 25° W (original S 9 3/4° W.) 7.3 ft. face is closed.

20.00
(10.00)
300.00
(310.70)
609.33
(621.40)

10.70

528.00
855.00

1265.00
(1260.00)
1497.60
(1500.00)

300.00
452.00
598.68
(600.00)

300.00
385.00
(380.00)
481.00
598.69
(600.00)