

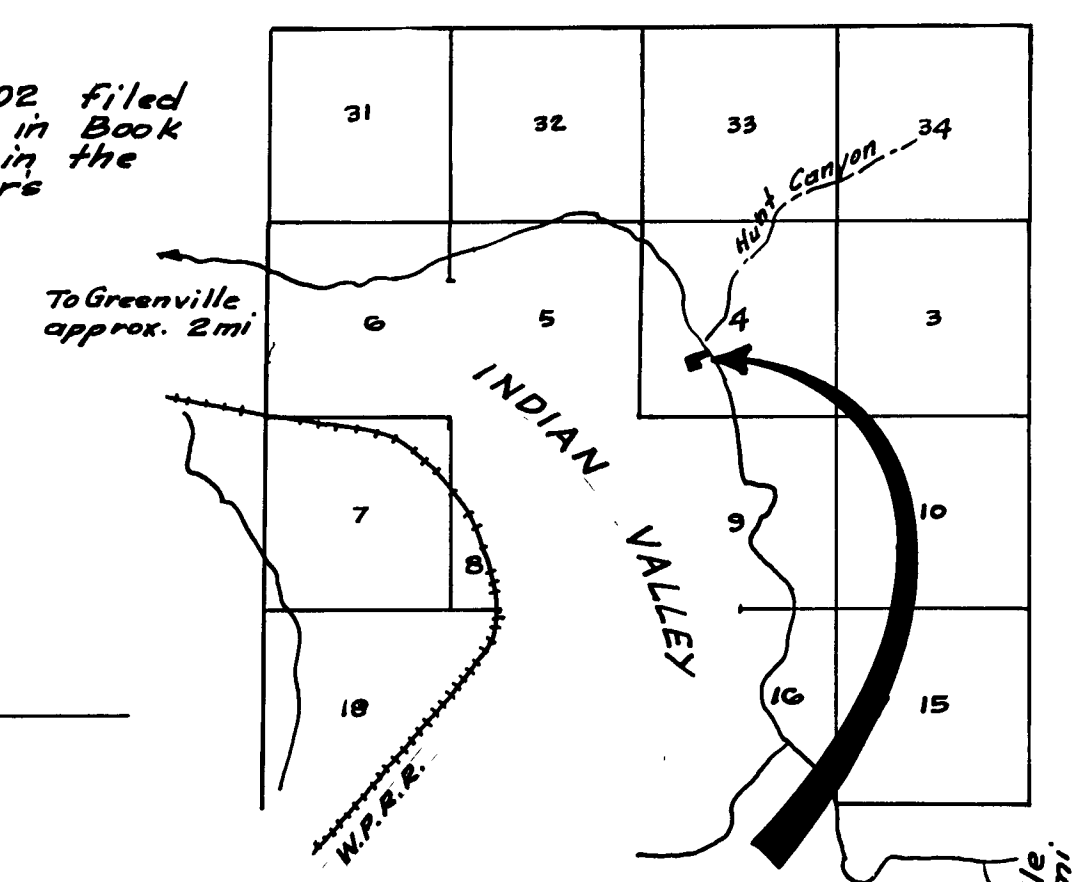


LEGEND

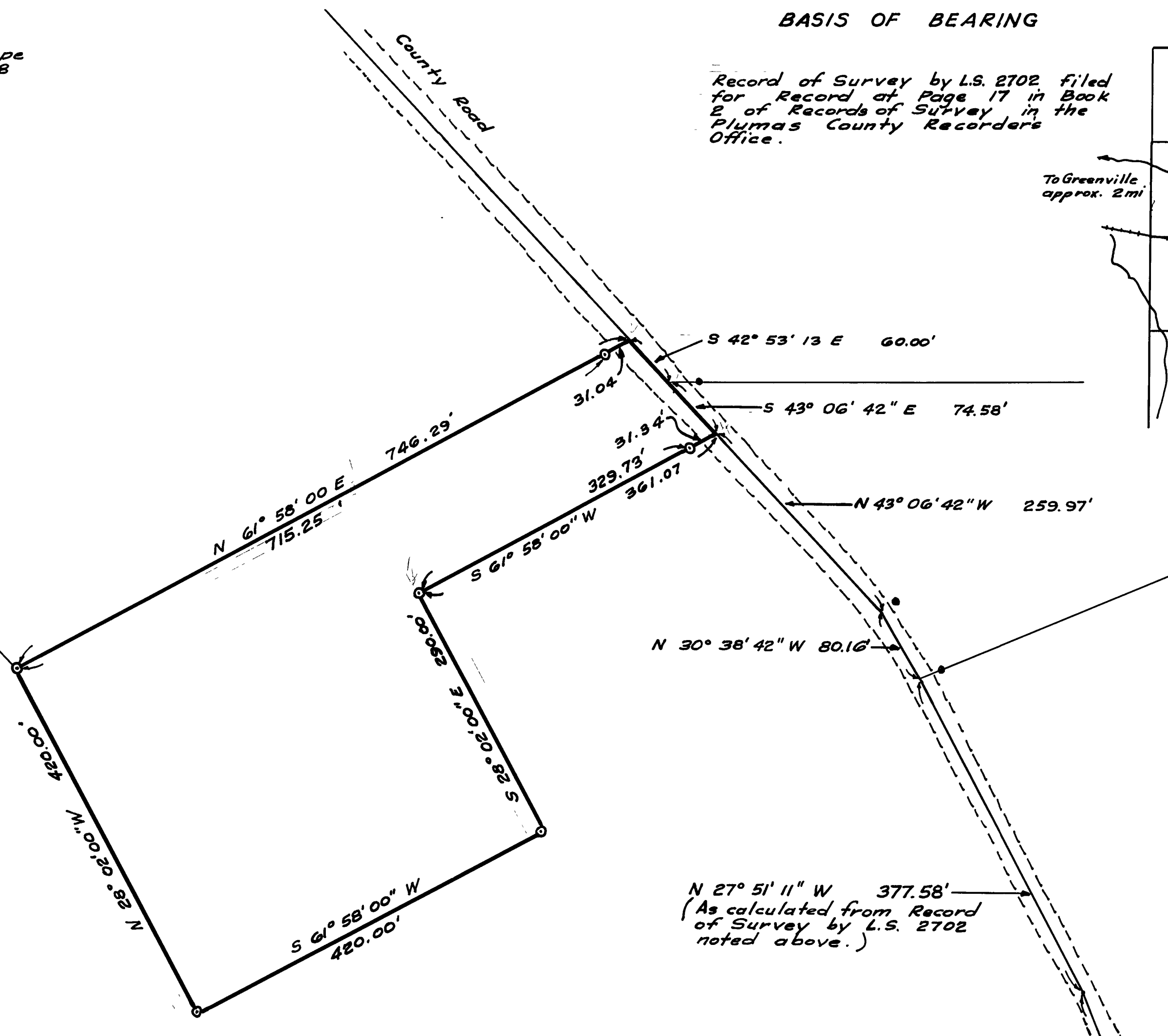
- ⊙ Set 1" ϕ Iron pipe tagged R.C.E. 11128
- Found Iron pipe
- ⊠ Found 1/4 Section Corner as noted

BASIS OF BEARING

Record of Survey by L.S. 2702, filed for Record at Page 17 in Book 2 of Records of Survey in the Plumas County Recorders Office.



LOCATION MAP
Scale 1" = 1 mile



SURVEYOR'S CERTIFICATE

This map correctly represents a survey made by me or under my direction in conformance with the requirements of Chapter 15 of Division 3 of the Business and Professions Code at the request of James Weant in October and November, 1963.

Eugene A. Ringel
Registered Civil Engineer No. 11128

COUNTY SURVEYOR'S CERTIFICATE

This map has been examined for conformance with the requirements of Chapter 15 of Division 3 of the Business and Professions Code this 2nd day of April, 1963

James F. Flanagan
County Surveyor

RECORD OF SURVEY

A PORTION OF SECTION 4
T26N, R10E M.D.M.

PLUMAS COUNTY, CALIF.

FOR
JAMES WEANT

SCALE: 1" = 100 FT. NOV., 1963
RINGEL & ASSOCIATES, INC.
CIVIL ENGINEERS SURVEYORS
331 WALL ST. CHICO

RECORDER'S CERTIFICATE

Filed for record this 2nd day of April, 1963, at 1:45 P.M. in Book 2 of Records of Survey at page 121, at the request of RINGEL AND ASSOCIATES, INC.

Ida Hope Snowball
County Recorder
By *R. Schuler*, Deputy Recorder

N 20° 14' W 1449.25'
(As calculated from Record of Survey by L.S. 2702 noted above.)

Found 1 1/2" Iron pipe

1/4 SEC. COR. 9