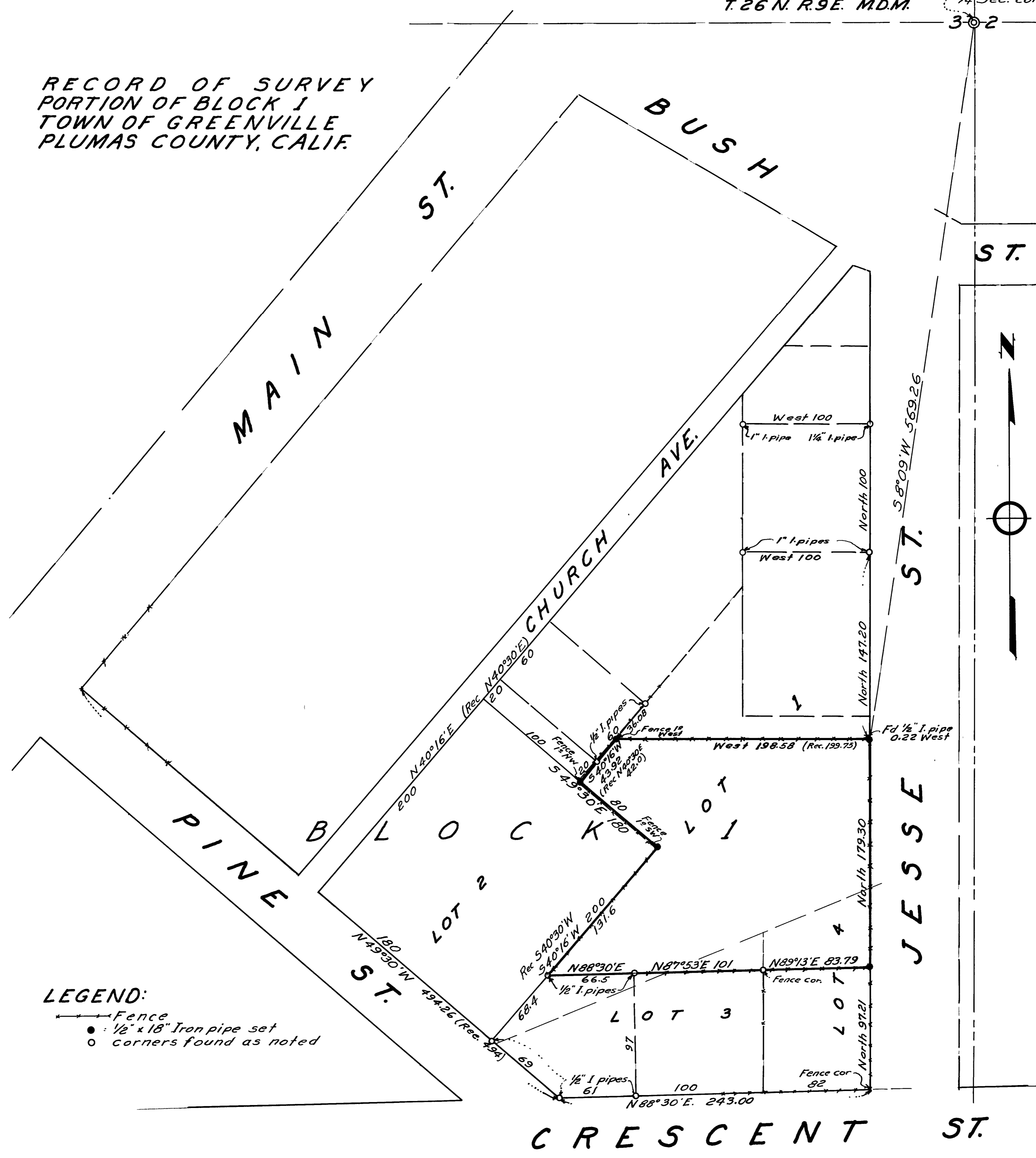


T.26 N. R.9E. M.D.M.

Fd. steel axle  
1/4 Sec. cor.  
3-2

RECORD OF SURVEY  
PORTION OF BLOCK 1  
TOWN OF GREENVILLE  
PLUMAS COUNTY, CALIF.



LEGEND:

- Fence
- 1/2" x 18" Iron pipe set
- corners found as noted

This map correctly represents a survey made by me in conformance with the requirements of Chapter 15 of Division 3 of the Business and Professions Code at the request of:

H. A. Morel  
in August 1958 Marcus J. McBeen sr.  
Marcus J. McBeen sr. L.S.#2702

This map has been examined for conformance with the requirements of Chapter 15 of Division 3 of the Business and Professions Code this 3rd day of Sept 1958

A. J. Watson  
A. J. Watson, County Surveyor  
Plumas County, California

Basis of bearings is the Northeast line of Pine St. and the West line of Jesse St.  
Scale: 1"=50'

733

Filed for record this 8th day of September 1958, at 10 A. M. in Book 2 of Rec. of Survey at page 6 at the request of Marcus J. McBeen

Ida E. Hogan, by Ed. Rouse Deputy  
County Recorder, Plumas County

2RS6