

RECORD OF SURVEY
OF
A PORTION OF SW 1/4 OF NW 1/4
OF
SECTION 6, T24 N, R10E, MDM

NOTE:

THIS SURVEY ESTABLISHES THE PROPERTY CORNERS OF A PORTION OF THE SW 1/4 OF THE NW 1/4 OF SECTION 6, T24 N, R10E, MDM, OWNED BY CHARLES T. WAY, FORMERLY OWNED BY BARBARA WEMPLE, AND BEFORE THAT, BY HOWARD M. AND ALMA REAVES, AND DESCRIBED AS FOLLOWS:

BEGINNING AT A POINT WHICH BEARS N 322.8 FEET FROM THE 1/4 CORNER ON THE W SIDE OF SECTION 6, T24 N, R10E, MDM, RUN N 538.8 FEET, THENCE E 173.44 FEET, THENCE S 467.2 FEET, THENCE S 67° 34' W 187.64 FEET TO THE POINT OF BEGINNING.

4th COUNTY SURVEYOR'S CERTIFICATE 4th

THIS MAP HAS BEEN EXAMINED FOR CONFORMANCE WITH THE REQUIREMENTS OF CHAPTER 15 OF DIVISION 3 OF THE BUSINESS AND PROFESSIONS CODE THIS 1st DAY OF July, 1959.

James P. Flanagan
COUNTY SURVEYOR

FOUND A 1/2" IRON PIPE WITH PLUG AND NAIL AND L.S. TAG N° 2587, FROM WHICH A 36" BLAZED PINE TREE BEARS N 31° 10' E, 29.7 FEET AND NEAR WHICH STANDS ANOTHER TREE BEARING A STANDARD METAL SECTION CORNER MARKER INDICATING E 1/4 CORNER OF SECTION 1, T24 N, R9E, MDM. I ACCEPTED SAID PIPE AS GOOD, AND AS BEING THE CORRESPONDING W 1/4 CORNER OF SECTION 6, T24 N, R10E, MDM AND SET UP INSTRUMENT OVER SAME. I SHOT TACK IN UNDISTURBED AND CLEARLY MARKED HUB #1 OF A RANDOM LINE RUN BY LEONARD E. BOWSER OF SR MAURICE HELMKAMP-MUSSER BETWEEN SAID 1/4 CORNER AND SECTION CORNER TO NORTH IN A SURVEY MADE IN APRIL, 1958, FOR ELIZABETH E. WAUGH, PAGE 8, VOL. 2, RECORD OF SURVEY, PLUMAS COUNTY, CALIFORNIA, INSTRUMENT #1595 FILED 12/31/58. ACCORDING TO INFORMATION FROM AFOREMENTIONED LEONARD E. BOWSER, I DEFLECTED TO THE RIGHT 1° 47' 53" TO A BEARING ON SECTION LINE, AND THENCE PROCEEDED NORTH 322.8 FEET TO THE POINT OF BEGINNING, WHERE I SET A 3/4" CAPPED IRON PIPE. I CONTINUED NORTH ALONG THE SECTION LINE 538.8 FEET, SET 3/4" CAPPED IRON PIPE, SWUNG 90°, THENCE PROCEEDED EAST 173.44 FEET, AND SET ANOTHER 3/4" CAPPED IRON PIPE. I THEN SWUNG 90° AND PROCEEDED SOUTH 467.2 FEET, SET 3/4" CAPPED IRON PIPE, DEFLECTED 67° 34' AND PROCEEDED 187.64 FEET TO THE POINT OF BEGINNING. ALL 3/4" CAPPED IRON PIPE WERE TAGGED RCE-9211.

4th SURVEYOR'S CERTIFICATE 4th

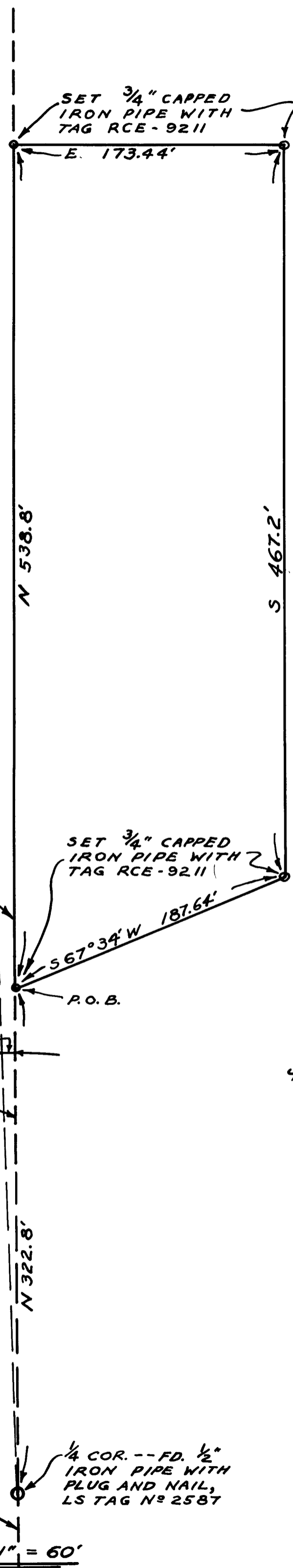
THIS MAP CORRECTLY REPRESENTS A SURVEY MADE BY ME OR UNDER MY DIRECTION IN CONFORMANCE WITH THE REQUIREMENTS OF CHAPTER 15 OF DIVISION 3 OF THE BUSINESS AND PROFESSIONS CODE AT THE REQUEST OF CHARLES T. WAY IN APRIL, 1959

William J. Way
RCE-9211



THE BASIS OF BEARINGS OF THIS SURVEY IS THE W LINE OF THE NW 1/4 OF SECTION 6, T24 N, R10E, MDM, WHICH EQUALS NORTH.

FD. HUB AND TACK MARKED HUB #1 - LEONARD E. BOWSER.



26
4th RECORDER'S CERTIFICATE 4th

FILED FOR RECORD THIS 1st DAY OF July, 1959, AT 11 A.M. IN BOOK 2 OFFICE OF SURVEY AT PAGE 11, AT THE REQUEST OF C. T. Way.

John Logan Growold
COUNTY RECORDER

1/4 COR. -- FD. 1/2" IRON PIPE WITH PLUG AND NAIL, LS TAG N° 2587

SCALE: 1" = 60'