

RECORD OF SURVEY GRIZZLY CREEK ACRES PORTION OF SECTION 17, T.23N. R.14E, M.D.M.

This map is not a subdivision and is filed in accordance with Section 11, 535, subsection #2, Chap 2, Art. 3, Business and professions code. Lots are one acre or more
Basis of bearings is from a polaris observation taken by me in Nov. 1958

Marcus J. McBeen sr. L.S #2702

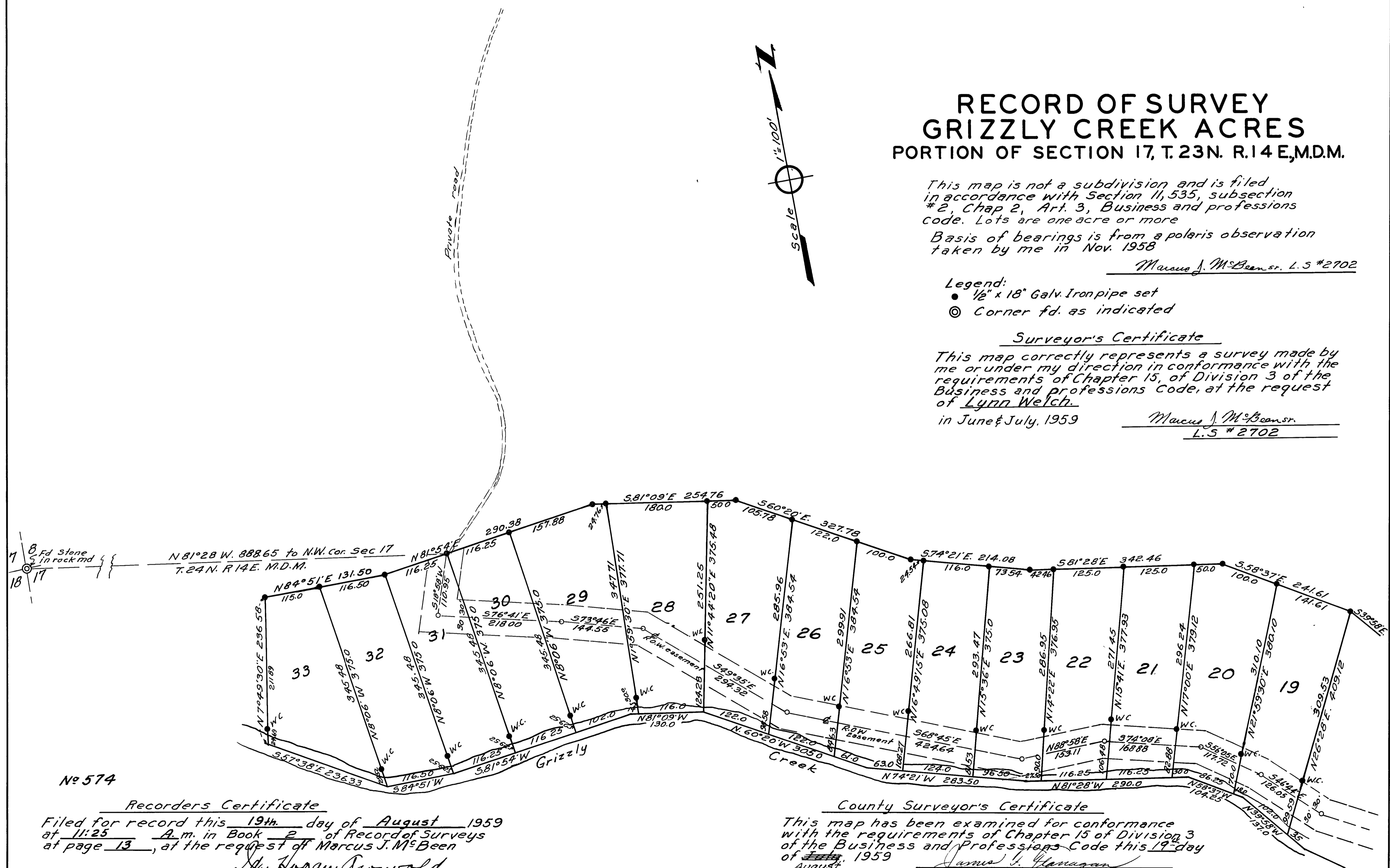
- Legend:
● 1/2" x 18" Galv. Iron pipe set
⊙ Corner fd. as indicated

Surveyor's Certificate

This map correctly represents a survey made by me or under my direction in conformance with the requirements of Chapter 15, of Division 3 of the Business and professions Code, at the request of Lynn Welch.

in June & July, 1959

Marcus J. McBeen sr.
L.S #2702



No 574

Recorders Certificate

Filed for record this 19th day of August 1959 at 11:25 A.m. in Book 2 of Record of Surveys at page 13, at the request of Marcus J. McBeen

Sh Logan Growold
Plumas County, Recorder

County Surveyor's Certificate

This map has been examined for conformance with the requirements of Chapter 15 of Division 3 of the Business and Professions Code this 19 day of August, 1959

James J. Gannagan
Plumas County Surveyor