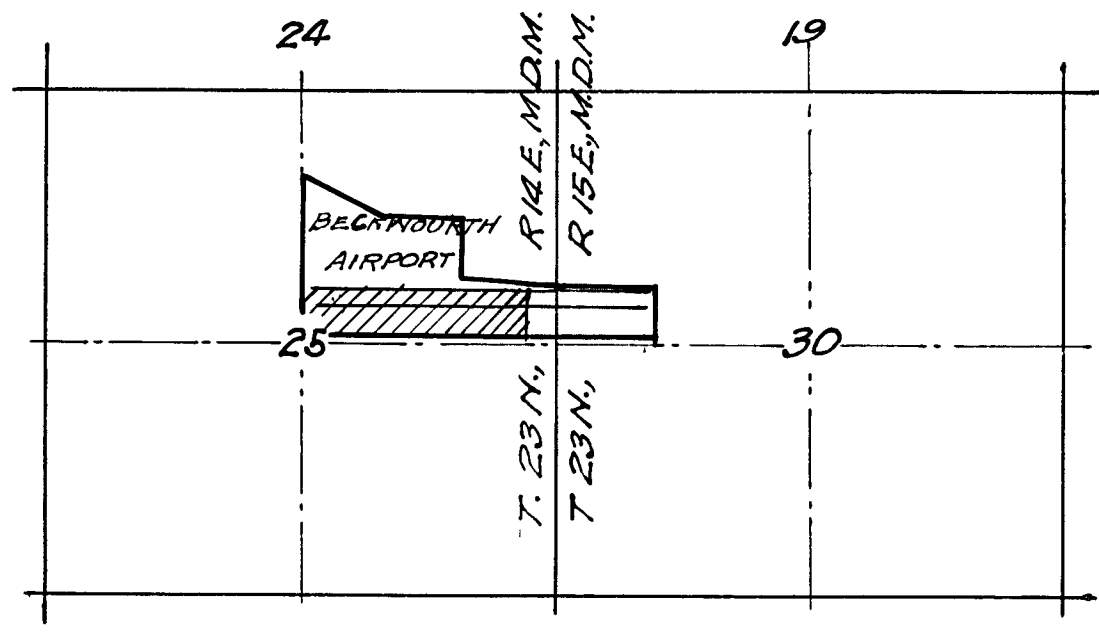


North 2194.6' to 1/4 S.C. 24  
Prop. Line: T. 23 N., R. 14 E., M.D.M.

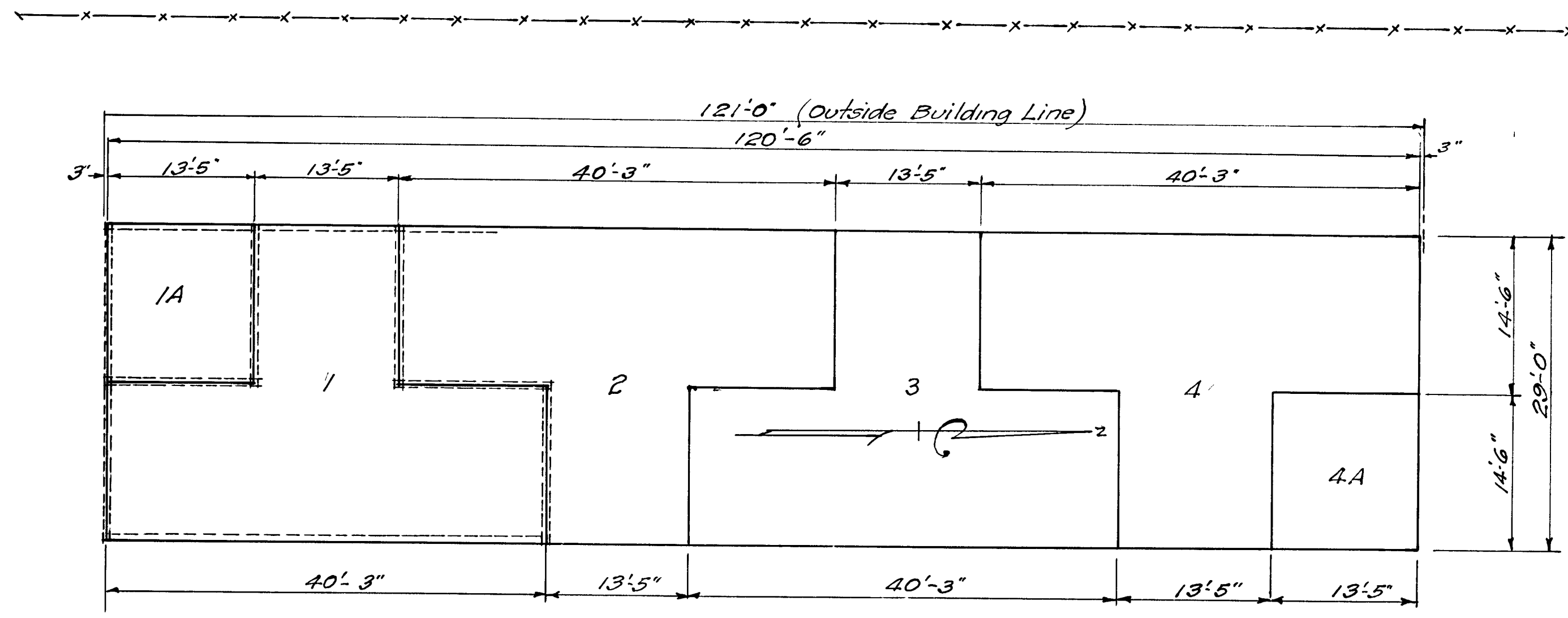
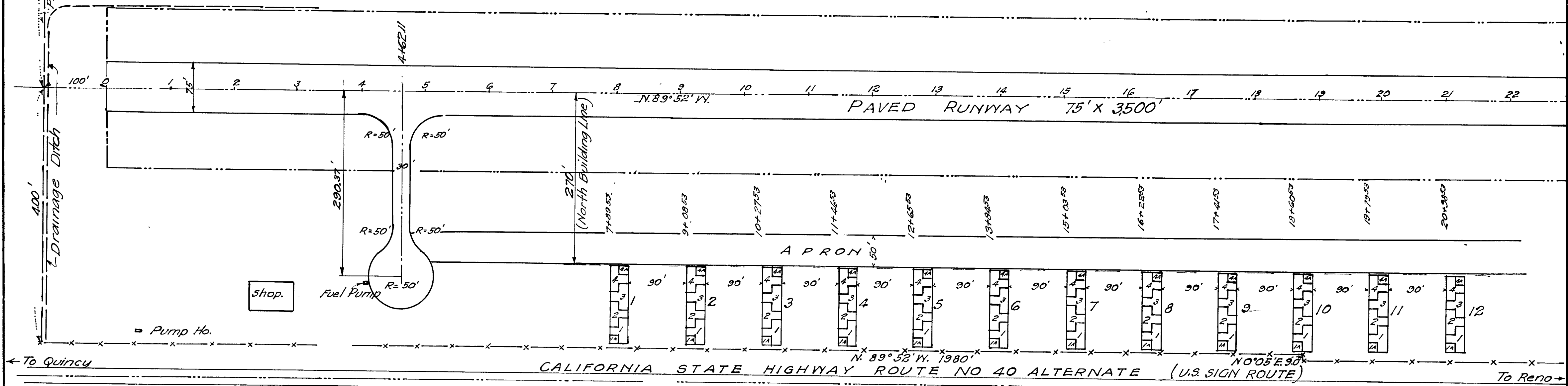
**COUNTY SURVEYOR'S CERTIFICATE**  
This map was compiled principally from office records of the County Surveyor's Office from surveys made during past years, and from recent surveys made by me and by Marcus J. Meehan, Sr., L.S. #2702, in locating the hangar lots shown hereon, in conformance with the requirements of Chapter 15 of Division 3, of the Business and Professions Code at the request of the Board of Supervisors of Plumas County, in October 1959.

Dated: October 22, 1959

*James F. Flanagan*  
James F. Flanagan, R.C.E. No 292  
County Surveyor of Plumas County.



# 1329  
**RECORDER'S CERTIFICATE**  
Filed for record this 21 day of Oct 1959  
at 1:45 p.m. in Book 2 of R.F.S. at page 15  
at the request of Board of Supervisors.  
*Wm. Hogan Junvold*  
Plumas County Recorder



Basis of Bearings taken from alignment of center line of state Highway.

**RECORD OF SURVEY**  
PORTION OF BECKWOURTH AIRPORT  
SHOWING HANGAR SPACE FOR LEASING.  
IN THE S 1/2 OF NE 1/4 OF SEC. 25, T. 23 N., R. 14 E.  
M.D.M.

October 21, 1959

Scale: 1"=100'  
1"=2000'  
1"=10'

ENLARGED SCALE OF TYPICAL HANGAR BLOCK  
Scale: 1"=10'-0"