

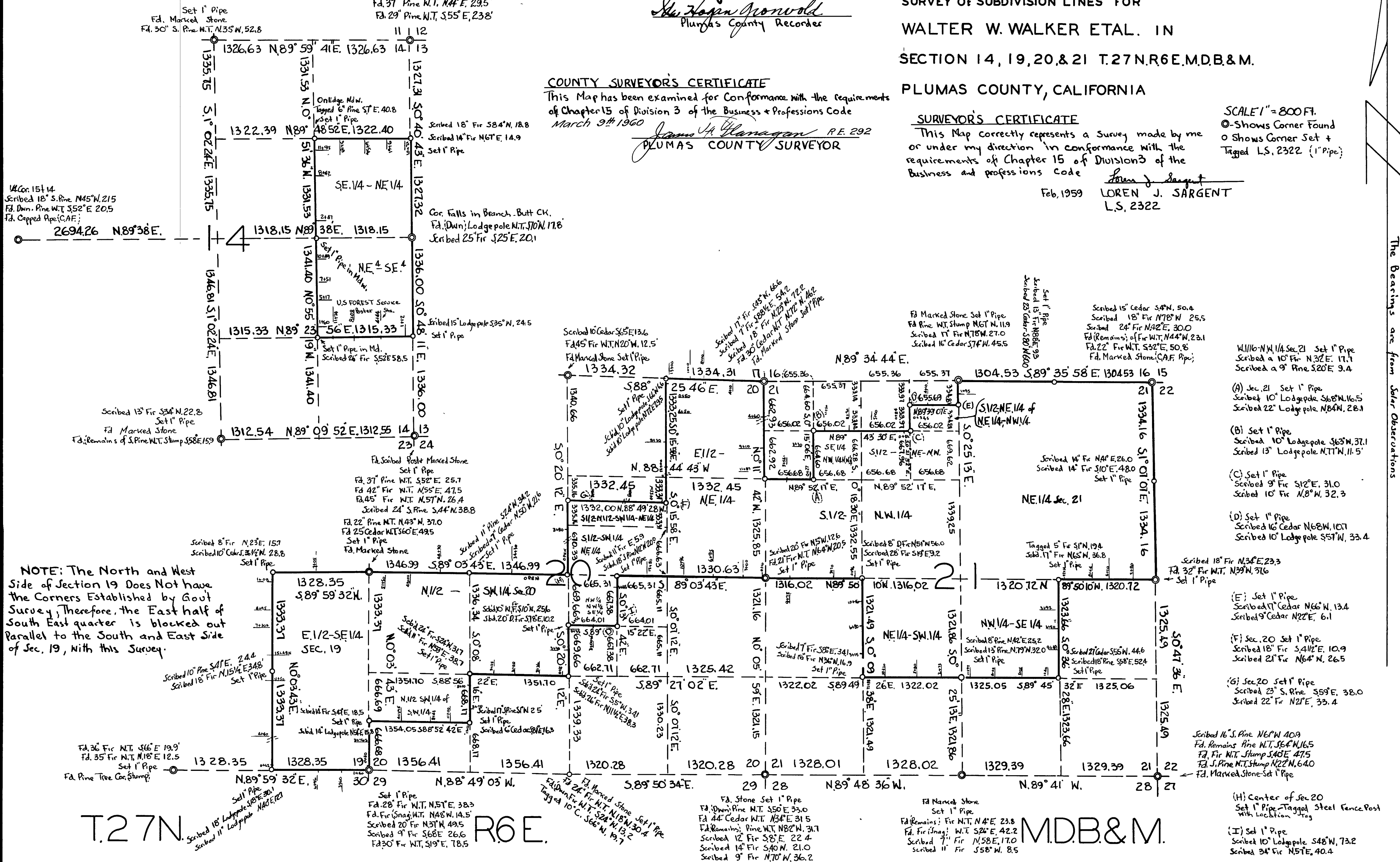
#2225 RECORDER'S CERTIFICATE

Set 1" Pipe Filed for record this 9th Day of March 1960 in Book 2 of Rec. & Survey at Page 25
Walter W. Walker
Plumas County Recorder

SURVEY OF SUBDIVISION LINES FOR WALTER W. WALKER ETAL. IN SECTION 14, 19, 20, & 21 T.27N. R.6E. M.D.B. & M. PLUMAS COUNTY, CALIFORNIA

COUNTY SURVEYOR'S CERTIFICATE This Map has been examined for conformance with the requirements of Chapter 15 of Division 3 of the Business & Professions Code March 9th 1960
James A. Glanigan P.E. 292
PLUMAS COUNTY SURVEYOR

SURVEYOR'S CERTIFICATE This Map correctly represents a Survey made by me or under my direction in conformance with the requirements of Chapter 15 of Division 3 of the Business and Professions Code
Loren J. Sargent
Feb, 1959 LOREN J. SARGENT L.S. 2322
SCALE 1" = 800 FT.
O - Shows Corner Found
O - Shows Corner Set + Tagged L.S. 2322 (1" Pipe)



U.S. Con. 15414 Scribed 18" S. Pine N45°W, 215 F.d. Down. Pine W.T. S52°E, 20.5 F.d. Capped Pipe (CAF)

NOTE: The North and West Side of Section 19 Does Not have the Corners Established by Govt Survey, Therefore, the East half of South East quarter is blocked out Parallel to the South and East Side of Sec. 19, With this Survey.

- W 1/16 - N 1/4 Sec. 21 Set 1" Pipe Scribed a 10" Fir N32°E, 17.7 Scribed a 9" Pine S20°E, 9.4
- (A) Sec. 21 Set 1" Pipe Scribed 10" Lodgepole S68°W, 16.5 Scribed 22" Lodgepole N84°W, 28.1
- (B) Set 1" Pipe Scribed 10" Lodgepole S63°W, 37.1 Scribed 13" Lodgepole N77°W, 11.5'
- (C) Set 1" Pipe Scribed 9" Fir S12°E, 31.0 Scribed 10" Fir N8°W, 32.3
- (D) Set 1" Pipe Scribed 16" Cedar N68°W, 107 Scribed 10" Lodgepole S57°W, 33.4
- (E) Set 1" Pipe Scribed 17" Cedar N66°W, 13.4 Scribed 9" Cedar N22°E, 6.1
- (F) Sec. 20 Set 1" Pipe Scribed 18" Fir S41 1/2°E, 10.9 Scribed 21" Fir N64°W, 26.5
- (G) Sec. 20 Set 1" Pipe Scribed 23" S. Pine S59°E, 38.0 Scribed 22" Fir N21°E, 33.4
- (H) Center of Sec 20 Set 1" Pipe - Tagged Steel Fence Post with Location Tag
- (I) Set 1" Pipe Scribed 10" Lodgepole S48°W, 73.2 Scribed 34" Fir N57°E, 40.4

The Bearings are from Solar Observations

T.27N. R.6E. M.D.B. & M.