

**SURVEYOR'S CERTIFICATE**

This map correctly represents a survey made by me or under my direction in conformance with the requirements of Chapter 15 of Division 3 of the Business and Professions Code at the request of United States Forest Service. in October 1952

*A. J. Watson*

R.C.E. No. 2554

**COUNTY SURVEYOR'S CERTIFICATE**

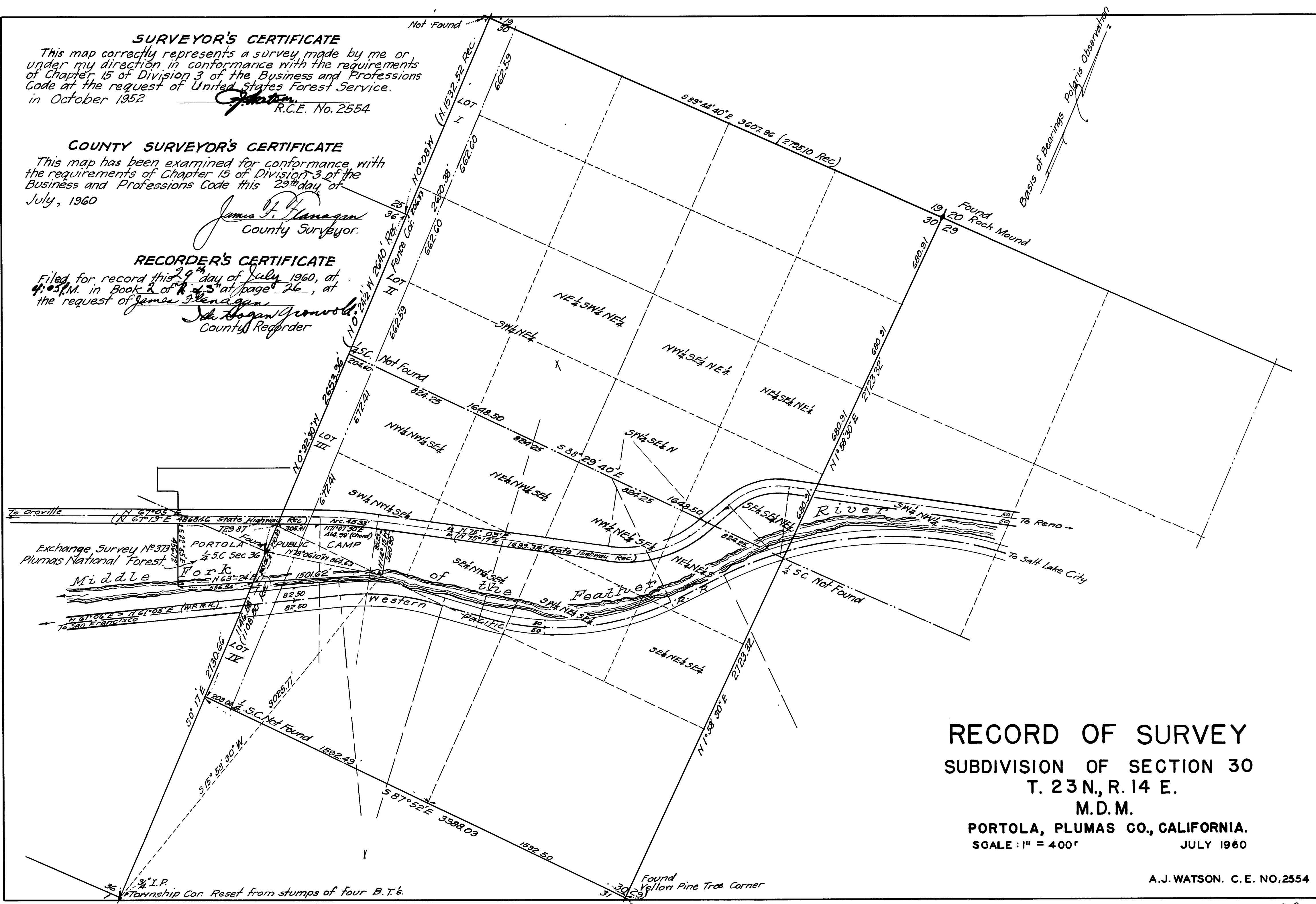
This map has been examined for conformance with the requirements of Chapter 15 of Division 3 of the Business and Professions Code this 29<sup>th</sup> day of July, 1960

*James F. Flanagan*  
County Surveyor.

**RECORDER'S CERTIFICATE**

Filed for record this 29<sup>th</sup> day of July 1960, at 4:03 P.M. in Book 2 of R. 43 at page 26, at the request of James Flanagan

*John Hogan Gronwald*  
County Recorder



**RECORD OF SURVEY**  
**SUBDIVISION OF SECTION 30**  
**T. 23 N., R. 14 E.**  
**M.D.M.**  
**PORTOLA, PLUMAS CO., CALIFORNIA.**  
 SCALE: 1" = 400'      JULY 1960

A.J. WATSON. C. E. NO. 2554