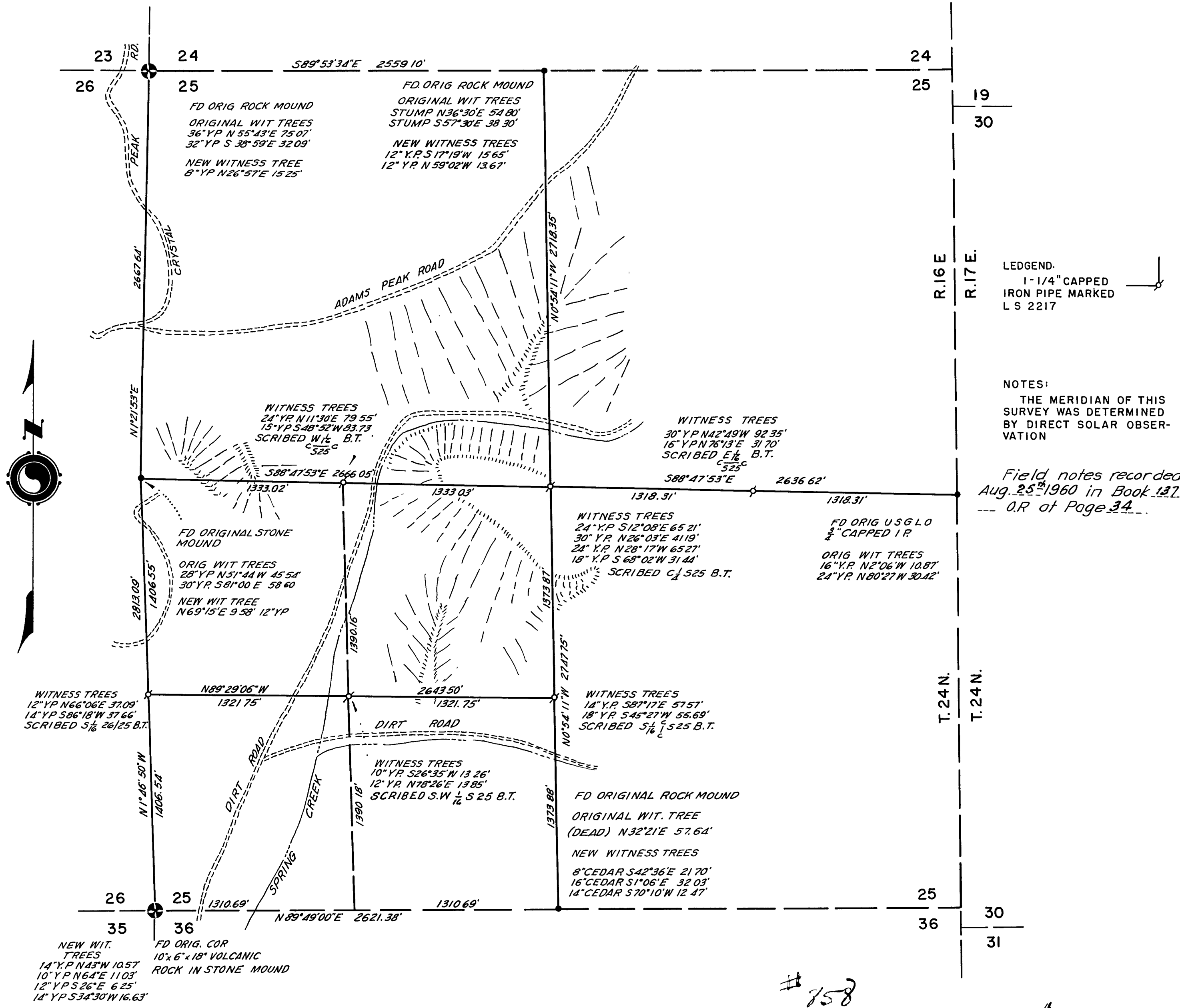


RECORD OF SURVEY  
**PORTIONS OF SECTION 25**  
**T.24N., R.16E. M.D.B. & M.**  
**PLUMAS COUNTY, CALIFORNIA**

SCALE 1" = 500'

JULY 1960

BAILIFF & BUTZ  
 SURVEYORS & ENGINEERS



I hereby certify that this plat correctly represents a survey made under my direction in conformance with the requirements of Chapter 15, Division 3 of the Business and Professions Code in July 1960.

This plat has been examined for conformance with the requirements of Chapter 15, Division 3 of the Business and Professions Code this 25<sup>th</sup> day of August 1960.

# 758  
 Filed for record this 25<sup>th</sup> day of Aug. 1960 at 2 hrs, 5 min, P.M. in Book 2 of Surveys, at Page 29 at the request of the United States Forest Service.

*Forrest B. Bailiff*  
 LICENSED LAND SURVEYOR NO. 2217

*James P. Panagan*  
 COUNTY SURVEYOR OF PLUMAS COUNTY

*John Logan Gronwald*  
 COUNTY RECORDER OF PLUMAS COUNTY