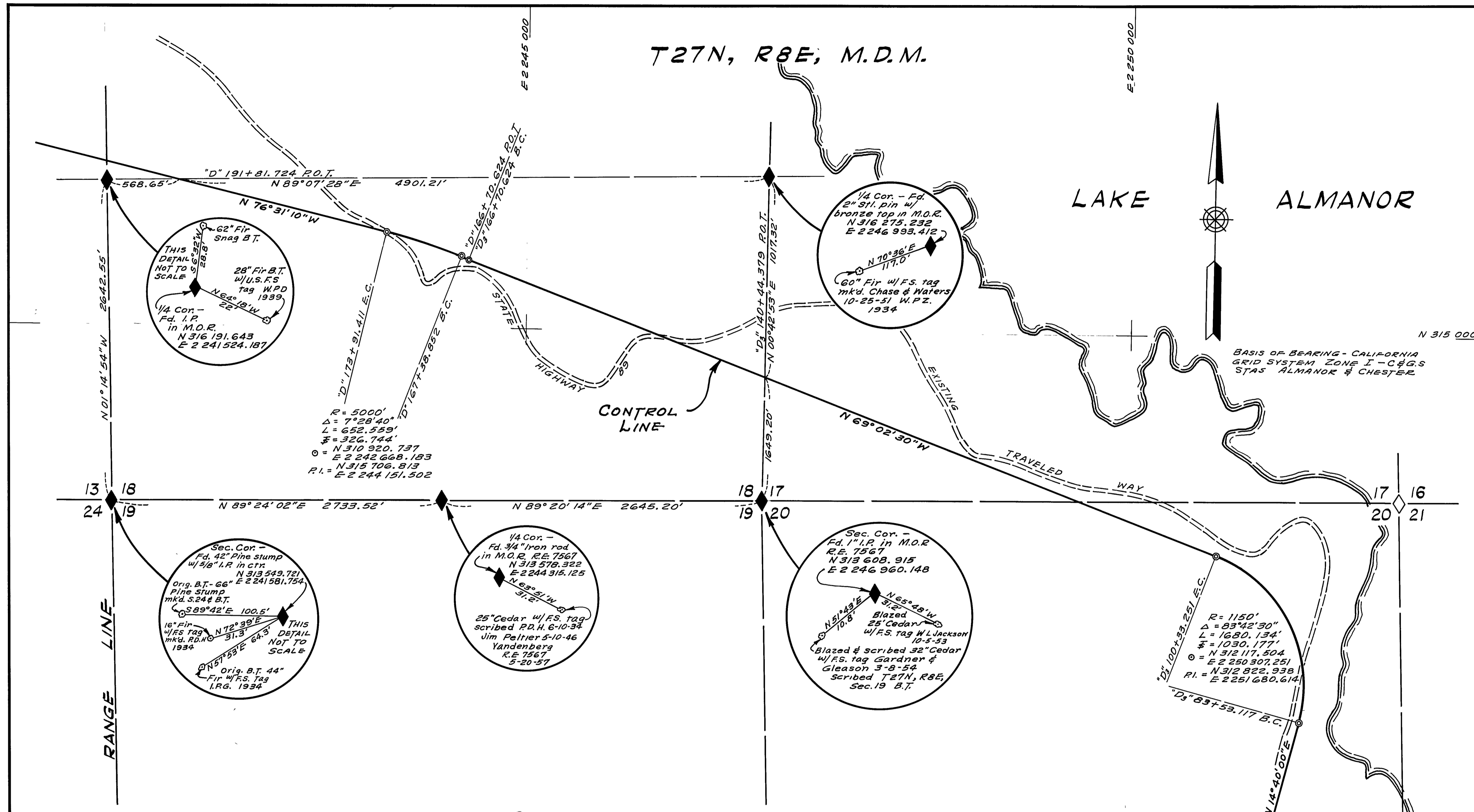


T27N, R8E, M.D.M.



LAKE ALMANOR



BASIS OF BEARING - CALIFORNIA
GRID SYSTEM ZONE I - C&G.S.
STAS ALMANOR & CHESTER

R = 5000'
Δ = 7°28'40"
L = 652.559'
F = 326.744'
O = N 310 920.737
E = 2 242 668.183
R.I. = N 315 706.813
E = 2 244 151.502

R = 1150'
Δ = 83°42'30"
L = 1680.134'
F = 1030.177'
O = N 312 117.504
E = 2 250 307.251
R.I. = N 312 822.938
E = 2 251 680.614

THIS MAP CORRECTLY REPRESENTS A SURVEY MADE BY ME OR UNDER MY DIRECTION IN CONFORMANCE WITH THE REQUIREMENTS OF CHAPTER 15 OF DIVISION 3 OF THE BUSINESS AND PROFESSIONS CODE AT THE REQUEST OF CALIFORNIA DIVISION OF HIGHWAYS IN NOVEMBER 1960
2.5 Miles
H.S. MILES, R.E. 5569

DISTANCES AND BEARINGS SHOWN HEREON ARE BASED ON THE CALIFORNIA COORDINATE SYSTEM, ZONE I. DISTANCES SHOWN ARE GRID DISTANCES. DIVIDE DISTANCES SHOWN BY .99973661 TO OBTAIN GROUND LEVEL DISTANCES.

LEGEND

- ◆ FOUND SECTION CORNERS
- ◇ CORNERS NOT FOUND
- ⊙ HUB & TACK WITH R.E. TAG TO BE REPLACED BY CONCRETE MONUMENT WITH BRASS CAP DURING HIGHWAY CONSTRUCTION

SURVEY OF A CONTROL LINE FOR STATE HIGHWAY PURPOSES
IN T27N, R8E, M.D.M., SEC. 17 & 18
PLUMAS COUNTY, CALIFORNIA
NOVEMBER 1960 SCALE 1" = 500'

2358
FILED FOR RECORD THIS
13th DAY OF Jan, 1961
AT 9:11 A.M. IN BOOK 2
OF RGS AT PAGE 39, AT
THE REQUEST OF
James F. Flanagan, Co. Surveyor
Plumas County Recorder

THIS MAP HAS BEEN EXAMINED FOR CONFORMANCE WITH THE REQUIREMENTS OF CHAPTER 15 OF DIVISION 3 OF THE BUSINESS AND PROFESSIONS CODE. THIS 12th DAY OF JANUARY 1961.
James V. Hudspeth
COUNTY SURVEYOR