

E 215 000

T 28 N, R 7 E, M.D.M

T 27 N, R 7 E, M.D.M.

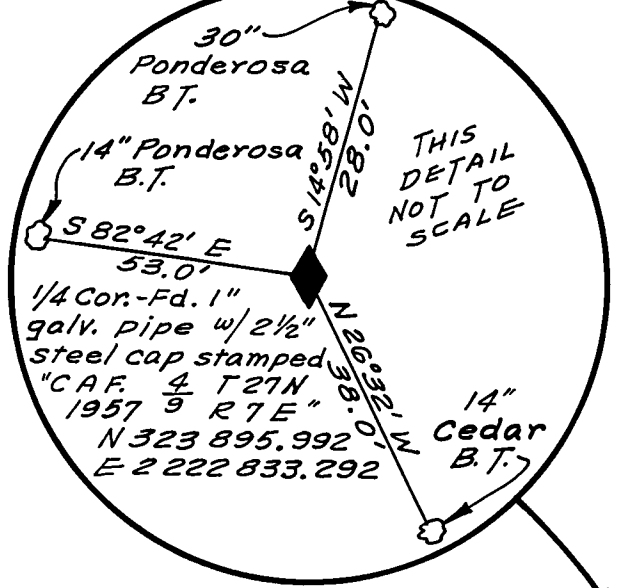
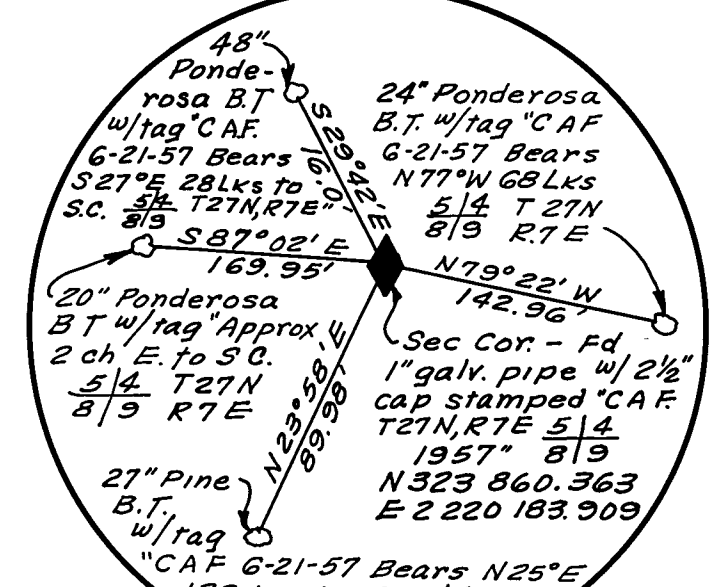
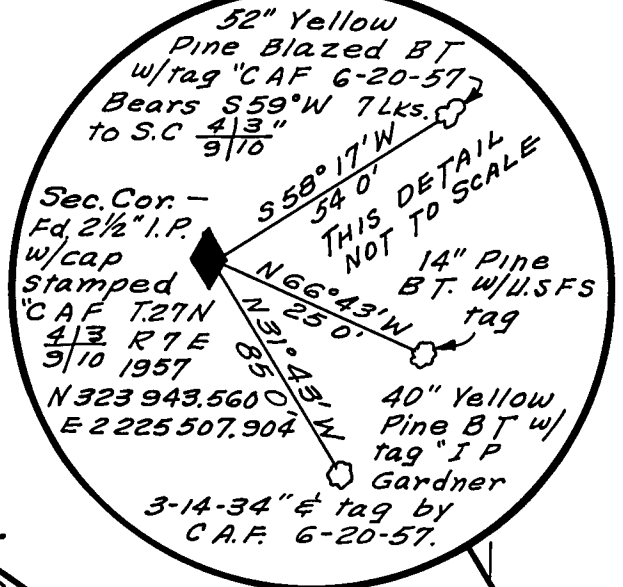
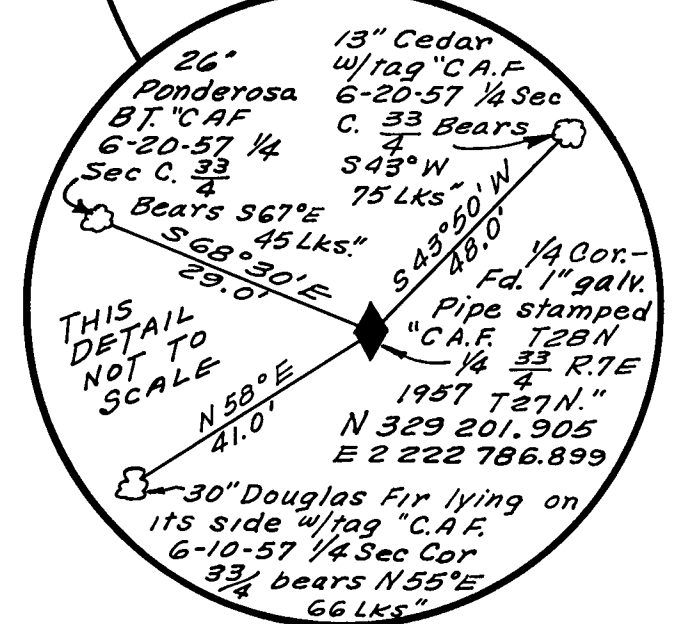
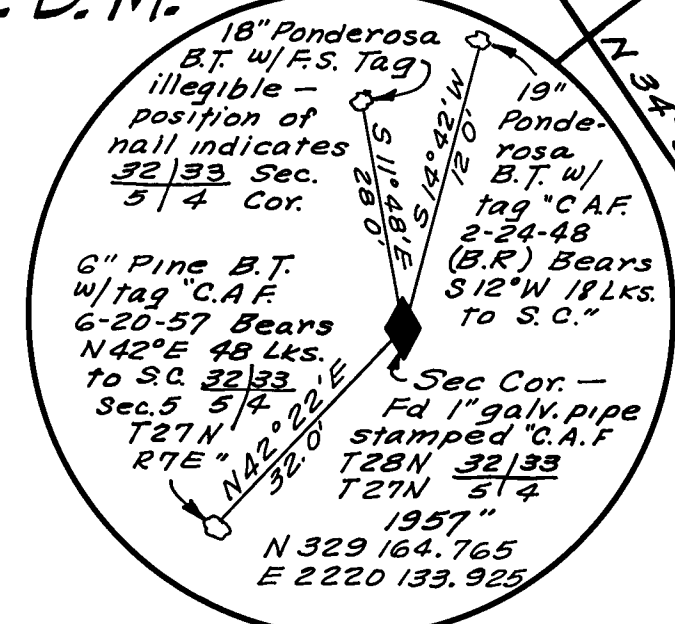
E 220 000

TOWNSHIP LINE
S 89° 11' 53" W 2653.23'

E 225 000

33 34
4 3

THIS
DETAIL
NOT TO
SCALE



BASIS OF BEARING - CALIFORNIA GRID SYSTEM, ZONE I - C&G S STAS ALMADOR & CHESTER

THIS
DETAIL
NOT TO
SCALE

THIS MAP CORRECTLY REPRESENTS A SURVEY MADE BY ME OR UNDER MY DIRECTION IN CONFORMANCE WITH THE REQUIREMENTS OF CHAPTER 15 OF DIVISION 3 OF THE BUSINESS AND PROFESSIONS CODE AT THE REQUEST OF CALIFORNIA DIVISION OF HIGHWAYS, IN NOVEMBER 1960.

W.S. Miles
H.S. MILES, R. E. 5569

THIS MAP HAS BEEN EXAMINED FOR CONFORMANCE WITH THE REQUIREMENTS OF CHAPTER 15 OF DIVISION 3 OF THE BUSINESS AND PROFESSIONS CODE THIS 12th DAY OF January 1961.

James H. Plauger
COUNTY SURVEYOR

DISTANCES AND BEARINGS SHOWN HEREON ARE BASED ON THE CALIFORNIA COORDINATE SYSTEM, ZONE No. 1. DISTANCES SHOWN ARE GRID DISTANCES. DIVIDE DISTANCES SHOWN BY .99973251 TO OBTAIN GROUND LEVEL DISTANCES.

LEGEND

- ◆ FOUND SECTION CORNERS
- ◇ CORNERS NOT FOUND
- ◎ HUB & TACK WITH R.E. TAG TO BE REPLACED BY CONCRETE MONUMENT WITH BRASS CAP DURING HIGHWAY CONSTRUCTION

FILED FOR RECORD THIS
13th DAY OF Jan, 1961.
AT 9:14 A.M. IN BOOK 2
OF R. of S. AT PAGE 42, AT
THE REQUEST OF
James H. Plauger, Co Surveyor
Deborah Gronold
COUNTY RECORDER

**SURVEY OF A
CONTROL LINE
FOR
STATE HIGHWAY PURPOSES
IN T 27 N, R 7 E, M.D.M., SEC. 4 & 5
PLUMAS COUNTY, CALIFORNIA
NOVEMBER 1960 SCALE 1" = 500'**