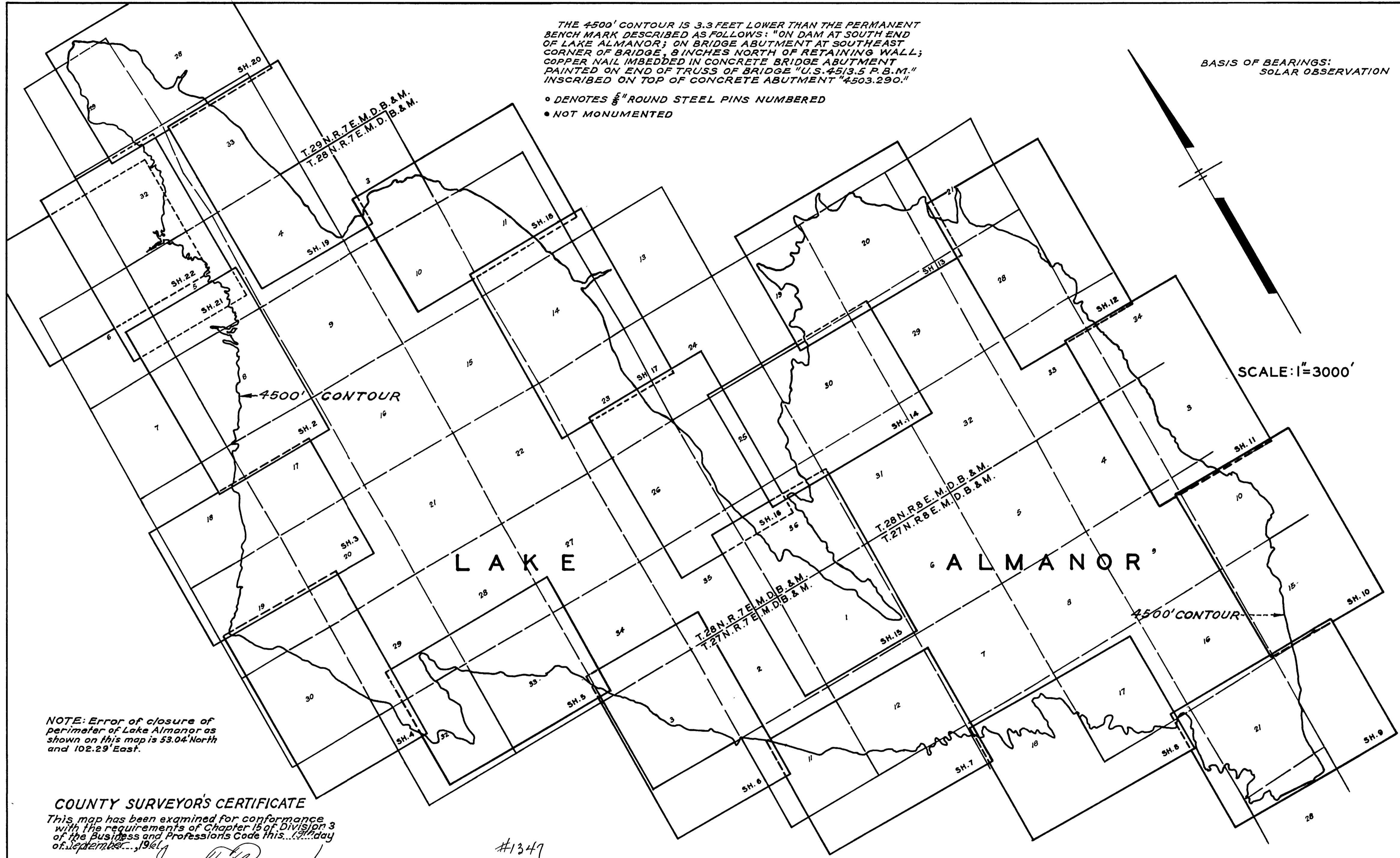


THE 4500' CONTOUR IS 3.3 FEET LOWER THAN THE PERMANENT BENCH MARK DESCRIBED AS FOLLOWS: "ON DAM AT SOUTH END OF LAKE ALMANOR; ON BRIDGE ABUTMENT AT SOUTHEAST CORNER OF BRIDGE; 8 INCHES NORTH OF RETAINING WALL; COPPER NAIL IMBEDDED IN CONCRETE BRIDGE ABUTMENT PAINTED ON END OF TRUSS OF BRIDGE "U.S. 4513.5 P.B.M." INSCRIBED ON TOP OF CONCRETE ABUTMENT "4503.290."

- DENOTES 5/8" ROUND STEEL PINS NUMBERED
- NOT MONUMENTED

BASIS OF BEARINGS:
SOLAR OBSERVATION

SCALE: 1"=3000'



NOTE: Error of closure of perimeter of Lake Almanor as shown on this map is 53.04' North and 102.29' East.

COUNTY SURVEYOR'S CERTIFICATE

This map has been examined for conformance with the requirements of Chapter 15 of Division 3 of the Business and Professions Code this 19th day of September, 1961.

Jessie C. Flanagan
County Surveyor

SURVEYOR'S CERTIFICATE

This map correctly represents a survey made under my direction in conformance with the requirements of Chapter 15 of Division 3 of the Business and Professions Code at the request of Pacific Gas and Electric Company in 1954 and 1955.

Paul Higginbotham
L.S. No. 2750

#1347

RECORDER'S CERTIFICATE

Filed for record this 19th day of Sept., 1961 at 3:55 p.m. in Book 2 of R. 7 at page 47 at the request of Pacific Gas and Electric Company

Arthur Gronwall
County Recorder of Plumas Co.

RECORD OF SURVEY
OF 4500' CONTOUR OF LAKE ALMANOR
PLUMAS COUNTY, CALIFORNIA
SHEET 1 OF 22 SHEETS