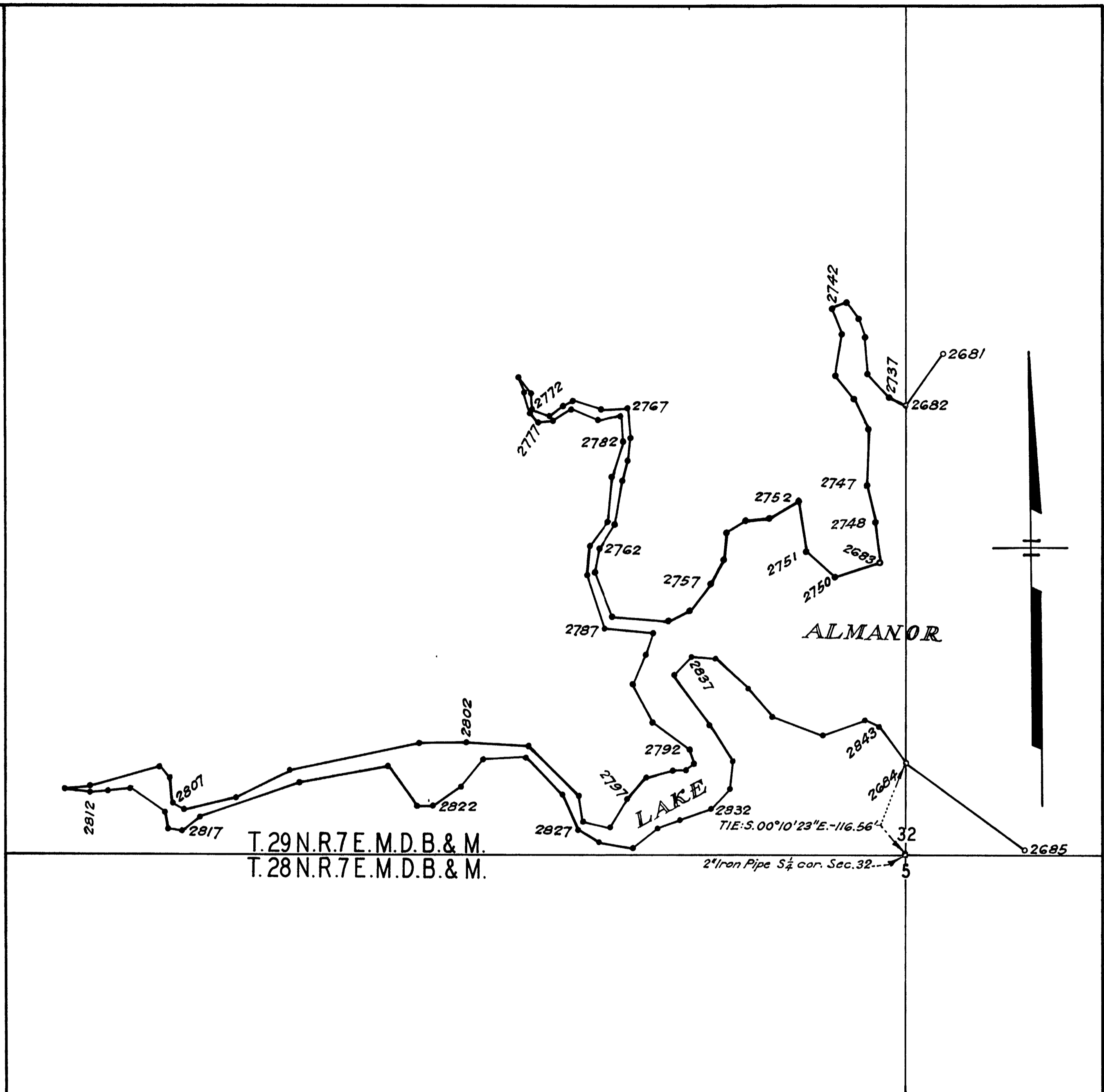


4500' Contour Line						
Point No.	Bearing	Distance Feet	Point No.	Bearing	Distance Feet	
2682	N.64°27'00"W.	23.00	to	2818	N.71°15'00"E.	136.00
2737	N.43°50'00"W.	40.00	"	2819	N.79°48'00"E.	115.20
2738	N.04°00'00"W.	48.00	"	2820	S.37°04'30"E.	62.50
2739	N.22°15'00"W.	25.00	"	2821	N.88°28'00"E.	21.50
2740	N.36°30'30"W.	24.30	"	2822	N.54°46'00"E.	43.00
2741	S.69°43'30"W.	19.80	"	2823	N.39°05'00"E.	45.00
2742	S.20°46'00"E.	34.00	"	2824	N.86°48'30"E.	55.00
2743	S.09°34'00"W.	54.20	"	2825	S.44°19'30"E.	67.20
2744	S.38°45'00"E.	37.50	"	2826	S.24°24'00"E.	48.50
2745	S.28°53'00"E.	42.50	"	2827	S.57°27'00"E.	30.50
2746	S.01°49'00"W.	72.00	"	2828	S.80°51'00"E.	47.00
2747	S.12°58'00"E.	49.00	"	2829	N.52°37'00"E.	41.00
2748	S.07°02'00"E.	52.40	"	2830	N.68°42'00"E.	29.90
2683	S.72°26'00"W.	61.00	"	2831	N.71°58'30"E.	42.00
2750	N.48°54'00"W.	48.50	"	2832	N.42°20'00"E.	37.00
2751	N.07°30'00"W.	66.80	"	2833	N.05°24'00"E.	33.00
2752	S.58°50'00"W.	45.00	"	2834	N.32°58'00"W.	57.00
2753	S.83°43'00"W.	32.20	"	2835	N.34°47'00"W.	78.50
2754	S.57°12'30"W.	28.20	"	2836	N.43°47'30"E.	32.00
2755	S.07°08'00"W.	34.00	"	2837	S.85°30'00"E.	30.50
2756	S.26°59'30"W.	33.90	"	2838	S.47°19'00"E.	57.50
2757	S.39°18'00"W.	44.00	"	2839	S.41°07'00"E.	47.00
2758	S.64°00'00"W.	29.90	"	2840	S.69°14'00"E.	70.30
2759	N.85°30'00"W.	73.00	"	2841	N.69°51'00"E.	58.00
2760	N.22°30'00"W.	61.00	"	2842	S.69°25'00"E.	19.00
2761	N.12°30'00"E.	31.00	"	2843	S.36°07'00"E.	68.10
2762	N.29°55'00"E.	38.00	"	2684		
2763	N.09°55'00"E.	54.50	"			
2764	N.16°39'00"E.	28.00	"			
2765	N.06°00'00"E.	30.00	"			
2766	N.06°45'30"W.	35.50	"			
2767	S.88°02'00"W.	35.00	"			
2768	N.72°15'00"W.	37.00	"			
2769	S.63°53'00"W.	14.00	"			
2770	S.52°55'00"W.	23.00	"			
2771	N.69°05'00"W.	25.00	"			
2772	N.02°26'00"W.	21.00	"			
2773	N.37°56'30"W.	27.10	"			
2774	S.21°14'00"E.	21.00	"			
2775	S.15°33'00"E.	27.00	"			
2776	S.41°39'00"E.	16.50	"			
2777	N.82°12'00"E.	18.50	"			
2778	N.57°45'00"E.	29.50	"			
2779	S.65°55'00"E.	36.50	"			
2780	N.80°53'30"E.	31.90	"			
2781	S.03°55'00"E.	32.00	"			
2782	S.17°36'00"W.	47.50	"			
2783	S.04°35'00"W.	57.00	"			
2784	S.37°24'00"W.	39.00	"			
2785	S.05°39'00"W.	38.00	"			
2786	S.18°25'00"E.	71.00	"			
2787	S.84°22'00"E.	64.00	"			
2788	S.20°41'00"W.	27.90	"			
2789	S.22°50'00"W.	42.00	"			
2790	S.27°39'00"E.	54.60	"			
2791	S.53°00'30"E.	59.20	"			
2792	S.17°10'00"E.	18.00	"			
2793	S.50°54'00"W.	12.50	"			
2794	N.88°30'00"W.	17.50	"			
2795	S.74°23'00"W.	37.00	"			
2796	S.40°04'00"W.	37.00	"			
2797	S.33°00'00"W.	42.00	"			
2798	N.78°13'00"W.	36.50	"			
2799	N.10°05'00"W.	33.00	"			
2800	N.45°04'30"W.	91.10	"			
2801	N.87°04'00"W.	81.00	"			
2802	S.89°31'00"W.	61.00	"			
2803	S.78°21'30"W.	167.90	"			
2804	S.63°21'00"W.	79.00	"			
2805	S.76°36'00"W.	69.00	"			
2806	N.57°28'00"W.	16.50	"			
2807	N.06°52'00"W.	31.40	"			
2808	N.40°52'30"W.	21.30	"			
2809	S.73°40'00"W.	93.50	"			
2810	S.83°32'00"W.	33.30	"			
2811	S.84°56'00"E.	32.00	"			
2812	N.86°20'00"E.	23.00	"			
2813	N.82°35'00"E.	30.00	"			
2814	S.55°01'00"E.	53.20	"			
2815	S.06°05'00"E.	22.50	"			
2816	S.82°46'00"E.	20.50	"			
2817	N.48°25'00"E.	29.00	"			



SCALE: 1" = 100'

RECORD OF SURVEY
 OF 4500' CONTOUR OF LAKE ALMANOR
 PLUMAS COUNTY, CALIFORNIA
 SHEET 22 OF 22 SHEETS