

SURVEYORS CERTIFICATE

This map correctly represents a survey made by me or under my direction in conformance with the requirements of Chapter 15 of Division 3 of the Business and Professions Code at the request of ELMER WILLHOITE, et al in September 1961.

Russell Avery
RUSSELL AVERY
LS 3082

COUNTY SURVEYORS CERTIFICATE

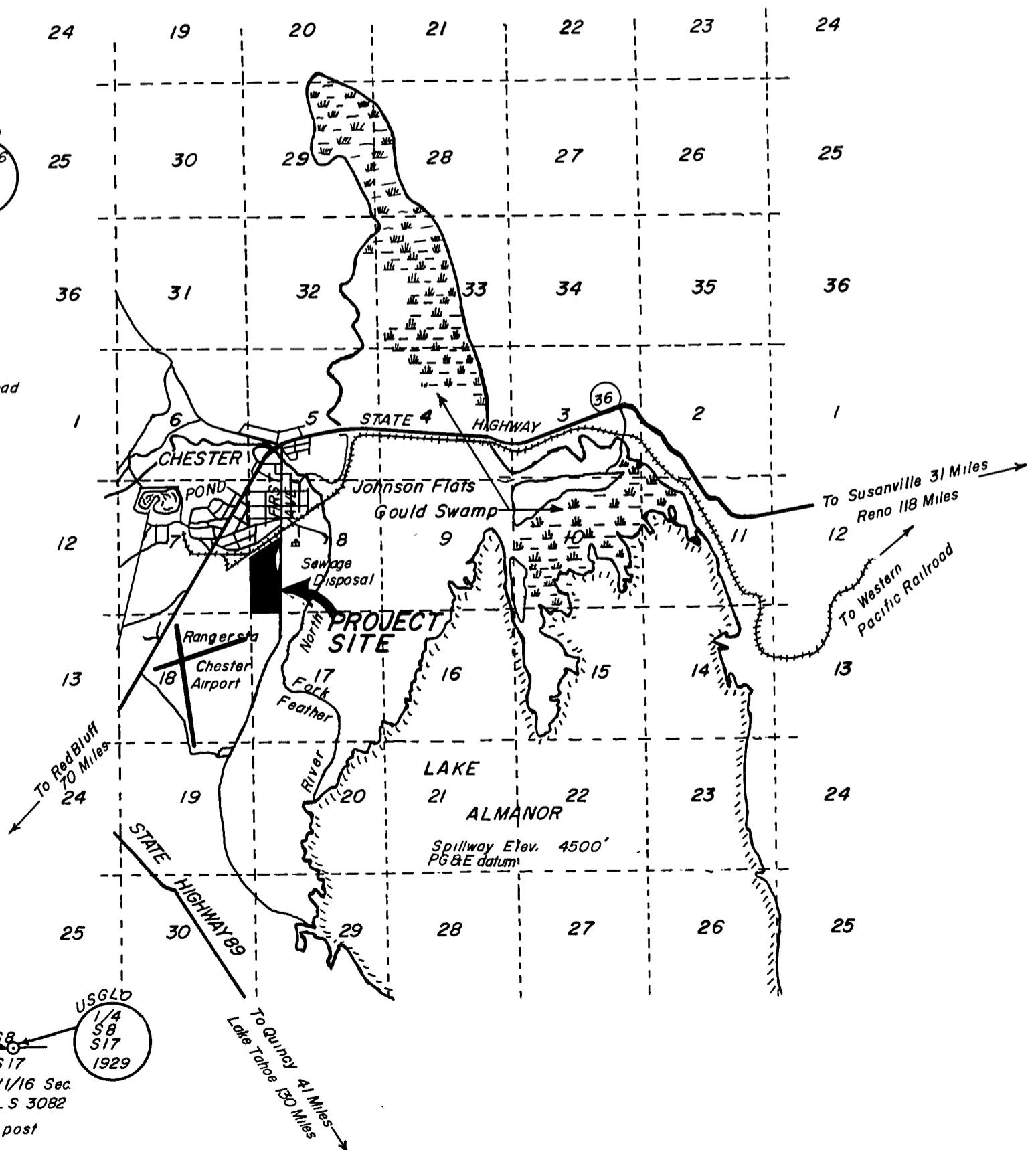
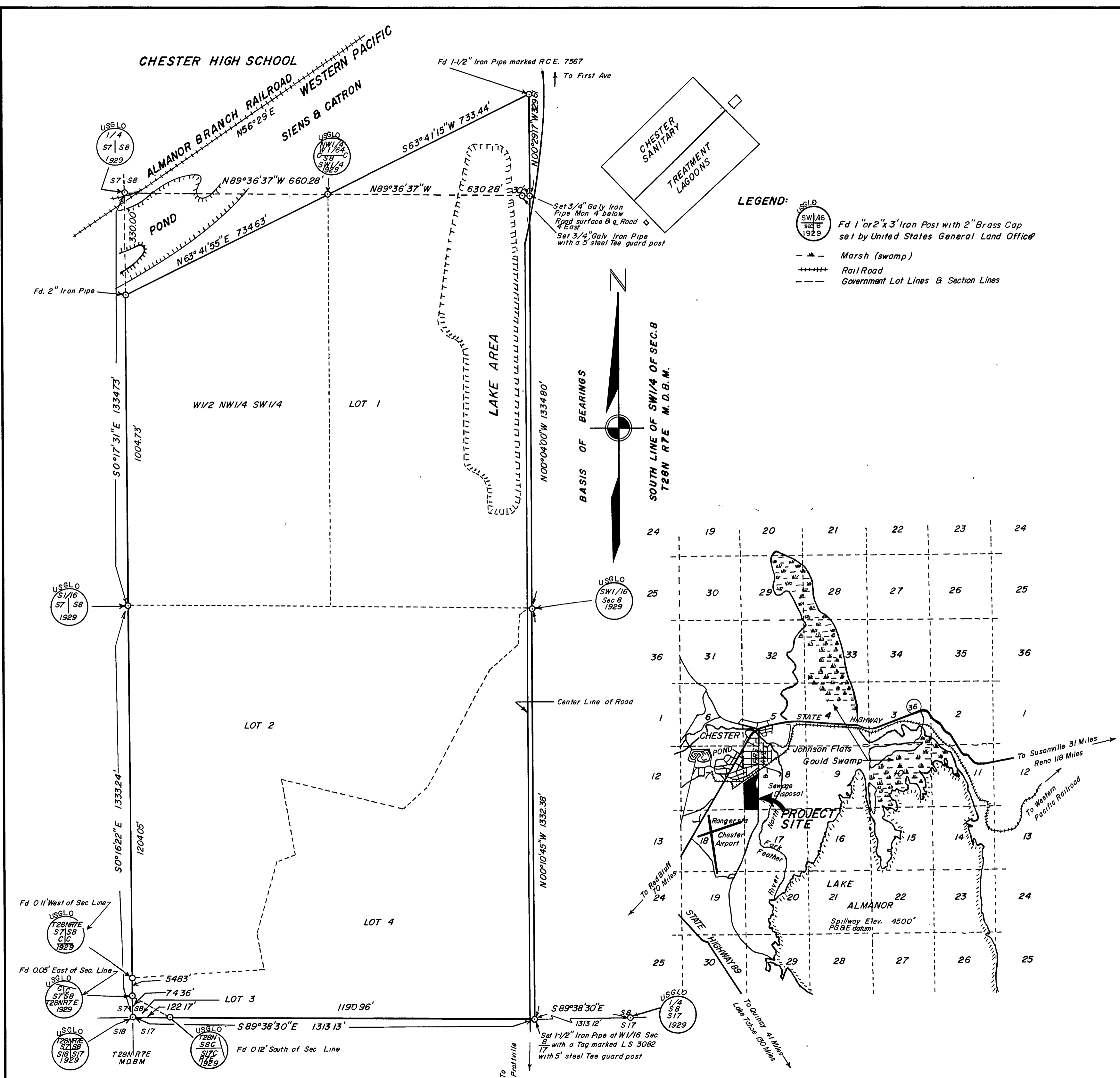
This map has been examined for conformance with the requirements of Chapter 15 of Division 3 of the Business and Professions Code this 8th day of Dec. 1961.

Marcus J. McKeon
DEPUTY COUNTY SURVEYOR

2274 RECORDERS CERTIFICATE

Recorded in the office of the Recorder of the County of PLUMAS, State of CALIFORNIA at the request of ELMER WILLHOITE, et al the 8 day of December 1961 at 35 minutes past 2 P.M. O'Clock in book 2 of maps at page 73.

She Logan Gronwald
PLUMAS COUNTY RECORDER



RECORD SURVEY MAP OF A PORTION OF THE W1/2 OF SW 1/4 SECTION 8, T28N R7E M.D.B.M.

SURVEYED AT THE REQUEST OF ELMER WILLHOITE, ET AL

Scale - 1"=200' September 1961

OFFICE OF AVERY & GRIMES ENGINEERS & SURVEYORS 550-99E RED BLUFF, CALIFORNIA