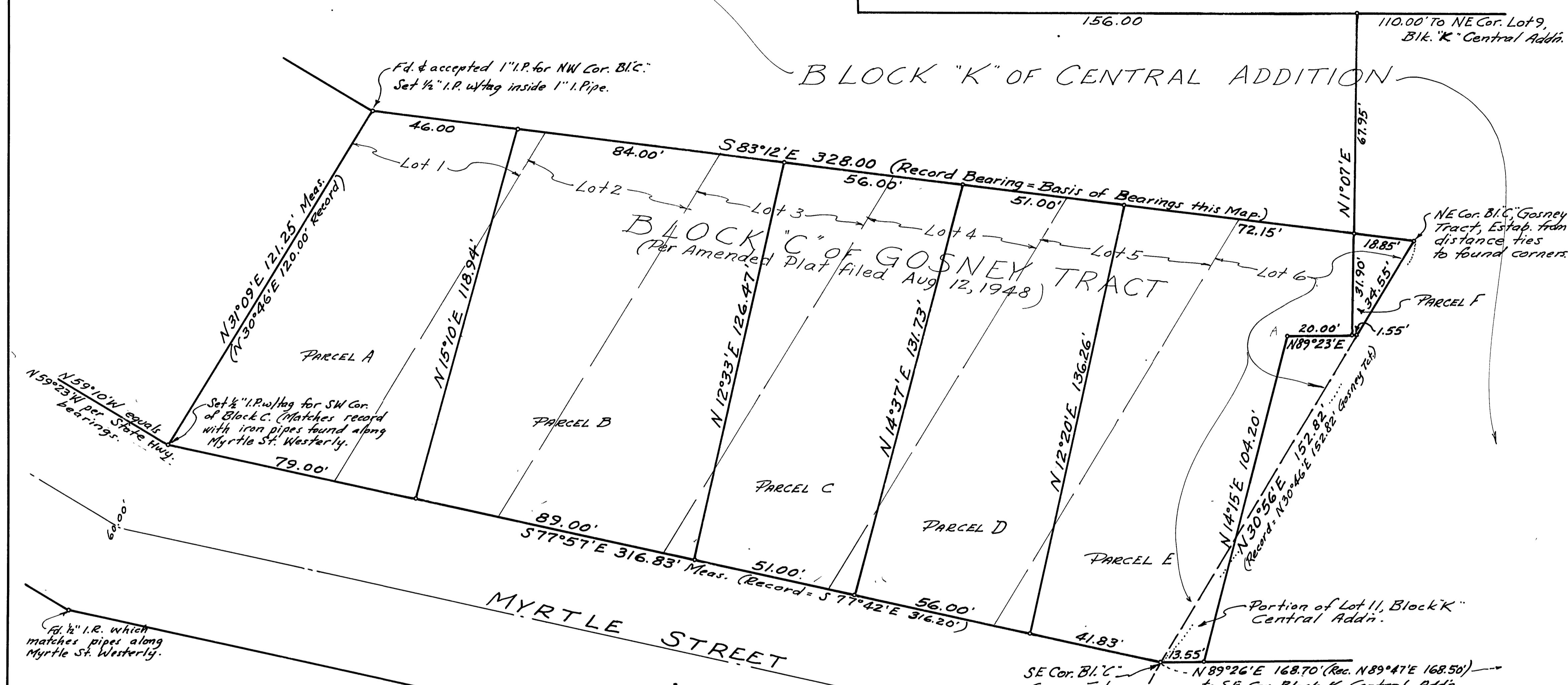


LAUREL LANE

BLOCK "K" OF CENTRAL ADDITION



CERTIFICATES:
 This map correctly represents a survey made by me or under my direction in conformance with the requirements of Ch 15, Div 3, Bus & Prof. Code at the request of Ralph Land, et al., in December, 1960.

A. J. Vandenberg
 A. J. VANDENBERG, R.C.E. 7567

This map has been examined for conformance with the requirements of Chap 15, Div 3, Bus & Prof. Code this 10th day of January, 1962

James F. Flanagan
 JAMES F. FLANAGAN, R.C.E. 292
 Plumas County Surveyor

FILED FOR RECORD this 10th day of January, 1962 at 3:30 P.M. in Book 2 of Rec. of Surveys at Page 74 at the request of A. J. Vandenberg.

Fee: \$5.00
 File # 2584
Ida Hogan Rowold
 Plumas County Recorder

NOTES & LEGEND:
 — Set 1/2" dia. iron pipe tagged "RCE 7567" unless otherwise noted
 BEARINGS shown are based on the Northerly line of Block C, Gosney Tract
 Where discrepancies were noted in bearings between Record values and field measurements, re-establishment of corners was controlled by lineal measurement to found existing corners.
 This Record of Survey is not a Sub-division as defined in Sec. 11535, Bus. & Prof. Code.



SCALE:
 1" = 20'

Set pipe for NE Cor. Lot 6, Bl. "D" Gosney Trct.

RECORD OF SURVEY
 LANDS OF RALPH LAND & OTHERS
 IN PORTIONS OF
GOSNEY TRACT & CENTRAL ADDITION
 TOWN OF CHESTER, PLUMAS COUNTY
 CALIFORNIA
 Survey by: A. J. VANDENBERG, Reg. Civil Engineer 7567