

RECORD OF SURVEY
 Section 14, Township 21 North; Range 9 East; M.D.B. & M.
 Scale 1" = 500'
 December 1961

SURVEYOR'S CERTIFICATE
 This map correctly represents a survey made by me or under my direction in conformance with the requirements of Chapter 15 of Division 3 of the Business and Professions Code at the request of A. Speckert in September, 1961.
 Albert H. DeVoe
 ALBERT H. DEVOE, LS 3079

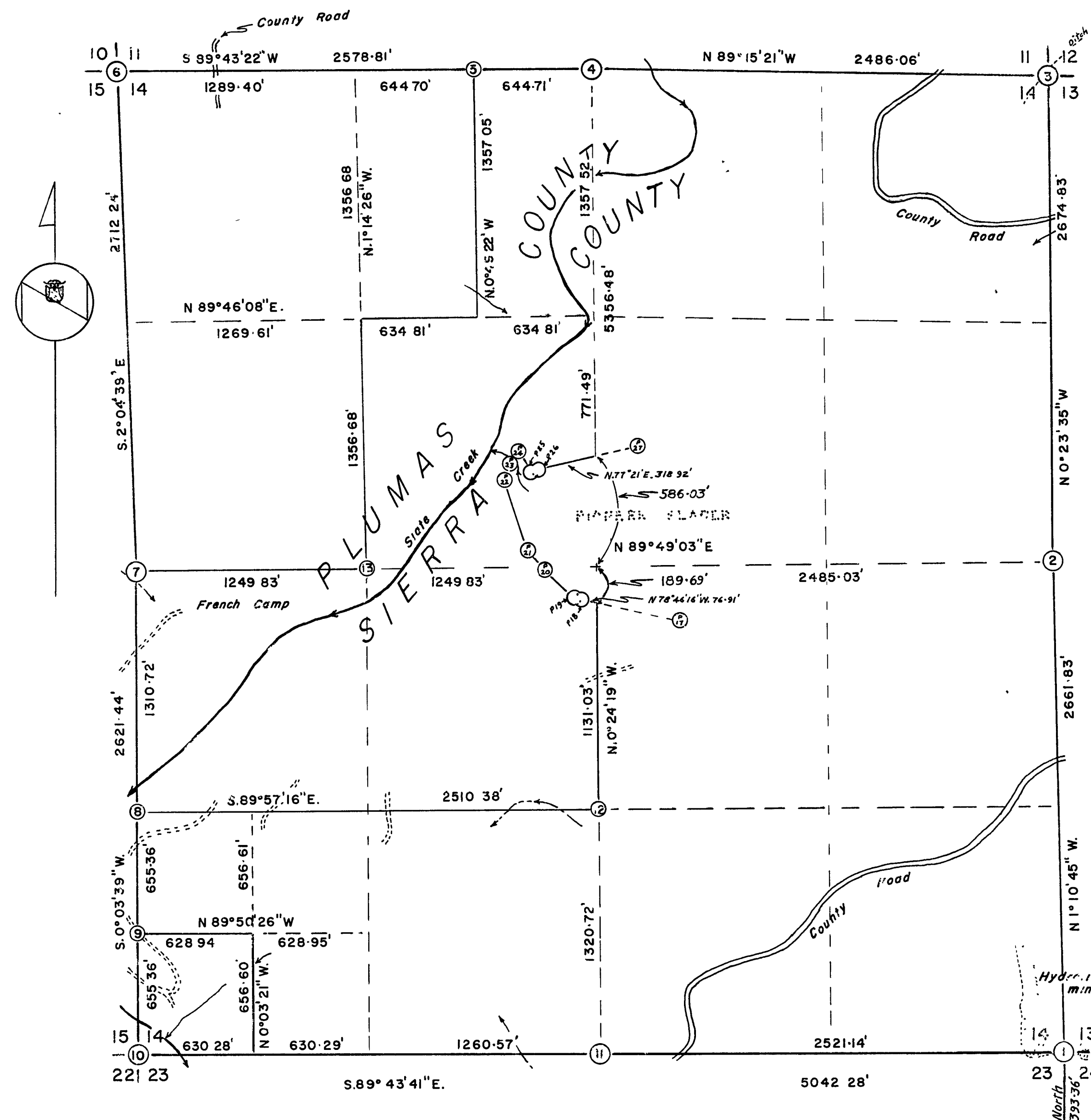
COUNTY SURVEYORS CERTIFICATE
 This map has been examined for conformance with the requirements of Chapter 15 of Division 3 of the Business and Professions Code this 21st day of February, 1962.
 James G. Flanagan
 COUNTY SURVEYOR

2803
 RECORDER'S CERTIFICATE
 Filed for record this 21st day of Feb., 1962, at 9:30 A.M. in Book 2 of R. of S. at page 75, at the request of A.H. DeVoe.
 Ida Hogan Jonnald
 COUNTY RECORDER

CORNER INFORMATION

- ① Section Corner 13,14,23,24 - Corner destroyed by Placer mining. Calculated position by retracing original tie to SW corner of Homestead Claim which is identical to Pioneer No. 8 - No monument set.
- ② E 1/4 - 12x10 Stone scribed 1/4" monumented by H.B. Budd in Mineral Survey 4215 BT is a 24" P. pine N3°E, 10.7 ft scribed 1/4" SXIII BT. New BTs: 15" W fir S.80°30'E, 31.2 ft scribed 1/4" S13 BT; 21" W fir S33°30'W, 5.2 ft. scribed 1/4" S14 BT.
- ③ Section Corner 11,12,13,14 - Set Brass cap in rock mound 30 ft east of old H₂O ditch. Original BT is an 18" S pine S.68°W 104.5 ft scribed S14 visible. New BTs: 18" W fir N31°30'W, 2 ft scribed S11 BT; 27" W fir N55°30'E 26 ft scribed S12 BT, 11" W fir S.50°E, 17.5 ft scribed S13 BT.
- ④ N 1/4 - Set Brass cap in old rock mound on rocky north slope. Original BT is a 40" D fir S30°W 34.3 ft scribed is visible. New BT 9" W fir S.54°E 26.7 ft scribed S14 BT.
- ⑤ E-W 1/64 Sec 11/14 - Set Brass cap in rock mound. New BT 16" S pine S11°45'W 17.4 ft scribed EW 1/64 BT.
- ⑥ Section Corner 10,11,14,15 - Set Brass cap in rock mound. Original BTs 58" W fir N45°E 89.1 ft face closed, 60" W fir S10°E 78.5 ft scribing visible. New BTs: 24" S pine N44°15'W 35 ft scribed S10 BT, 13.5" W fir N71°30'E 9.6 ft scribed S11 BT, 17.5" W fir S.32°45'E 25 ft scribed S14 BT, 20" W fir S.45°15'W, 26 ft scribed S15 BT.
- ⑦ W 1/4 - 12" B oak scribed 1/4" visible - Set Brass cap at base of oak. Original BT is a 16" I cedar N20°W 20.5 ft scribed is closed. New BTs: 14" D fir S71°15'E 23.7 ft scribed S14 BT; 12" D fir S.67°45'W, 26 ft. scribed S15 BT.
- ⑧ S1/16 Sec. 15/14 - Set Brass cap in old tailings. Build rock mound. New BTs: 16" D fir S.65°W 23 ft scribed S11/16 S15 BT; 4" D fir N.65°45'E, 13.8 ft scribed BT.
- ⑨ S-S1/64 Sec. 15/14 - Set Brass cap 6" under logging road. New BT: 17" D fir S.22°15'W, 31.8 ft. scribed S51/64 S15 BT.
- ⑩ Section Corner 14,15,22,23 - 2" Steel cap on pipe in rock mound. Original BT is a stump S.25°E, 25 ft scribing visible. New BTs: 11" D fir S.45°15'W, 43 ft scribed S22 BT, 13" W fir N.51°15'W, 24.6 ft. scribed S15 BT; 8" D fir N.32°30'E, 17.4 ft. scribed S14 BT; 11" S pine S.75°15'E, 34 ft. scribed S23 BT.
- ⑪ S1/4 - Corner searched for, but not found. Computed by single proportion - Not remonumented.
- ⑫ CS 1/16 - Set Brass cap in small rock mound. New BTs: 9" W fir East 11.9 ft; 10" W fir S.20°30'E, 19.1 ft. Both brass scribed CS 1/16 BT.
- ⑬ CW 1/16 - Set Brass cap in rock mound on steep rocky slope 15' east of old H₂O ditch. New BT is a 16" D fir S17°30'W, 28.3 ft. scribed CW 1/16 BT.
- ⑭ Pioneer 7 - Rock mound BTs: 40" I cedar stump N30°09'E, 48.7 ft; 39" I cedar S.59°26'W, 53.5 ft. Hendel's mark \boxtimes on tree.
- ⑮ Pioneer 8 - Large boulder and rock mound. Original BTs: 36" P. pine stump N.69°44'E, 63.4 ft. bottom of old face visible. Dead 48" I cedar S.47°46'W, 58 ft. part of old face visible; 40" I cedar S.31°30'E, 16 ft. Hendel's mark \boxtimes on tree. New BTs: 18" S pine S.4°30'W, 16.5 ft; 9" W fir N.61°30'W, 11 ft. both trees scribed P#8. Highland Mary Claim corner, a rock mound, bears S.48°45'W, 25 ft.
- ⑯ Pioneer 17 - Rock mound - No BTs.
- ⑰ Pioneer 18 - Rock mound - Set Brass cap. Old BT a 23" W fir S.53°30'E, 23.1 ft scar closed. New BT is a 12" W fir N.64°15'E, 35.4 ft. scribed P18 BT.
- ⑱ Pioneer 19 - Rock mound - Set Brass cap. Old BT a 12" W fir S.12°W 11.2 ft scar closed. New BT is a 13" W fir S.72°15'E 11.4 ft scribed P19 BT.
- ⑳ Pioneer 20 - Rock mound - Set Brass cap. Old BT a 40" D fir S.65°45'W 3.3 ft scar closed. New BT is an 8" W fir S.56°45'E 20.6 ft. scribed P20 BT.
- ㉑ Pioneer 21 - Rock mound - Set Brass cap. Old BTs: 16" W fir S.20°22'W, 6.9 ft. scar closed, 10" W fir windthrow S.38°48'E, 16.9 ft. scribing visible. New BT is a 6" D fir N.32°E, 12.6 ft. scribed P21 BT.
- ㉒ Pioneer 22 - Rock mound - Set Brass cap. Old BT is a 40" Pine snag in very poor condition S.6°45'E, 41.1 ft. Hendel's mark \boxtimes is legible. New BT. 14" D fir S.23°15'E, 36.8 ft. scribed P22 BT.
- ㉓ Pioneer 23 - Old rock mound on apex of rock ridge. Original BT is gone.
- ㉔ Pioneer 24 - Old tailings. Rock mound gone. Old BT is a 32" D. fir snag in very poor condition N.73°18'W, 3.7 ft. Hendel's mark \boxtimes is legible.
- ㉕ Pioneer 25 - Old rock mound - Original BT gone. New BT is a 7" W fir N.83°W, 9.4 ft scribed P25 BT.
- ㉖ Pioneer 26 - Old rock mound - Original BT is a 20" S pine S.19°59'E, 7.5 ft. scar closed. New BT is a 13" D. fir N.76°E, 10 ft scribed P26 BT.
- ㉗ Pioneer 27 - Old rock mound - No BTs.

NOTE
 Survey information regarding original Pioneer Corners 17 through 27 were obtained from the Charles W Hendel Collection in the California Section of the State Library at Sacramento.



Station	Bearing	Distance Feet
P18	N.77°46'00"W	44.86
P19	N.47°28'14"W	223.12
P20	N.42°42'40"W	140.23
P21	N.18°30'18"W	400.68
P22	N.18°18'00"E	83.82
P23	N.36°32'00"E	84.48
P24	S.29°17'00"E	128.04
P25	N.76°46'00"E	51.48
P26		

LEGEND

 County road
 Logging road
 Ridge
 Bearings from Solar observation